

Dracula

Tone poem based on the Bram Stoker story

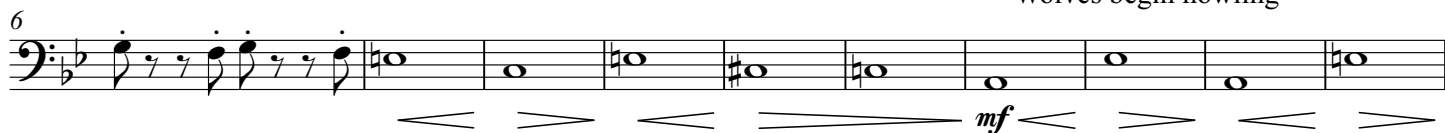
Tuba in B \flat BC

Kelly BENNETTE (ASCAP)

$\text{♩} = 120$ Jon Harker goes to Transylvania



A Wolves begin howling



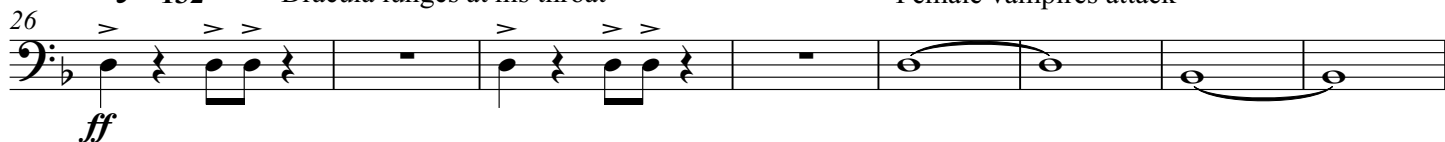
molto rit.

$\text{♩} = 60$ Harker meets Dracula



B $\text{♩} = 132$ Dracula lunges at his throat

Female vampires attack

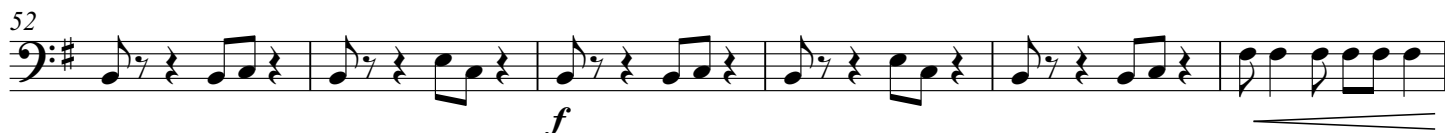
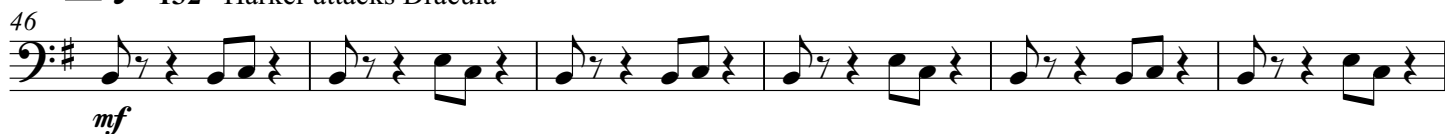


C $\text{♩} = 60$ Realization about Dracula

Cue S. Bass



D $\text{♩} = 132$ Harker attacks Dracula



E Dracula traps Harker

molto rit.



F $\text{♩} = 80$ Cue Bassoon 2 Mina visits Lucy



Tuba in B♭ BC

G

Lucy found with bite marks

72

12

p *p*

Lucy becomes ill

78

Musical notation for the bass line of 'The Rose Tree'. The key signature is one flat (B-flat). The melody consists of the following notes: G2 (quarter), A2 (quarter), Bb2 (quarter), A2 (quarter), G2 (quarter), F2 (quarter), E2 (quarter), D2 (quarter), C2 (half). The piece ends with a double bar line and a repeat sign.

H

♩ = 120 Mina leaves for Transylvania

87

[illegible]**I**

molto rit. Lucy dies

92

[illegible]

J

♩ = 132 Children are attacked

102

[illegible]

109

Cue S. Bass

Jon and Mina return to England

109

mp *ff*

K

♩ = 60 Lucy is a vampire

119

Musical score for the bass line of 'The Rose Tree'. The key signature is one flat (B-flat). The melody starts with a quarter note G2, followed by eighth notes F2 and E2, then a quarter note D2. This is followed by a half note C2, then a quarter note B1. A fermata is placed over the B1 note. The next measure contains a whole note A1. The final measure is a whole note G1, marked with a piano (*p*) dynamic. The score is written on a single staff with a bass clef.

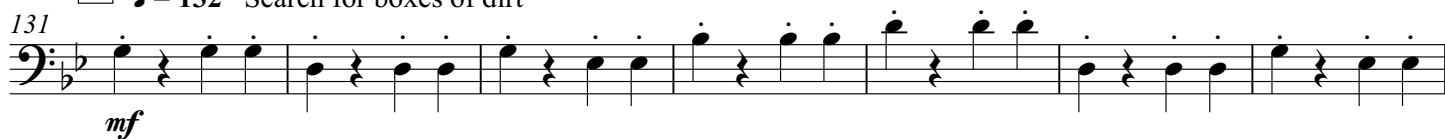
Lucy is staked in the heart

127

127 

Tuba in B \flat BC

L $\text{♩} = 132$ Search for boxes of dirt



M



N Dirt boxes destroyed



molto rit.

$\text{♩} = 80$

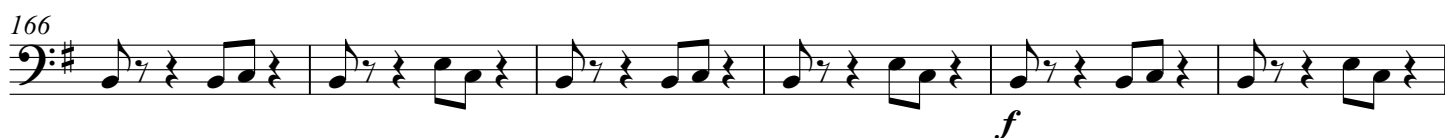
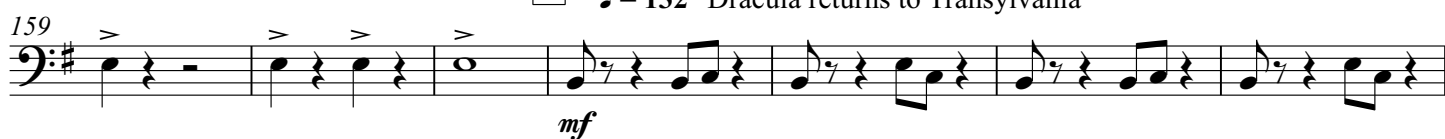
O *poco accel.*

Mina found drinking blood

$\text{♩} = 96$



P $\text{♩} = 132$ Dracula returns to Transylvania



Jon and the doctors pursue



Q Dracula is staked in the heart

Dracula crumbles to dust

