

Dracula

Tone poem based on the Bram Stoker story

Tuba in Bb

Kelly BENNETTE (ASCAP)

♩ = 120 Jon Harker goes to Transylvania

p

6 **A** Wolves begin howling

mf

16 *molto rit.* // ♩ = 60 Harker meets Dracula

p

26 **B** ♩ = 132 Dracula lunges at his throat Female vampires attack

ff

34

42 **C** ♩ = 60 Realization about Dracula
Cue S. Bass

p

46 **D** ♩ = 132 Harker attacks Dracula

mf

52

58 **E** Dracula traps Harker *molto rit.*

ff *mf*

65 ♩ = 80 **F** Cue Bassoon 2 Mina visits Lucy

mp

2

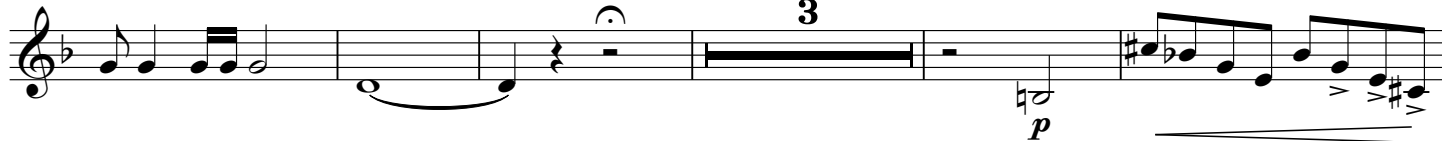
2

Tuba in B \flat 72 **G** Lucy found with bite marks

78 Lucy becomes ill

87 **H** $\text{♩} = 120$ Mina leaves for Transylvania92 **I** *molto rit.* Lucy dies102 **J** $\text{♩} = 132$ Children are attacked

109 Cue S. Bass Jon and Mina return to England

119 **K** $\text{♩} = 60$ Lucy is a vampire

127 Lucy is staked in the heart



Tuba in B \flat

131 **L** $\text{♩} = 132$ Search for boxes of dirt



138 **M**



145 **N** Dirt boxes destroyed



152 **O** *molto rit.* $\text{♩} = 80$ *poco accel.* Mina found drinking blood $\text{♩} = 96$



159 **P** $\text{♩} = 132$ Dracula returns to Transylvania



172 Jon and the doctors pursue



182 **Q** Dracula is staked in the heart

Dracula crumbles to dust

