

Dracula

Tone poem based on the Bram Stoker story

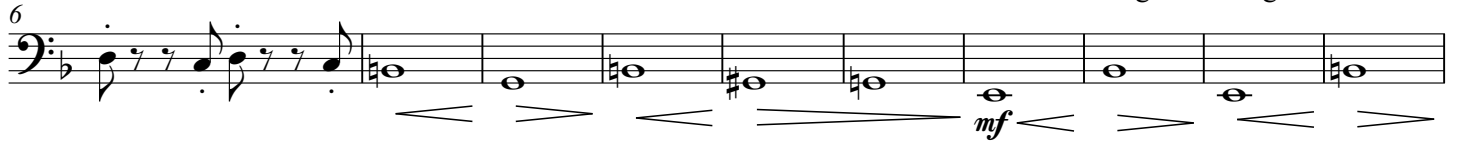
Tuba in E \flat BC

Kelly BENNETTE (ASCAP)

$\text{♩} = 120$ Jon Harker goes to Transylvania

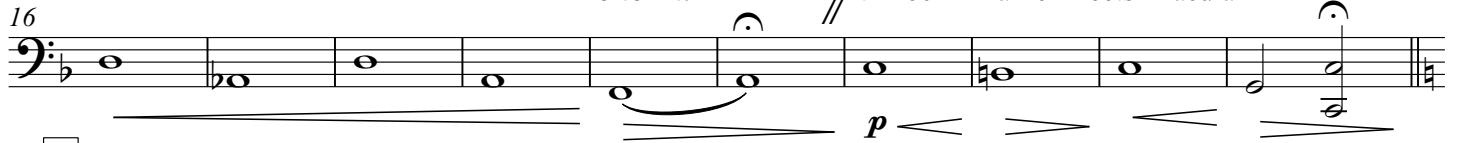


A Wolves begin howling



molto rit.

$\text{♩} = 60$ Harker meets Dracula



B $\text{♩} = 132$ Dracula lunges at his throat

Female vampires attack



C $\text{♩} = 60$ Realization about Dracula
Cue S. Bass



D $\text{♩} = 132$ Harker attacks Dracula



E Dracula traps Harker

molto rit.



F $\text{♩} = 80$ Cue Bassoon 2 Mina visits Lucy



Lucy found with bite marks

The bass line of 'The Rose Tree' is written in G major (one sharp) and 2/4 time. It begins with a half note G2, followed by a half note A2, and then a whole note B2. After a double bar line, it continues with a half note G2, a half note F#2, a quarter note E2, a quarter note D2, a half note C2, a half note B1, a quarter note A1, a quarter note G1, a half note F#1, a half note E1, and finally a whole note D1. The piece concludes with a double bar line. Dynamics include piano (p) at the beginning and a crescendo leading to the final note.

Lucy becomes ill

[illegible]

♩ = 120 Mina leaves for Transylvania

The bass line of 'The Rose Tree' is written in 3/4 time and begins with a piano (*p*) dynamic. The melody consists of eighth and sixteenth notes, with some notes beamed together. The key signature has one flat (B-flat). The score includes two fermatas over the final two measures.

molto rit. Lucy dies

Musical notation for the bass line of 'The Rose Tree'. The key signature is one flat (B-flat). The melody consists of eighth and quarter notes, with some notes beamed together. The lyrics 'The Rose Tree' are written below the notes.

♩ = 132 Children are attacked

The musical score for the bass line of 'The Rose Tree' is written on a single staff with a bass clef and a key signature of one flat (B-flat). The tempo is marked 'Allegretto' and the time signature is 4/4. The score consists of 16 measures. The first four measures are in 4/4 time, followed by a double bar line and a repeat sign. The next four measures are in 7/8 time, followed by a double bar line and a repeat sign. The final eight measures are in 4/4 time. The dynamics are marked as *ff* (fortissimo) at the beginning of the 7/8 section and *mp* (mezzo-piano) at the beginning of the final 4/4 section. The melody is simple and consists of eighth and quarter notes.

Cue S. Bass

Jon and Mina return to England

The bass line of 'The Rose Tree' is written on a single staff. It begins with a treble clef and a key signature of one flat (B-flat). The melody starts with a half note G2, followed by a half note F2, then a quarter note E2, and a quarter note D2. This is followed by a half note C2, then a half note B1, and a half note A1. The melody then rises to a half note G1, followed by a half note F1, and a half note E1. The melody ends with a half note D1, followed by a half note C1, and a half note B0. The dynamics are marked *mp* (mezzo-piano) at the beginning and *ff* (fortissimo) at the end.

♩ = 60
3

Lucy is a vampire

Lucy is staked in the heart

Tuba in E \flat BC

L $\text{♩} = 132$ Search for boxes of dirt



M



N Dirt boxes destroyed



molto rit.

$\text{♩} = 80$

O *poco accel.* Mina found drinking blood $\text{♩} = 96$



P $\text{♩} = 132$ Dracula returns to Transylvania



Jon and the doctors pursue



Q Dracula is staked in the heart

Dracula crumbles to dust

