

Dracula

Tone poem based on the Bram Stoker story

Tuba in Eb

Kelly BENNETTE (ASCAP)

$\text{♩} = 120$ Jon Harker goes to Transylvania

A Wolves begin howling

molto rit. $\text{♩} = 60$ Harker meets Dracula

B $\text{♩} = 132$ Dracula lunges at his throat Female vampires attack

C $\text{♩} = 60$ Realization about Dracula
Cue S. Bass

D $\text{♩} = 132$ Harker attacks Dracula

E Dracula traps Harker *molto rit.*

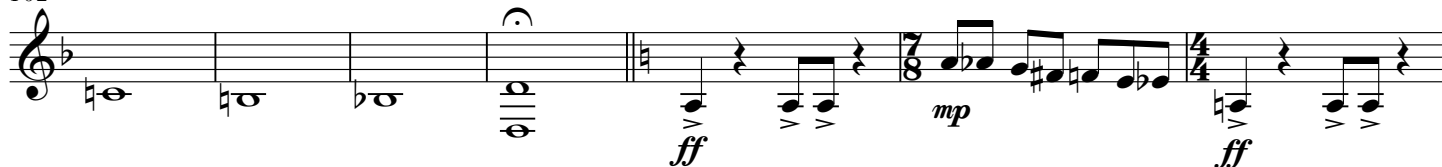
F $\text{♩} = 80$ Cue Bassoon 2 Mina visits Lucy

2

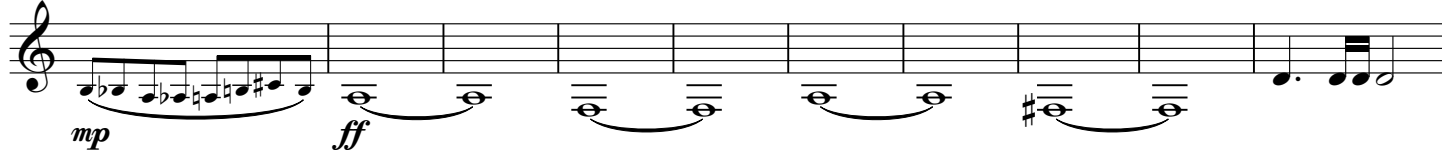
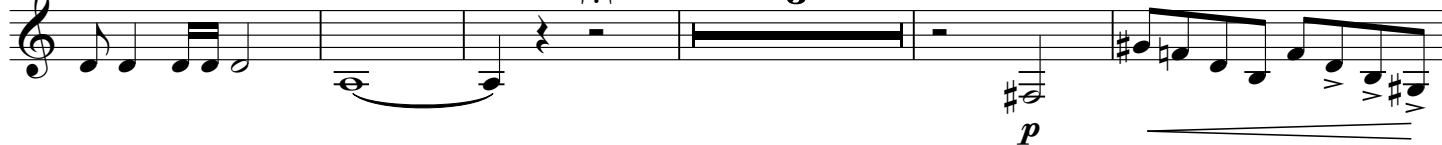
Tuba in Eb

72 **G** Lucy found with bite marks

78 Lucy becomes ill

87 **H** $\text{♩} = 120$ Mina leaves for Transylvania92 **I** *molto rit.* Lucy dies102 **J** $\text{♩} = 132$ Children are attacked

109 Cue S. Bass Jon and Mina return to England

119 **K** $\text{♩} = 60$ Lucy is a vampire

127 Lucy is staked in the heart



Tuba in E \flat

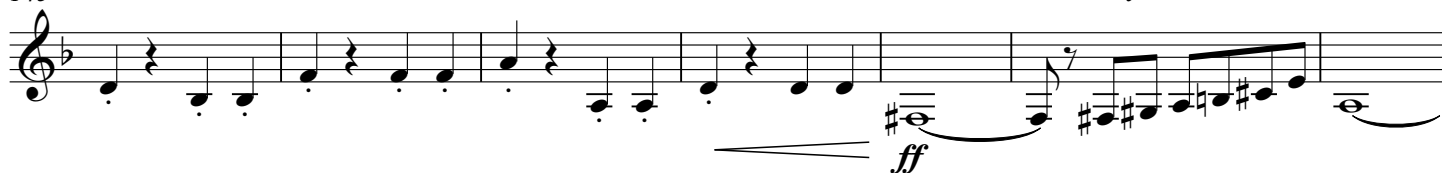
131 **L** $\text{♩} = 132$ Search for boxes of dirt



138 **M**



145 **N** Dirt boxes destroyed



152 **O** *molto rit.* $\text{♩} = 80$ *poco accel.* Mina found drinking blood $\text{♩} = 96$



159 **P** $\text{♩} = 132$ Dracula returns to Transylvania



172 Jon and the doctors pursue



182 **Q** Dracula is staked in the heart

Dracula crumbles to dust

