

Dracula

Tone poem based on the Bram Stoker story

1st Trombone in Bb

Kelly BENNETTE (ASCAP)

♩ = 120 Jon Harker goes to Transylvania

p

8 **A** Wolves begin howling

mf

20 **B** *molto rit.* ♩ = 60 Harker meets Dracula *p* *ff* ♩ = 132 Dracula lunges at his throat

30 Female vampires attack

39 **C** ♩ = 60 Realization about Dracula **D** ♩ = 132 Harker attacks Dracula *mf*

48

54 **E** Dracula traps Harker *f* *ff*

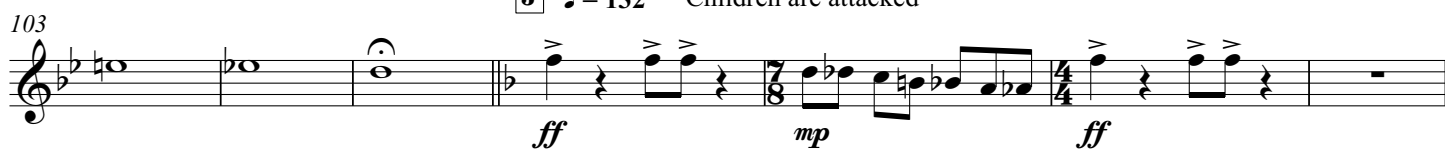
62 **F** *molto rit.* ♩ = 80 Mina visits Lucy *mf* *mp* *p*

74 **G** Lucy found with bite marks *p*

83 **H** ♩ = 120 Lucy becomes ill *p* *4* Mina leaves for Transylvania

92 **I** *molto rit.* Lucy dies

1st Trombone in B♭
J ♩ = 132 Children are attacked



110 Jon and Mina return to England

