

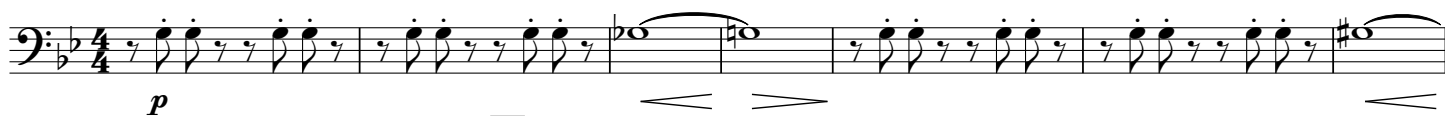
# Dracula

Tone poem based on the Bram Stoker story

3rd Trombone in B♭ BC

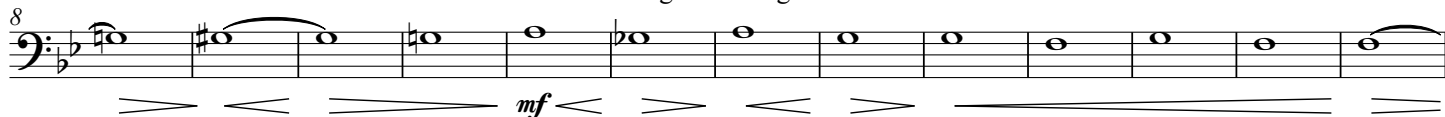
Kelly BENNETTE (ASCAP)

♩ = 120 Jon Harker goes to Transylvania



**A** Wolves begin howling

**molto rit.**

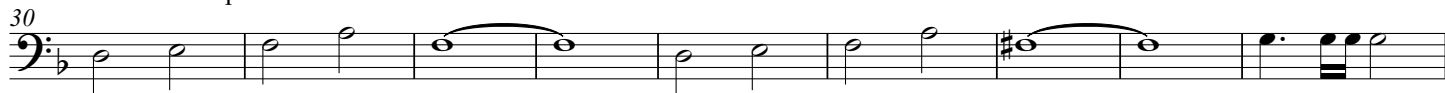


♩ = 60 Harker meets Dracula

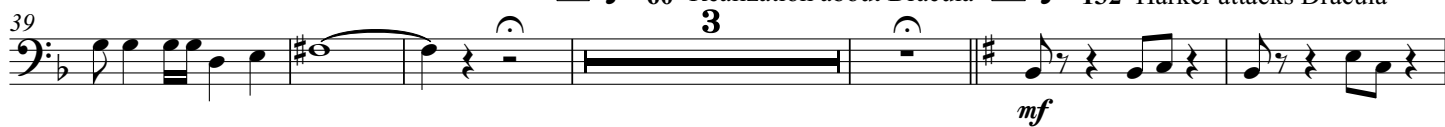
**B** ♩ = 132 Dracula lunges at his throat



Female vampires attack



**C** ♩ = 60 Realization about Dracula **D** ♩ = 132 Harker attacks Dracula



**E** Dracula traps Harker

**molto rit.**



♩ = 80 **F** Mina visits Lucy

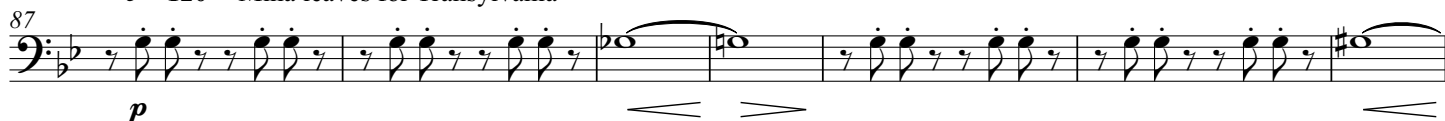
**G** Lucy found with bite marks



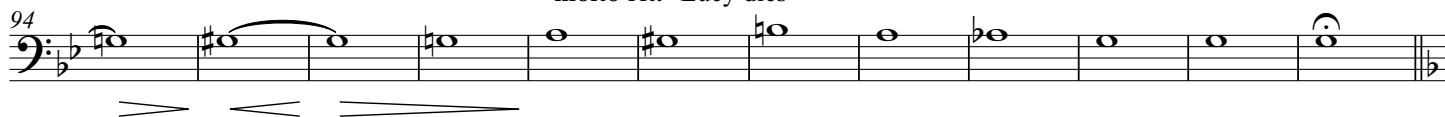
Lucy becomes ill



**H** ♩ = 120 Mina leaves for Transylvania



**I** **molto rit.** Lucy dies



**J**  $\text{♩} = 132$  Children are attacked  
Jon and Mina return to England

106 *ff* *mp* *ff*

114

**K**  $\text{♩} = 60$  Lucy is a vampire  
Lucy is staked in the heart

122 *p* *ff* *mp*

**L**  $\text{♩} = 132$  Search for boxes of dirt

131 *mf*

136

**M**

141

**N** Dirt boxes destroyed *molto rit.*

146 *ff*

$\text{♩} = 80$  **O** Mina found drinking blood *poco accel.*  $\text{♩} = 96$

153 *mp* *ff*

**P**  $\text{♩} = 132$  Dracula returns to Transylvania

162 *mf*

168 *f*

Jon and the doctors pursue

174 *ff* *mf* *ff*

**Q** Dracula is staked in the heart  
Dracula crumbles to dust

182