

B \flat Bass

DON JUAN

Symphonic poem

Richard STRAUSS Op. 20

Arranged by José SCHYNS

Allegro molto con brio $\text{♩} = 84$

1 *ff* 3 *ff*

8 1

15 2 *mf* *mf* *f*

22 *ff* 3 3 3 3

28 3 3 3 3 *fff*

34 *f* *ff* 3

40 4 3 3 3 3 2 *pp sub.*

46 **Tranquillo** *ff* *p* 5 **molto vivo** *f* 3

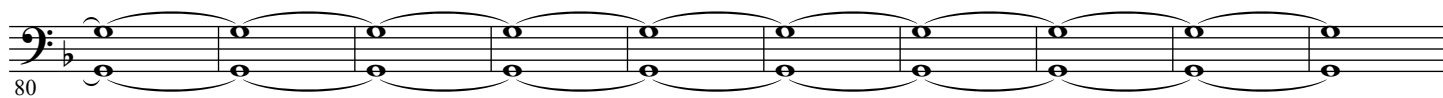
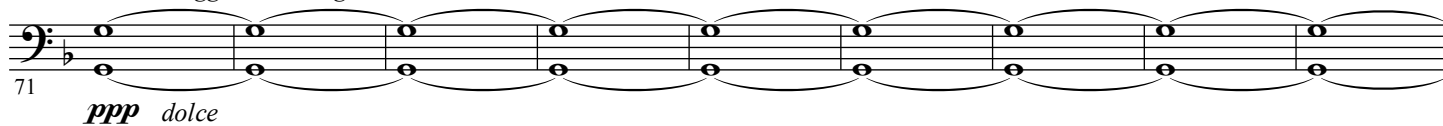
53 4 *p* *cresc.*

62 6 *ff* 3 2 4 **calando poco**

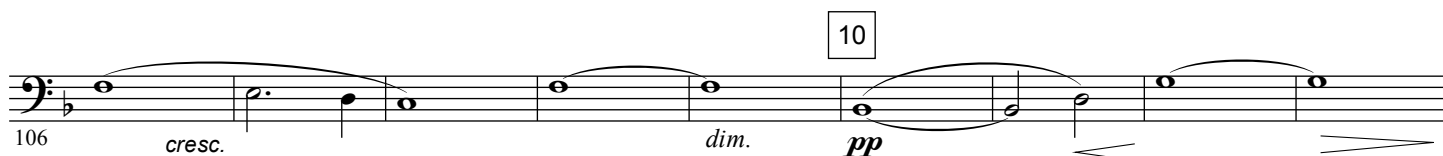
2.

- B \flat Bass -

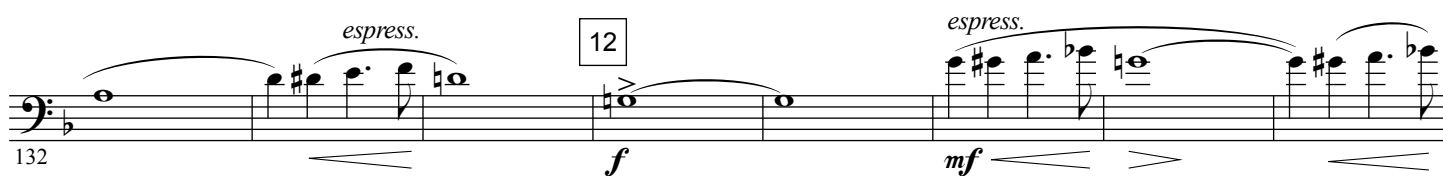
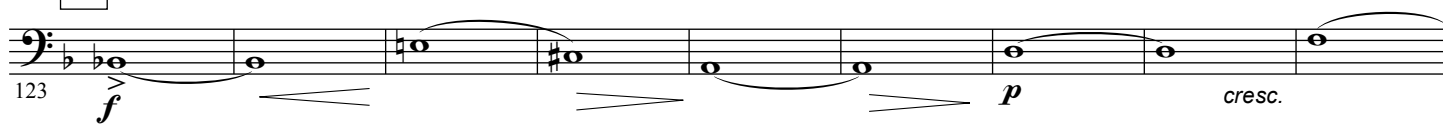
7

Tranquillo*div. stagger breathing*

8

Tranquillo**poco a poco più vivente**

11



13

un poco più lento**poco calando****a tempo, vivo** $\text{♩} = 76$

one cue Contrabassoon



poco sostenuto
All Play
156 *mf* *dim.* *pp* *p* *cresc.*

calando **14** **tempo vivo e poco stringendo**
3 div. 3

a tempo, molto vivace $\text{♩} = 84$
166 *f* *cresc.* *ff* *f*

15

173

16
181

188

poco calando **17** **a tempo** $\text{♩} = 92$
194 *f* *dim.* *pp*

poco calando **18** **a tempo**
202 *pp* *p* *f*

one cue Contrabassoon All Play

19
212 *pp*

one

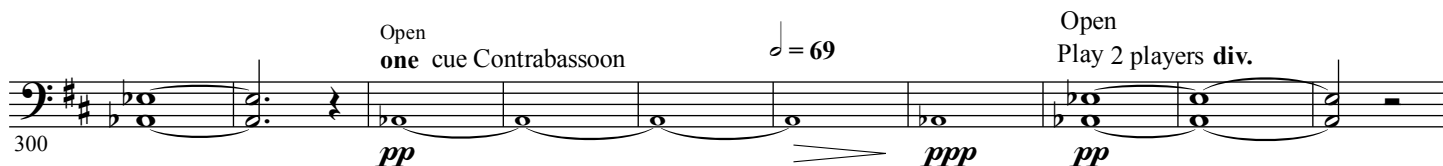
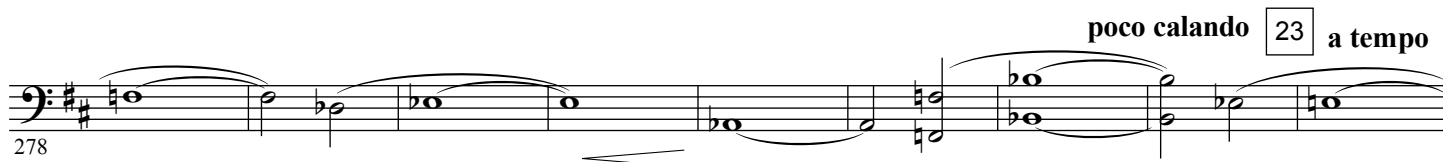
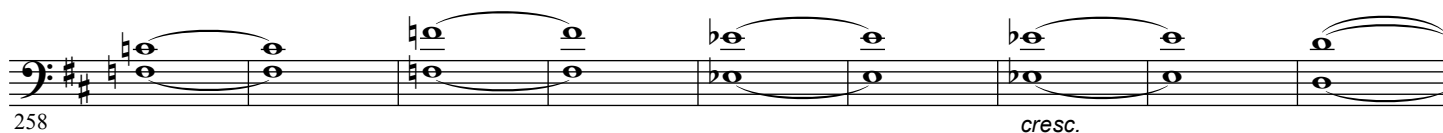
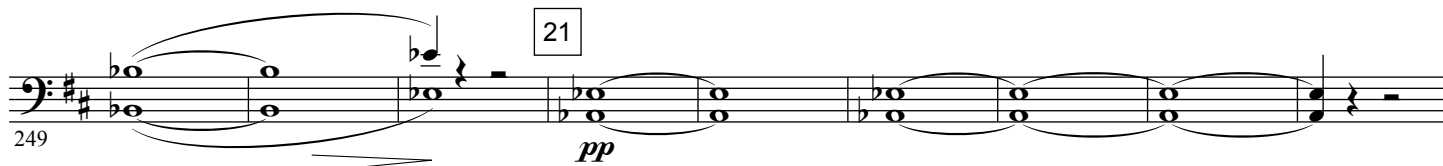
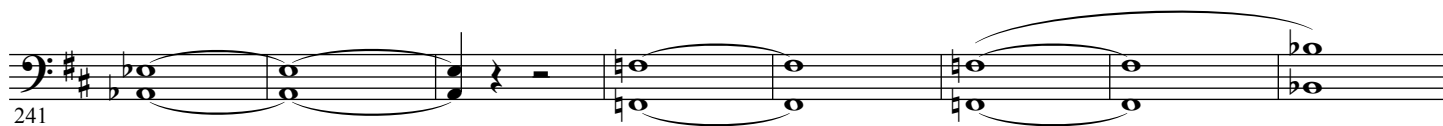
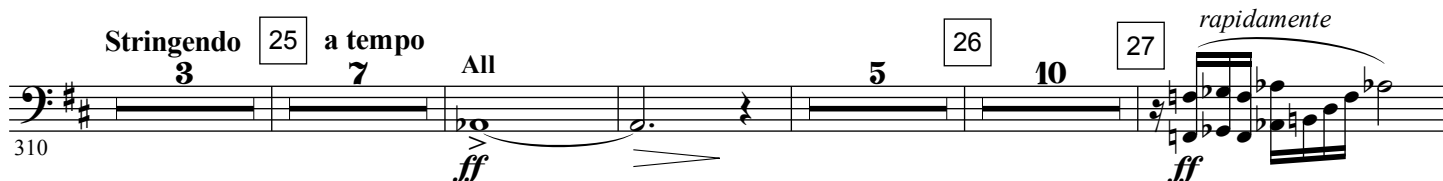
poco a poco più tranquillo **poco rit.**
222 *pp*

4.

- B, Bass -

20 a tempo ma tranquillo $\text{♩} = 76$

2 players div. Muted

Open
one cue Contrabassoon $\text{♩} = 69$ Open
Play 2 players div.

343 *ff espress.* **Stringendo**

28 **a tempo, giocoso** $\text{♩} = 92$ 29 11 *mf* *p* *mf* *f*

30 379 *ff* 3 2 3 3 3 3

31 **Vivo** 32 386 *ff*

394 *f* 3 3 *cresc.*

33 402 *f* *marcato* *cresc.* 34 *ff*

410 *mf* *dim.* *mf* **poco più agitato**

35 *marc.* *cresc.* 417 3 3 3 3 **sempre molto agitato** $\text{♩} = 63$ *fff*

36 *stagger breathing* 424 *ff* *dim.* *pp*

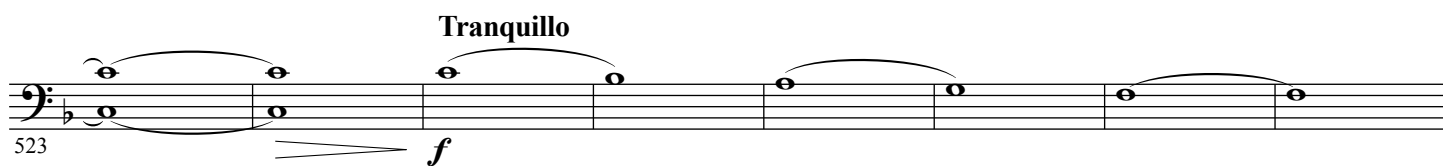
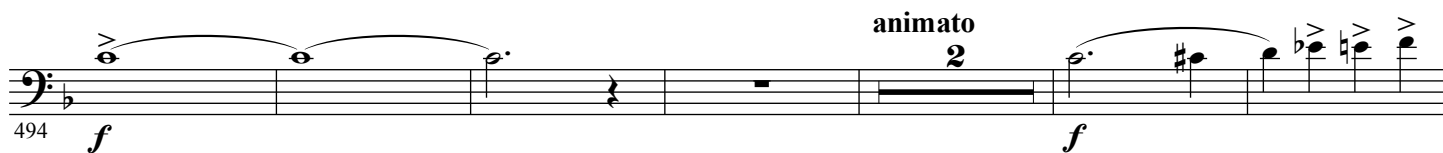
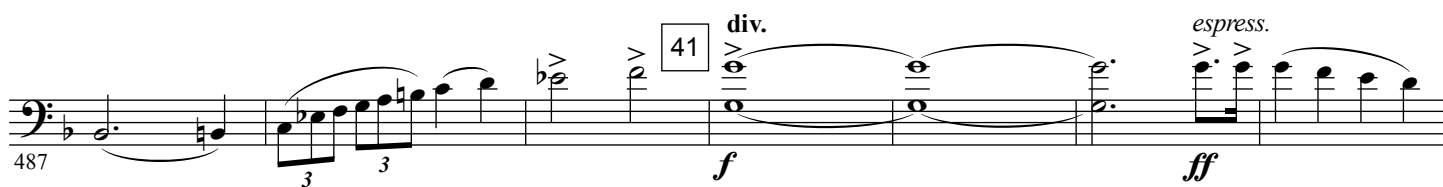
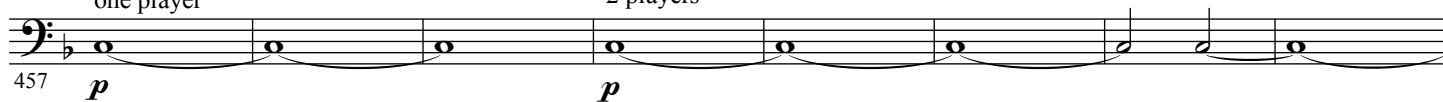
poco a poco calando 37 433

un poco agitato 38 **molto tranquillo** $\text{♩} = 72$ 9 441

39 a tempo primo

one player

2 players



539

animato

46

ff

547

ff

espress.

poco a poco più animato

dim.

f

cresc.

553

47

ff

560

48

f

ff

3

567

Più animato

3

3

Stringendo

f

cresc.

573

49

Più stringendo

580

longa

50

Tempo primo, poco a poco più lento

two players

586

pp

593

51

sempre più lento

two players cue String Bass

pp

600

pp