

# E♭ Bass

# DON JUAN

Symphonic poem

Richard STRAUSS Op. 20

Arranged by José SCHYNS

Allegro molto con brio  $\text{♩} = 84$

1 *ff*

8

15 *mf* *mf* *f*

22 *ff* *ff*

28 *fff*

34 *f* *ff*

40 *pp sub.*

46 *ff* *p*

53 *p* *cresc.*

62 *ff*

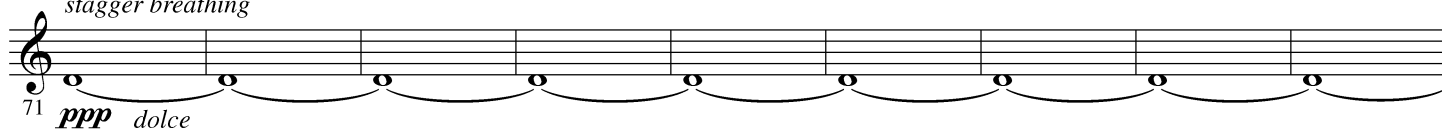
1 2 3 4

Tranquillo

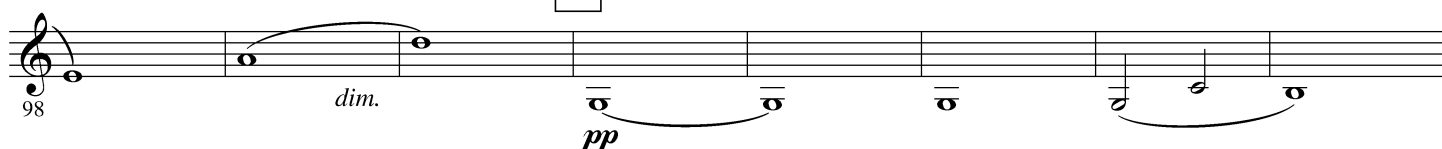
5 molto vivo

6 calando poco

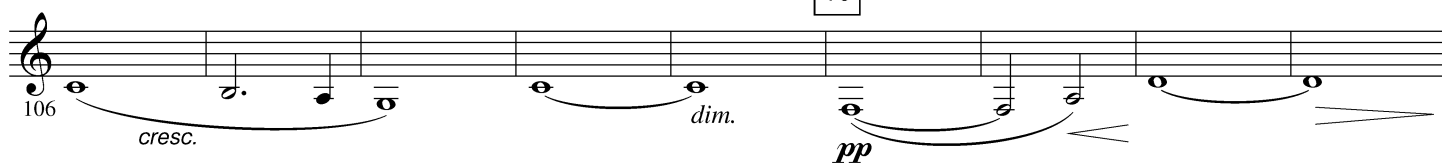
2.

- E $\flat$  Bass -7 **Tranquillo***stagger breathing*8 **Tranquillo**

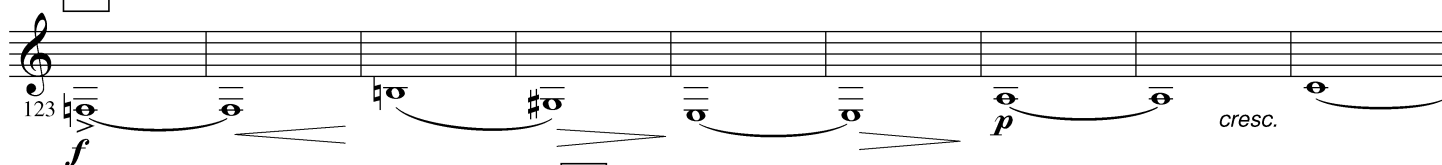
9



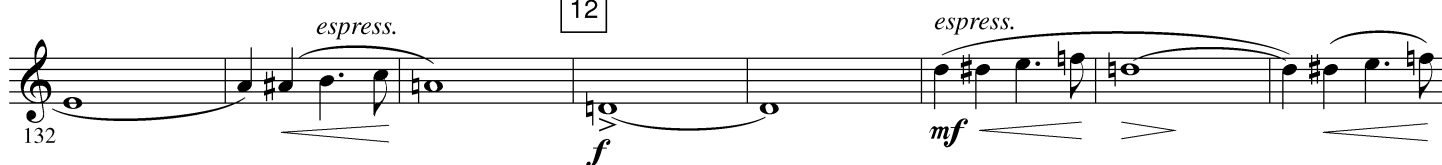
10

**poco a poco più vivente**

11



12

**molto appassionato e sempre un poco stringendo**13 **un poco più lento****poco calando****a tempo, vivo**  $\text{♩} = 76$   
one cue Contrabassoon

**poco sostenuto**  
All Play

**calando**

**14** **tempo vivo e poco stringendo**

156 *mf* *dim.* *pp* *p* *cresc.*

**a tempo, molto vivace**  $\text{♩} = 84$

**15**

166 *f* *cresc.* *ff* *f*

173

**16**

181

188

**poco calando**

**17** **a tempo**  $\text{♩} = 92$

194 *f* *dim.* *pp*

**poco calando**

**18** **a tempo**  
one cue Contrabassoon All Play

202 *pp* *p* *f*

**19**

212 *pp*

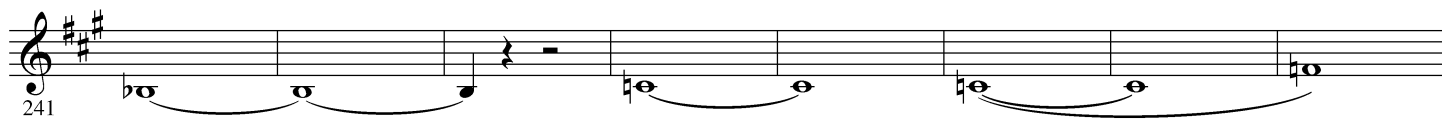
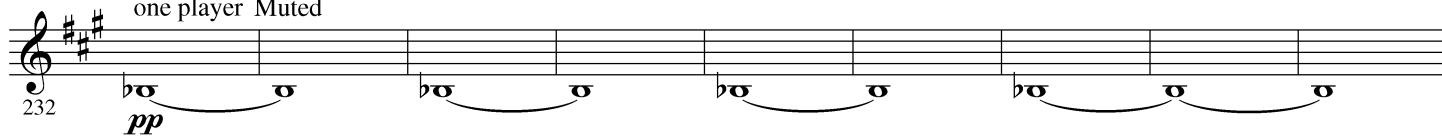
**poco a poco più tranquillo**

**poco rit.**

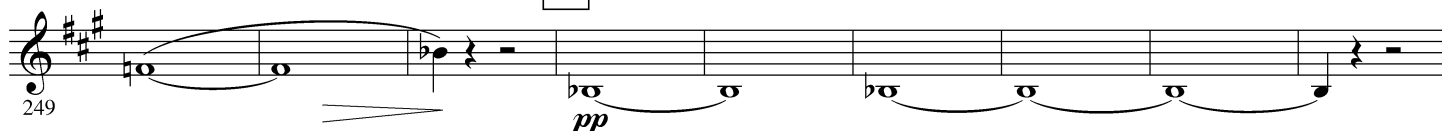
222 *pp*

20 a tempo ma tranquillo  $\text{♩} = 76$ 

one player Muted



21



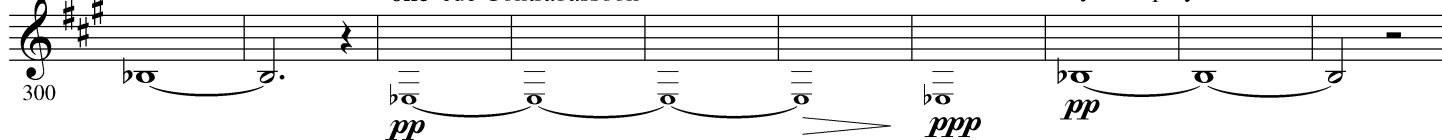
22



poco calando 23 a tempo



24 molto tranquillo

Open  
one cue Contrabassoon $\text{♩} = 69$ Open  
Play one player

Stringendo 25 a tempo

3

7

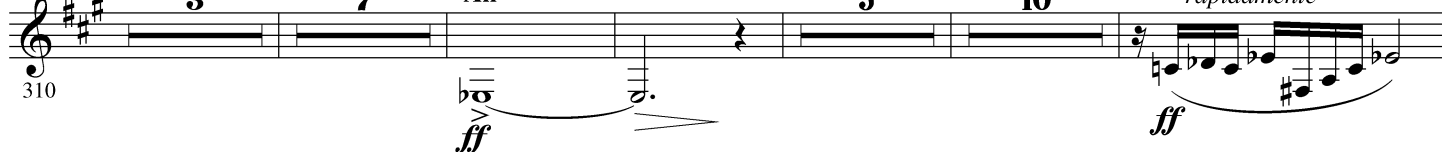
All

5

10

26

27

*rapidamente*

343 *ff* *espress.* **Stringendo**

351 *mf* **28** *a tempo, giocoso*  $\text{♩} = 92$  **11** **29** **11** *mf* *f*

379 *ff* **30** **2** **3** **3** **3** **3**

386 *ff* **31** *Vivo* **32**

394 *f* **3** *cresc.*

402 *f* **33** *marcato* *cresc.* **34** *ff*

410 *mf* *dim.* *mf* **poco più agitato**

417 *cresc.* **35** *marc.* **3** **3** **3** **3** *ff* **sempre molto agitato**  $\text{♩} = 63$

424 *ff* *dim.* **36** *stagger breathing* *pp*

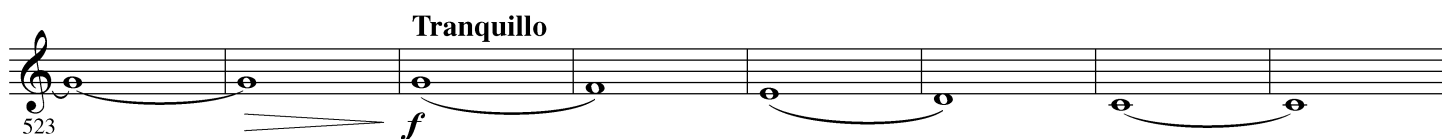
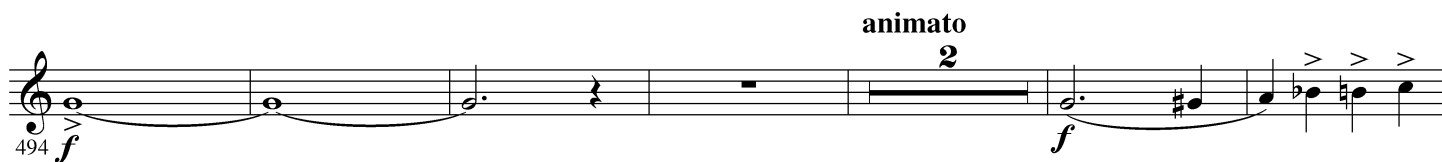
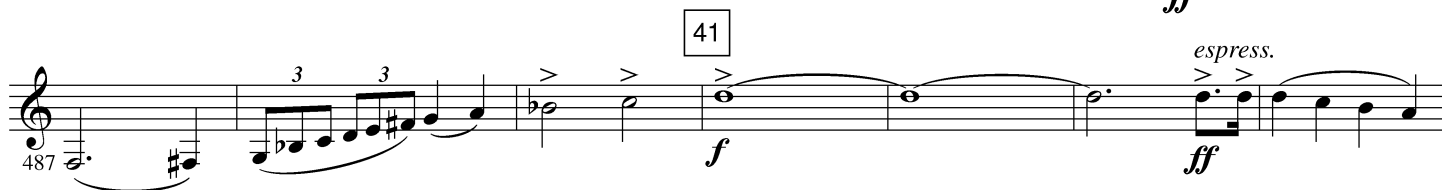
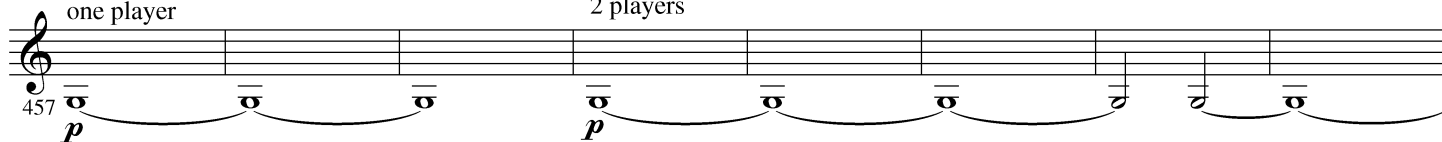
433 **poco a poco calando** **37**

441 **un poco agitato** **38** *molto tranquillo*  $\text{♩} = 72$  **9**

## 39 a tempo primo

one player

2 players



## Tranquillo



animato 46

539

*ff*

Detailed description: Musical staff for E<sub>2</sub> Bass, measures 539-546. It begins with a treble clef and a key signature of one sharp (F#). The staff contains a series of half notes and quarter notes, mostly in the lower register. A double bar line is present after measure 542. The dynamic *ff* is marked at the end of the staff.

*espress.* poco a poco più animato

547

*ff* *dim.* *f* *cresc.*

Detailed description: Musical staff for E<sub>2</sub> Bass, measures 547-552. It features triplet markings over groups of three notes. The dynamics *ff*, *dim.*, *f*, and *cresc.* are indicated. A double bar line is present after measure 550.

47

553

*ff*

Detailed description: Musical staff for E<sub>2</sub> Bass, measures 553-560. It contains half notes and quarter notes. The dynamic *ff* is marked. A double bar line is present after measure 557.

48

560

*f* *ff*

Detailed description: Musical staff for E<sub>2</sub> Bass, measures 560-566. It includes triplet markings and a series of eighth notes. The dynamics *f* and *ff* are marked. A double bar line is present after measure 564.

Più animato

567

*f* *cresc.*

Stringendo

Detailed description: Musical staff for E<sub>2</sub> Bass, measures 567-572. It features triplet markings and a series of eighth notes. The dynamics *f* and *cresc.* are marked. The word 'Stringendo' is written above the staff. A double bar line is present after measure 570.

49 Più stringendo

573

Detailed description: Musical staff for E<sub>2</sub> Bass, measures 573-579. It contains a series of half notes. The instruction 'Più stringendo' is written above the staff. A double bar line is present after measure 577.

580

*longa*

Detailed description: Musical staff for E<sub>2</sub> Bass, measures 580-585. It contains a series of half notes. The word 'longa' is written above the staff. A double bar line is present after measure 584.

50 Tempo primo, poco a poco più lento

586

two players

*pp*

Detailed description: Musical staff for E<sub>2</sub> Bass, measures 586-592. It contains a series of half notes. The instruction 'Tempo primo, poco a poco più lento' is written above the staff. The words 'two players' and the dynamic *pp* are also present. A double bar line is present after measure 591.

51 sempre più lento

593

one player cue String Bass

*pp*

Detailed description: Musical staff for E<sub>2</sub> Bass, measures 593-598. It contains a series of half notes. The instruction 'sempre più lento' is written above the staff. The words 'one player cue String Bass' and the dynamic *pp* are also present. A double bar line is present after measure 597.

600

*pp*

Detailed description: Musical staff for E<sub>2</sub> Bass, measures 600-605. It contains a series of half notes. The dynamic *pp* is marked. A double bar line is present after measure 604.