

Commissioned by HAFABRA Music and dedicated to Louis MARTINUS.
Especially written for the Royal Symphonic Band of the Belgian Guides.

Festliche Ouvertüre

Trombone 3 in B♭ BC

Robin MOLL

Malinconico, ma non più lento ♩ = 60 6

2

p *f* *mp* *p*

molto rit. 10 A tempo ma poco più mosso ♩ = 72 18 molto rit. Maestoso

9

ff *sfz* *mf* *sfz* *mf* *ff*

19 allarg. A tempo

f sub. *fff*

24 allarg. A tempo

28 molto allarg. 29 A tempo ma poco meno mosso 33 Vivace ♩ = 160

fff *pp*

35 5 45

p *f* *f* *p* sub. *ff* *p*

47 marcato

ff

53 57 4

2/4

Trombone 3 in B \flat BC

61 marcato *f* *sffz*

67 poco allarg. Rubato $\text{♩} = 140$ [71] $\text{♩} = 146$ *sffz* *p* *mp*

77 poco rit. [84] A tempo *ff* *ff* 3

88 molto rall. 3 3

97 [98] // Nobilmente $\text{♩} = 142$ *mf* *f*

104 marcato *mf* *f* < >

[111] 111 *ff*

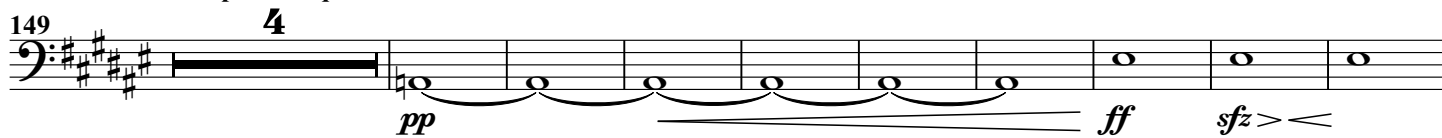
[118] 118 *fff*

126 [133] 16 *fff* *pp*

Trombone 3 in B \flat BC

149 più tranquillo

159



167

subito stretto ♩ = 146



175



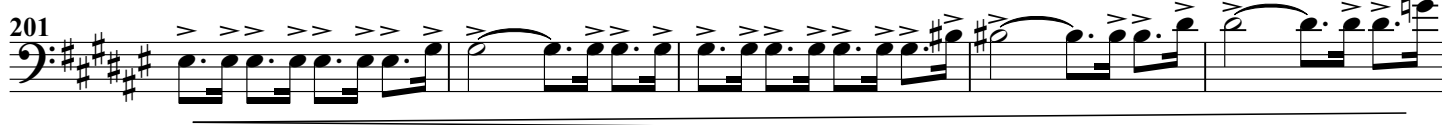
183



191



poco allarg. 200 A tempo



208

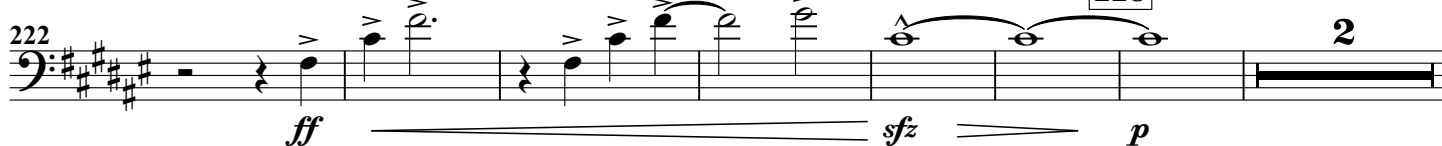


poco allarg.

215 poco tranquillo



228



Trombone 3 in B \flat BC

231 $\text{♩} = 142$ **235** **2** *mp* *ff* 3 3 3 3

239 *poco string.* 3 3

245 **247** subito $\text{♩} = 134$ **2** *f* sub.

252 **255** **259** A tempo *p* sub.

261 *rit.* **269** Con moto $\text{♩} = 120$ *mp*

271 **281**

282 *f* **289**

290 *sfz* *poco rit.* **297** // Marziale $\text{♩} = 132$ *mp* sub. *molto*

299 **301** *fff* *sfz* *sfz* *sfz* *sfz*

304 $\text{♩} = 140$ **304** *fffp* *< fff > mf*