

Commissioned by HAFABRA Music and dedicated to Louis MARTINUS.
Especially written for the Royal Symphonic Band of the Belgian Guides.

Festliche Ouvertüre

Tuba 2 in B \flat

Robin MOLL

Malinconico, ma non più lento $\text{♩} = 60$ 6 molto rit.

10 10 A tempo ma poco più mosso $\text{♩} = 72$ molto rit. 18 Maestoso

21 allarg. A tempo allarg. A tempo

27 molto allarg. 29 A tempo ma poco meno mosso 33 Vivace $\text{♩} = 160$
6

39 45

46 marcato

52

55 57 4 $\frac{2}{4}$

Tuba 2 in Bb

61 marcato *f* *sffz*

68 poco allarg. Rubato ♩ = 140 [71] ♩ = 146 *sffz* *p* *mp* *ff*

80 poco rit. [84] A tempo *ff*

93 molto rall. // [98] Nobilmente ♩ = 142 *mf*

102 *f*

111 [111] *ff* [118] *fff*

119 *ffff*

128 [133] 16 [149] più tranquillo *pp* [159] *pp*

152 *ff* [167] subito stretto ♩ = 146 *fff* *f*

174 [175]

Tuba 2 in Bb

181 183

187 191

194 200 A tempo

206 208

211 215 poco allarg. poco tranquillo

219 228 $\text{♩} = 142$ 235

237

243 poco string. 247 subito $\text{♩} = 134$
2

ff

fff

fff

fff *mf*

fff

f sub. *fff*

sfz

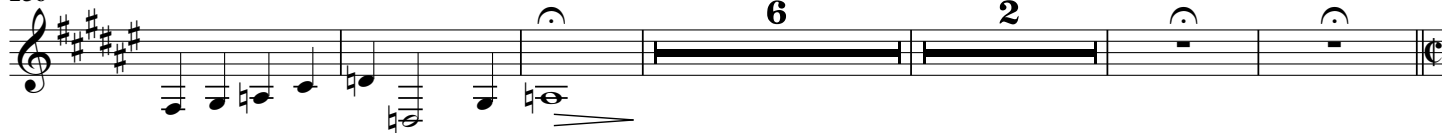
p *mp* *ff*

f sub.

249



256



269

269

Con moto $\text{♩} = 120$ 

275



281

281

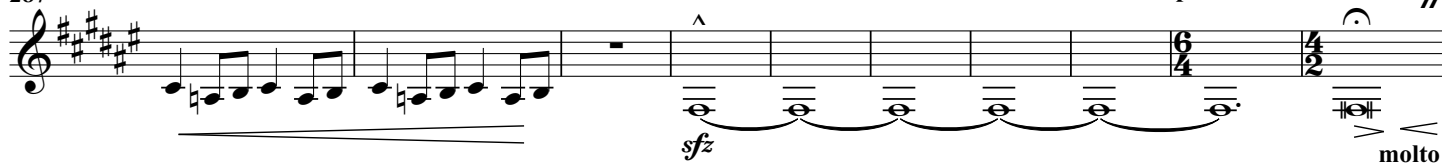


287

289

poco rit.

//

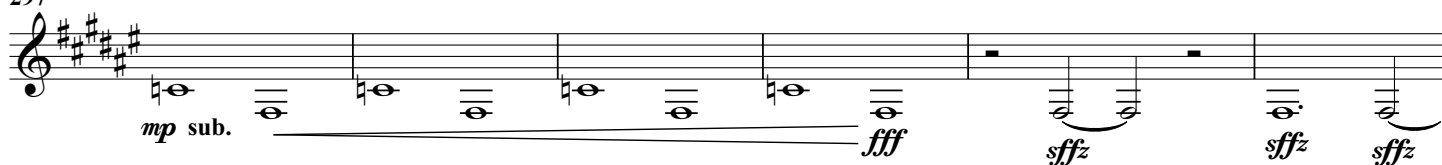


297

297

Marziale $\text{♩} = 132$

301



303

304

 $\text{♩} = 140$ 