

Horn 4 in Eb

57 57

p *f*

65 *ff* *p* *p*

poco allarg. *Rubato* ♩ = 140 71 ♩ = 146

74 *mp* *ff* *p* *fp* *ff* 84 *A tempo* *ord.*

poco rit. stopped

85

93 *molto rall.* 98 *Nobilmente* ♩ = 142 *mf*

101 *marcato* *f* *mf* *f*

107 111 *ff*

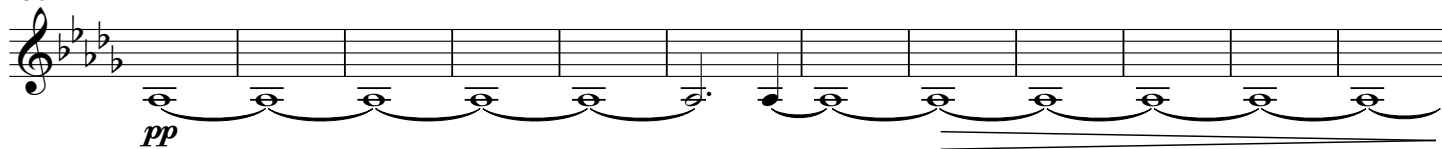
114 118 *fff*

120 *ffff*

127 133 *pp*

3

136



149

più tranquillo

148



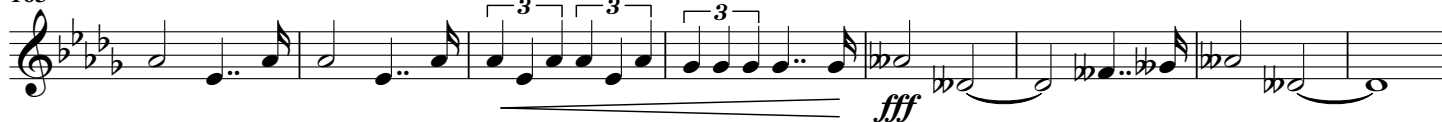
159

156



167

163



subito stretto ♩ = 146

175

171



183

178



191

185



192

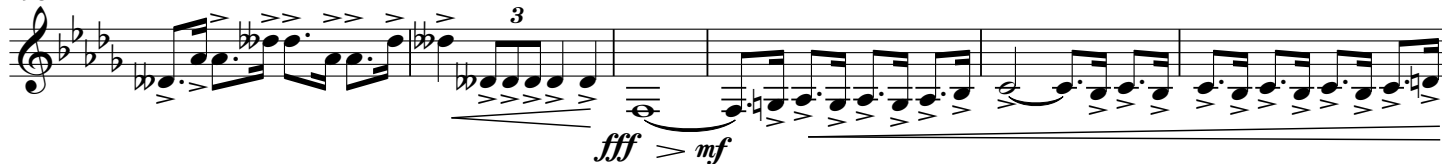


200

poco allarg.

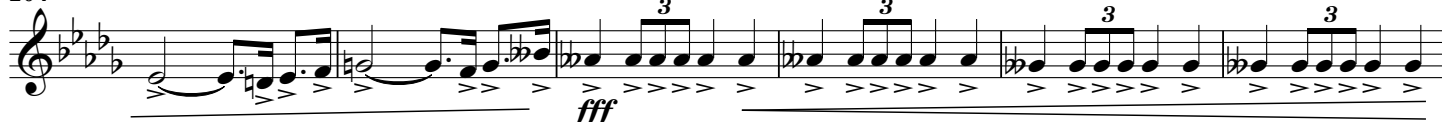
A tempo

198



208

204



Horn 4 in Eb

210 *poco allarg.* **215** *poco tranquillo* **6**

224 **228** $\text{♩} = 142$ **2** *stopped*

234 **235** *ord.* *ff* **3** **3** **3** **3**

240 *poco string.* *f sub.*

246 **247** *subito* $\text{♩} = 134$

252 **255** **259** *A tempo* **3**

262 *rit.* **269** *Con moto* $\text{♩} = 120$ **4**

276 *pp* *mp* *f* **281**

286 **289** *poco rit.* **6** **4** **2**

296 **297** *Marziale* $\text{♩} = 132$ **301** *molto* *mf* *fff* *sfz* *sfz* *sfz*

303 **304** $\text{♩} = 140$ *fff* *mf*

Commissioned by HAFABRA Music and dedicated to Louis MARTINUS.
Especially written for the Royal Symphonic Band of the Belgian Guides.

Festliche Ouvertüre

Horn 4 in Eb

Robin MOLL

Malinconico, ma non più lento ♩ = 60 6 molto rit.

10 10 A tempo ma poco più mosso ♩ = 72 molto rit. 18 Maestoso

20 allarg. A tempo *f* sub. *fff*

24 allarg. A tempo

28 molto allarg. 29 A tempo ma poco meno mosso *fff* *p*

33 33 Vivace ♩ = 160 *p* *f* *p* sub.

44 45 *ff* *p* *mf*

49 marcato *ff* *ff*