

"A mon estimé collègue et Ami José Schyns"

E♭ Bass

# Russian Spirit

Jean-Pierre HAECK

Moderato ♩ = 60

one cue String Bass

mf

This staff is in 4/4 time with a key signature of one sharp (F#). It begins with a mezzo-forte (mf) dynamic. The melody consists of eighth and quarter notes, with some measures containing beamed eighth notes. A 'one cue String Bass' instruction is placed above the staff.

**A** Play All

p mf

Section A is marked with a box 'A' and the instruction 'Play All'. It starts at measure 8. The dynamics are piano (p) and mezzo-forte (mf).

f mf

This staff continues the melody from section A, starting at measure 15. It features a forte (f) dynamic followed by a mezzo-forte (mf) dynamic.

**B** Allegro ♩ = 128

f

Section B is marked with a box 'B' and the instruction 'Allegro ♩ = 128'. It starts at measure 23. The dynamic is forte (f).

**C**

mf

Section C is marked with a box 'C'. It starts at measure 30. The dynamic is mezzo-forte (mf).

**D**

f

Section D is marked with a box 'D'. It starts at measure 37. The dynamic is forte (f).

**E**

8

Section E is marked with a box 'E'. It starts at measure 44. The dynamic is forte (f). The section ends with a repeat sign and the number 8.

2.

- E $\flat$  Bass -

F



G



H



I



J

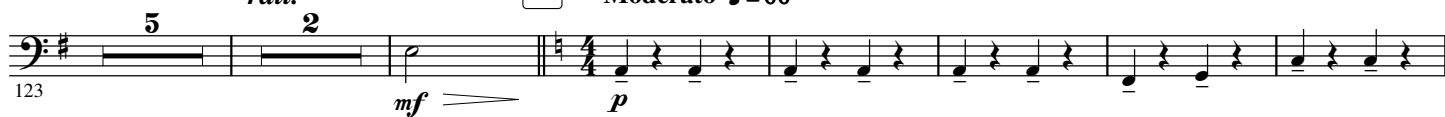


K



L

Moderato ♩ = 66



M



*rall.*

N

Lento ♩ = 58



*accel.*



O

Allegro ♩ = 128



P



Q



R



Hey