

Suite from the original motion picture

# Maverick

Wind Band

Randy NEWMAN  
arr. Roland SMEETS

## B $\flat$ Euphoniums 1/2

Adagio  $\text{♩} = 72$

5

1-5

A

*p*

*poco accel.*

*p*

11

*meno mosso*

*mf*

*ff*

B Largo  $\text{♩} = 52$

18

2

C

*pp*

*mp*

27

*rit.*

D Moderato con brio  $\text{♩} = 108$

33

3

E

7

41-47

*mp*

*p*

F

49

7

G

49-55

3

*mp*

*mp*

*mp*

62

H

*mp*

*mp*

71

I

3

*mp*

3

82 **J**

*mp*  $\overset{3}{\text{triplet}}$   $p \leftarrow mf$  *mf*

91 **K** Allegro con brio ♩ = 120

*f* *ff*

97

101

**L** 105

109

*f*

113 **M**

*mf*  $fp < f$  *pp* *mp*

122 **N** Allegro più mosso ♩ = 126

*mp* *mf* *ff* *ff*

131

*sub. p* *ff*

**O** 136

*sub. p*

**P**

143

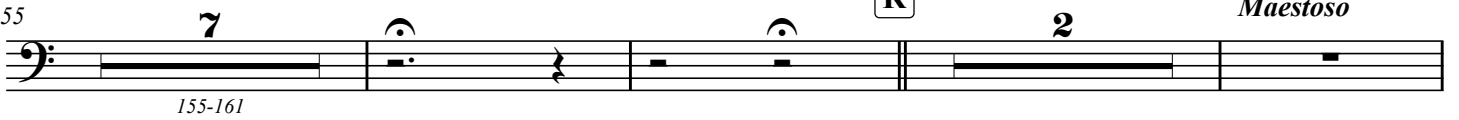


149

**Q**

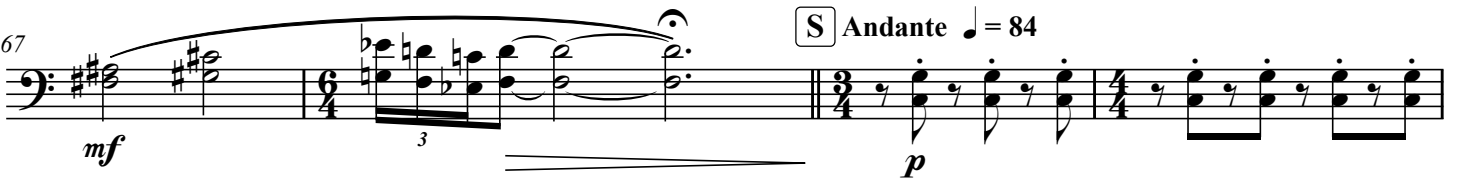
Adagio ♩ = 72

155



155-161

167

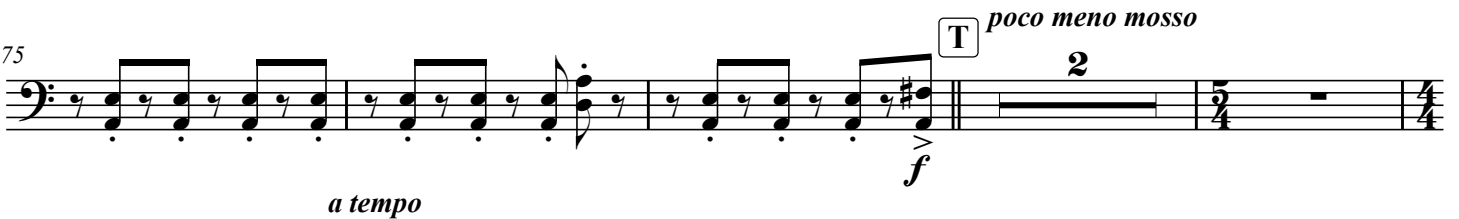
**S**

Andante ♩ = 84

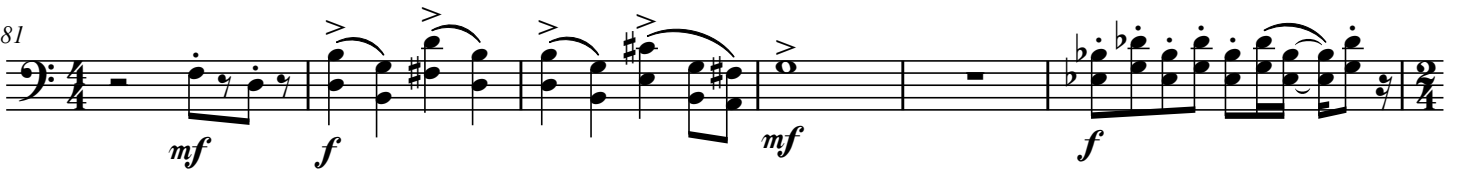
171



175



181



187



192

