

Els Encantats

Tuba in Bb

Matthew BROWN

Adagio (♩ = 60)

8 4 3

16

pp mf p

19

mp pp p > pp

33 1 player

35 all

2

pp

42

45 Allegro (♩ = 120)

2

pp p pp

51

3

f ff

60

mf f mf

61

65

p f f > pp mf pp

69

79

88

2 3 9

p p > pp pp

89

p > pp pp p

100

pp f p ff p

113

pp p pp

Tuba in B♭

119 122 Cue S. Bass

126 130 play

133 Cue S. Bass

139 144

147 poco rall. a tempo (♩ = 120) Cue S. Bass

156 play Cue S. Bass play 161

162

168

175 179 Cue S. Bass play

188 poco rall. 192 A tempo (♩ = 120)

195

Detailed description of the musical score: The score is for a Tuba in B♭ part, spanning measures 119 to 195. It begins in B♭ major. Measures 119-125 show a melodic line with dynamics p, mp, and pp. Measure 122 is a rehearsal mark. Measures 126-132 continue the melodic line with dynamics f, p, and pp. Measure 130 is a rehearsal mark. Measures 133-138 are marked 'Cue S. Bass' and 'play'. Measures 139-145 show a melodic line with dynamics mf, p, pp, f, mf, and pp. Measure 144 is a rehearsal mark. Measures 147-155 are marked 'poco rall.' and 'a tempo (♩ = 120)'. Measures 156-161 are marked 'play' and 'Cue S. Bass'. Measure 161 is a rehearsal mark. Measures 162-167 show a melodic line with dynamics fp and f. Measures 168-174 continue the melodic line with dynamics fp, ff, and pp. Measures 175-178 are marked 'Cue S. Bass' and 'play'. Measure 179 is a rehearsal mark. Measures 180-187 show a melodic line with dynamics pp, f, p, and f. Measures 188-191 are marked 'poco rall.' and 'A tempo (♩ = 120)'. Measure 192 is a rehearsal mark. Measures 193-195 continue the melodic line with dynamics f and p. The key signature changes from B♭ to B major at measure 188.

200



205



211

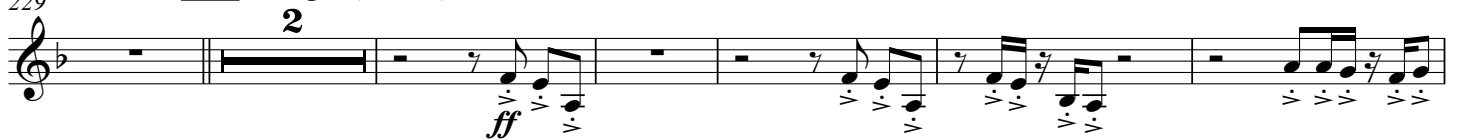


220 Moderato (♩ = 104)



accel.

230 Allegro (♩ = 120)



240



244

247



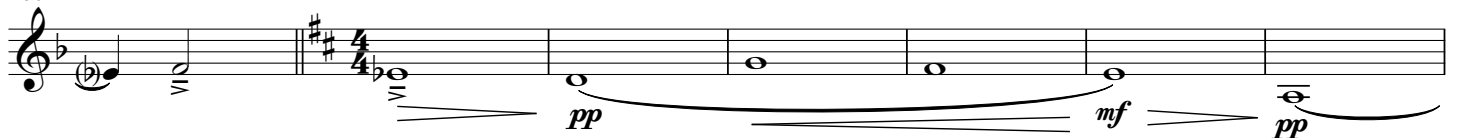
250 Presto (♩ = 156)



260

261

Moderato (♩ = 104)



267

269

Allegro (♩ = 120)

