

# Els Encantats

Trombone 1 in B♭

Matthew BROWN

**Adagio** (♩ = 60)

[illegible]

16

3

2/4 - 4/4 -

*pp*  $\triangleleft$  *p*  $\triangleright$  *pp*

9

3

35

*pp*

36 

44 **45** Allegro (♩ = 120)

*p*

*p*

50 51

*f* *p* *f*

[illegible]

61

65

7

*p* *mf* *p* *f* *pp*

72

[illegible][illegible]

## Trombone 1 in Bb

111 **113**

2

*p* *mf* *pp* *p* *pp* *p* *mp*

121 **122**

7

*pp* *mf* *pp* *f*

133 **144**

5 2

*p* *p* *pp* *p*

145 *poco rall.*

*pp* *p* *f* *pp* *mf* *pp*

154 *a tempo* (♩ = 120)

*p*

160 **161**

*ff* *f* *fp* *f*

166 *fp* *ff*

172 **179**

3 3 *con sord.*

*pp* *pp* *p*

184 *poco rall.*

*pp* *p* *pp* *mf* *pp*

**192** *A tempo* (♩ = 120) *senza sord.*

*p* *f* *p*

**200**

198 *f* *p*

## Trombone 1 in Bb

205

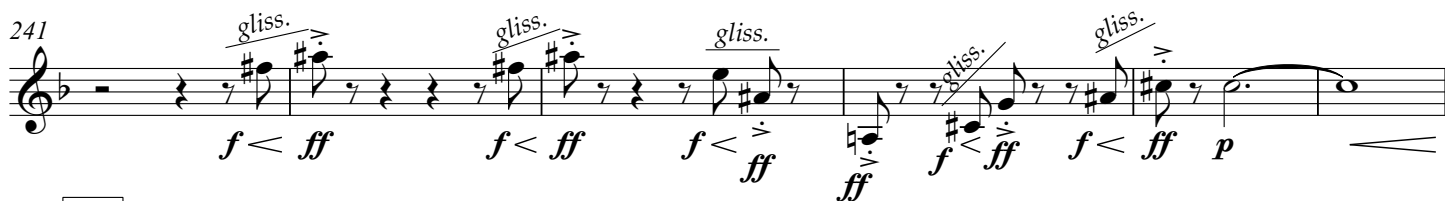


211

217

220

Moderato (♩ = 104)



247



250

Presto (♩ = 156)



261

Moderato (♩ = 104)



269

Allegro (♩ = 120)

