

Els Encantats

Tuba in B \flat BC

Matthew BROWN

Adagio ($\text{♩} = 60$)

8 4 3 16

pp *mf* *p*

19 9

mp *pp* *p* *pp*

33 1 player all 35

p *pp* *pp*

45 Allegro ($\text{♩} = 120$)

42 2

pp *p* *pp*

51 3 60

f *ff* *mf* *f* *mf*

65

61 *p* *f* *f* *pp* *mf* *pp*

69 2 3 9 88

p *p* *pp* *pp* *p*

89

p *pp* *pp* *p*

100

pp *f* *p* *ff* *p*

113

110 *pp* *pp* *p* *pp*

Tuba in B \flat BC

122

Cue S. Bass

119 *p* < mp > pp *p*

130

126 *f* *p* *pp* *pp* < f

133 Cue S. Bass

p *p*

144

139 *mf* *p* *pp* *f* *mf* > pp *pp* < p

147

poco rall. a tempo ($\text{♩} = 120$)

Cue S. Bass

pp < f > p *pp* *p* *f* *p*

161

156 *p* *p* < f *p* < f *f*

162 *fp* < f

168 *fp* < ff *pp*

179

175 *p* *pp* < p > pp < mf

poco rall.

192

A tempo ($\text{♩} = 120$)

188 *pp* < f *p* *f* *p*

195 *f* *p*

200



205



211

217



220 Moderato (♩ = 104)



230 Allegro (♩ = 120)



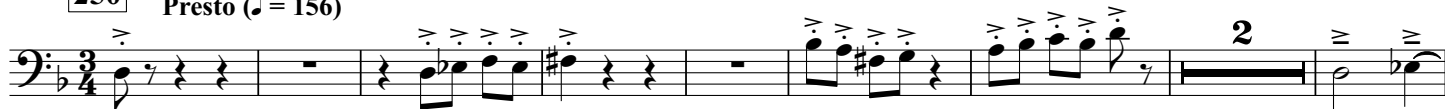
240



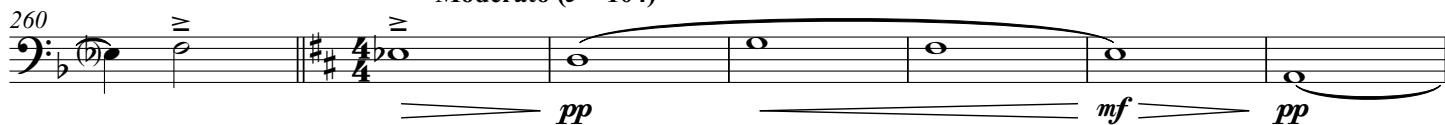
247



250 Presto (♩ = 156)



261 Moderato (♩ = 104)



269 Allegro (♩ = 120)

