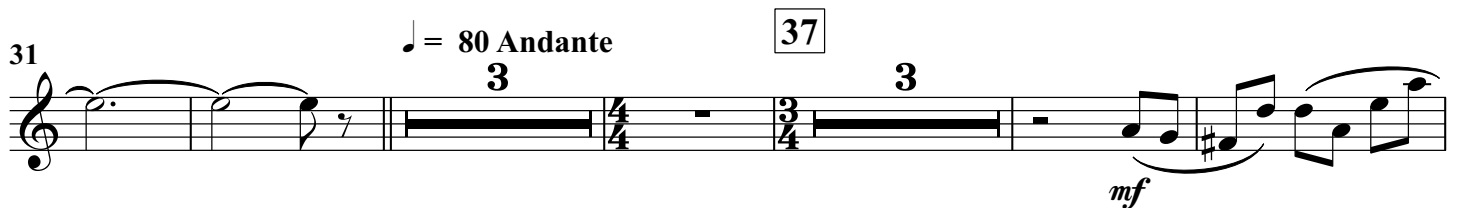
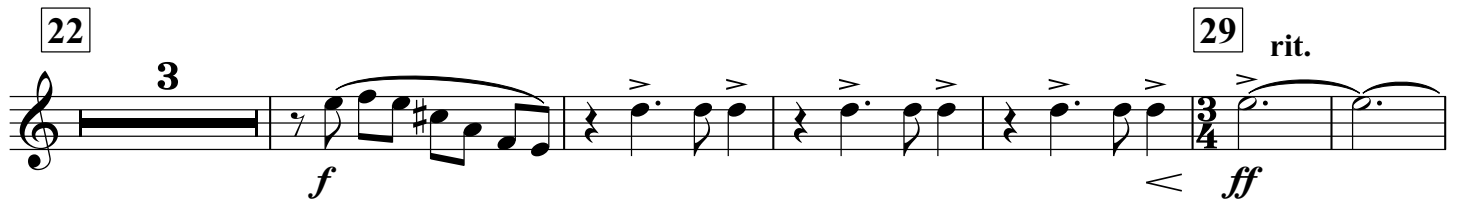


# Desert Overture Fanfare

Horn in E♭ 1

Rossano GALANTE

♩ = 100 Con Spirito



## Horn in Eb 1

56 57

56 57

*f*

3

3

Staff 56-57: Treble clef, key of E-flat major. Measure 56 starts with a quarter rest, followed by eighth notes G4, F4, E4, D4, C4, B3, A3, G3. Measure 57 starts with a quarter rest, followed by eighth notes G4, F4, E4, D4, C4, B3, A3, G3. Dynamics: *f*. Articulation: accents on measures 56 and 57. Fingerings: 3 in measures 56 and 57.

60 65

60 65

*f* *mp*

2

Staff 60-65: Treble clef, key of E-flat major. Measure 60 starts with a quarter rest, followed by eighth notes G4, F4, E4, D4, C4, B3, A3, G3. Measure 61 is a whole rest. Measure 62 starts with a quarter rest, followed by eighth notes G4, F4, E4, D4, C4, B3, A3, G3. Measure 63 starts with a quarter rest, followed by eighth notes G4, F4, E4, D4, C4, B3, A3, G3. Measure 64 starts with a quarter rest, followed by eighth notes G4, F4, E4, D4, C4, B3, A3, G3. Measure 65 starts with a quarter rest, followed by eighth notes G4, F4, E4, D4, C4, B3, A3, G3. Dynamics: *f* in measure 62, *mp* in measure 65. Articulation: accents on measures 60, 62, 63, 64, and 65. Fingerings: 2 in measure 61.

66

66 70

*f* *p* *ff* *mf*

3

Staff 66-70: Treble clef, key of E-flat major. Measure 66 starts with a quarter rest, followed by eighth notes G4, F4, E4, D4, C4, B3, A3, G3. Measure 67 starts with a quarter rest, followed by eighth notes G4, F4, E4, D4, C4, B3, A3, G3. Measure 68 starts with a quarter rest, followed by eighth notes G4, F4, E4, D4, C4, B3, A3, G3. Measure 69 starts with a quarter rest, followed by eighth notes G4, F4, E4, D4, C4, B3, A3, G3. Measure 70 starts with a quarter rest, followed by eighth notes G4, F4, E4, D4, C4, B3, A3, G3. Dynamics: *f* in measure 66, *p* in measure 67, *ff* in measure 68, *mf* in measure 69. Articulation: accents on measures 66, 67, 68, 69, and 70. Fingerings: 3 in measure 66.

70

70 73

*f*

Staff 70-73: Treble clef, key of E-flat major. Measure 70 starts with a quarter rest, followed by eighth notes G4, F4, E4, D4, C4, B3, A3, G3. Measure 71 starts with a quarter rest, followed by eighth notes G4, F4, E4, D4, C4, B3, A3, G3. Measure 72 starts with a quarter rest, followed by eighth notes G4, F4, E4, D4, C4, B3, A3, G3. Measure 73 starts with a quarter rest, followed by eighth notes G4, F4, E4, D4, C4, B3, A3, G3. Dynamics: *f* in measure 70. Articulation: accents on measures 70, 71, 72, and 73.

73

73 78

3/4

Staff 73-78: Treble clef, key of E-flat major. Measure 73 starts with a quarter rest, followed by eighth notes G4, F4, E4, D4, C4, B3, A3, G3. Measure 74 starts with a quarter rest, followed by eighth notes G4, F4, E4, D4, C4, B3, A3, G3. Measure 75 starts with a quarter rest, followed by eighth notes G4, F4, E4, D4, C4, B3, A3, G3. Measure 76 starts with a quarter rest, followed by eighth notes G4, F4, E4, D4, C4, B3, A3, G3. Measure 77 starts with a quarter rest, followed by eighth notes G4, F4, E4, D4, C4, B3, A3, G3. Measure 78 starts with a quarter rest, followed by eighth notes G4, F4, E4, D4, C4, B3, A3, G3. Dynamics: *f* in measure 73. Articulation: accents on measures 73, 74, 75, 76, 77, and 78. Time signature: 3/4 in measure 76.

78 82

78 82

*ff* *f*

Staff 78-82: Treble clef, key of E-flat major. Measure 78 starts with a quarter rest, followed by eighth notes G4, F4, E4, D4, C4, B3, A3, G3. Measure 79 starts with a quarter rest, followed by eighth notes G4, F4, E4, D4, C4, B3, A3, G3. Measure 80 starts with a quarter rest, followed by eighth notes G4, F4, E4, D4, C4, B3, A3, G3. Measure 81 starts with a quarter rest, followed by eighth notes G4, F4, E4, D4, C4, B3, A3, G3. Measure 82 starts with a quarter rest, followed by eighth notes G4, F4, E4, D4, C4, B3, A3, G3. Dynamics: *ff* in measure 78, *f* in measure 82. Articulation: accents on measures 78, 79, 80, 81, and 82.

86

86 90

Staff 86-90: Treble clef, key of E-flat major. Measure 86 starts with a quarter rest, followed by eighth notes G4, F4, E4, D4, C4, B3, A3, G3. Measure 87 starts with a quarter rest, followed by eighth notes G4, F4, E4, D4, C4, B3, A3, G3. Measure 88 starts with a quarter rest, followed by eighth notes G4, F4, E4, D4, C4, B3, A3, G3. Measure 89 starts with a quarter rest, followed by eighth notes G4, F4, E4, D4, C4, B3, A3, G3. Measure 90 starts with a quarter rest, followed by eighth notes G4, F4, E4, D4, C4, B3, A3, G3. Dynamics: *f* in measure 86. Articulation: accents on measures 86, 87, 88, 89, and 90.

93 94

93 97

4/4

Staff 93-97: Treble clef, key of E-flat major. Measure 93 starts with a quarter rest, followed by eighth notes G4, F4, E4, D4, C4, B3, A3, G3. Measure 94 starts with a quarter rest, followed by eighth notes G4, F4, E4, D4, C4, B3, A3, G3. Measure 95 starts with a quarter rest, followed by eighth notes G4, F4, E4, D4, C4, B3, A3, G3. Measure 96 starts with a quarter rest, followed by eighth notes G4, F4, E4, D4, C4, B3, A3, G3. Measure 97 starts with a quarter rest, followed by eighth notes G4, F4, E4, D4, C4, B3, A3, G3. Dynamics: *f* in measure 93. Articulation: accents on measures 93, 94, 95, 96, and 97. Time signature: 4/4 in measure 94.

97

97 100

rit. A Tempo

*ff*

Staff 97-100: Treble clef, key of E-flat major. Measure 97 starts with a quarter rest, followed by eighth notes G4, F4, E4, D4, C4, B3, A3, G3. Measure 98 starts with a quarter rest, followed by eighth notes G4, F4, E4, D4, C4, B3, A3, G3. Measure 99 starts with a quarter rest, followed by eighth notes G4, F4, E4, D4, C4, B3, A3, G3. Measure 100 starts with a quarter rest, followed by eighth notes G4, F4, E4, D4, C4, B3, A3, G3. Dynamics: *ff* in measure 97. Articulation: accents on measures 97, 98, 99, and 100. Tempo markings: *rit.* in measure 97, *A Tempo* in measure 98.