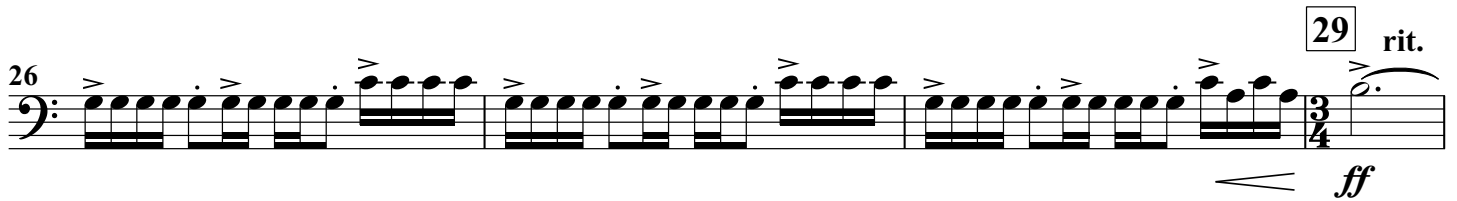
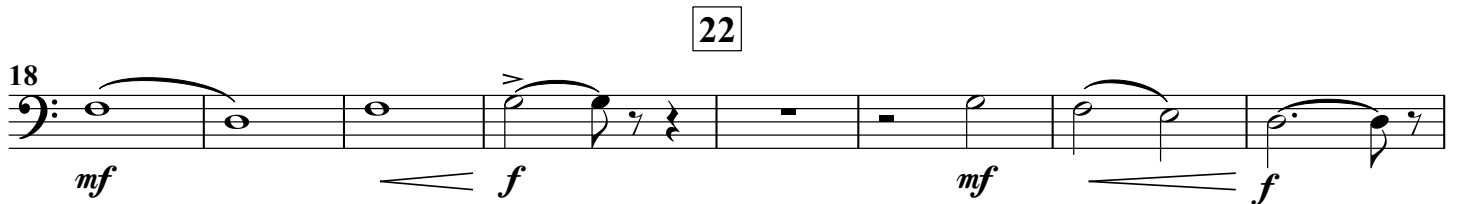
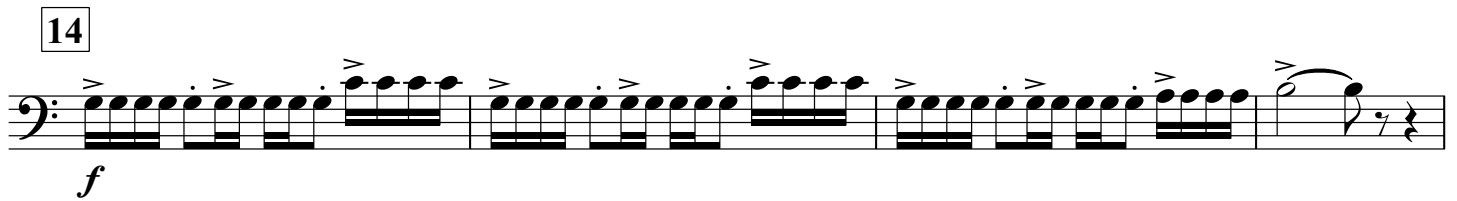
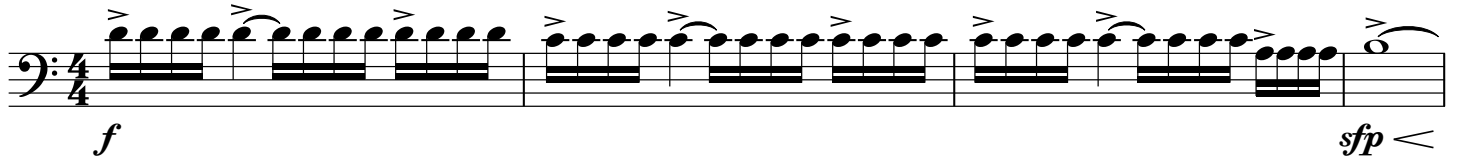


Desert Overture Fanfare

Trombone 3 in B \flat B C

Rossano GALANTE

$\text{♩} = 100$ Con Spirito



54 57

p < *mf*

Staff 54-57: Bass clef, 4/4 time. Measure 54 has a whole rest. Measures 55-57 contain eighth-note patterns with accents. Measure 57 is marked with a box containing the number 57.

58 2

Staff 58-62: Bass clef, 4/4 time. Measures 58-62 contain eighth-note patterns with accents. Measure 62 ends with a whole rest and a repeat sign. A large number 2 is written above the final measure.

63 65

f

Staff 63-66: Bass clef, 4/4 time. Measures 63-66 contain eighth-note patterns with accents. Measure 65 is marked with a box containing the number 65. Measure 66 has a triplet of eighth notes.

67

mf

Staff 67-70: Bass clef, 4/4 time. Measures 67-70 contain eighth-note patterns with accents. Measure 70 has a triplet of eighth notes.

71 73

sfz *f*

Staff 71-74: Bass clef, 4/4 time. Measures 71-74 contain eighth-note patterns with accents. Measure 71 is marked with *sfz*. Measure 73 is marked with a box containing the number 73. Measure 74 has a triplet of eighth notes.

75

ff *f*

Staff 75-81: Bass clef, 4/4 time. Measures 75-81 contain eighth-note patterns with accents. Measure 75 is marked with *ff*. Measure 81 is marked with *f*.

82

Staff 82-93: Bass clef, 4/4 time. Measures 82-93 contain eighth-note patterns with accents. Measure 82 is marked with a box containing the number 82.

90 94

Staff 90-95: Bass clef, 4/4 time. Measures 90-95 contain eighth-note patterns with accents. Measure 94 is marked with a box containing the number 94.

96

rit. *A Tempo* *ff*

Staff 96-100: Bass clef, 4/4 time. Measures 96-100 contain eighth-note patterns with accents. Measure 96 is marked with *rit.*. Measure 98 is marked with *A Tempo*. Measure 100 is marked with *ff*.