

## B $\flat$ Euphonium 2

# Refugees

Lyrics: Jacques AUSSEMS

Music: Hardy MERTENS

$\text{♩} = \pm 50$

1 *pp*

7

12

18  $\text{p}$

25 *mf*

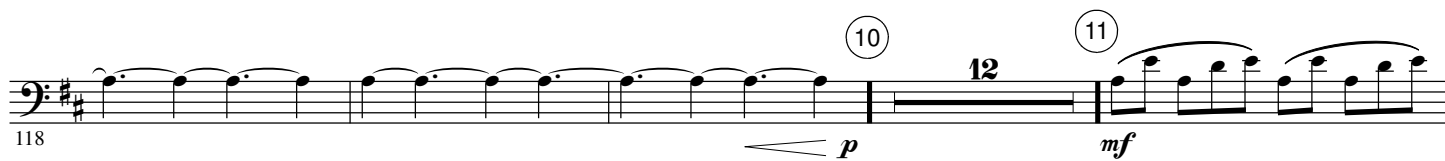
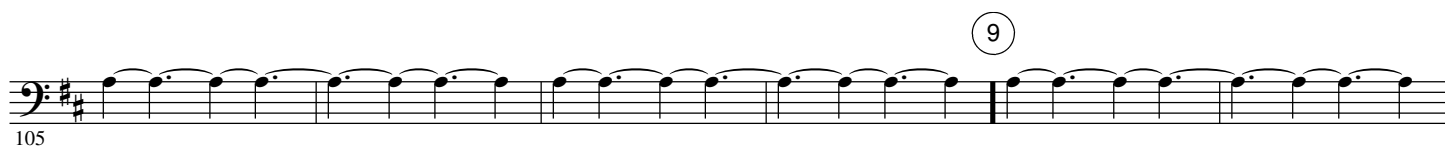
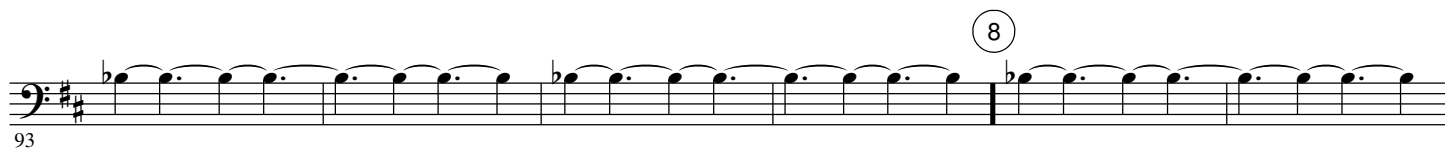
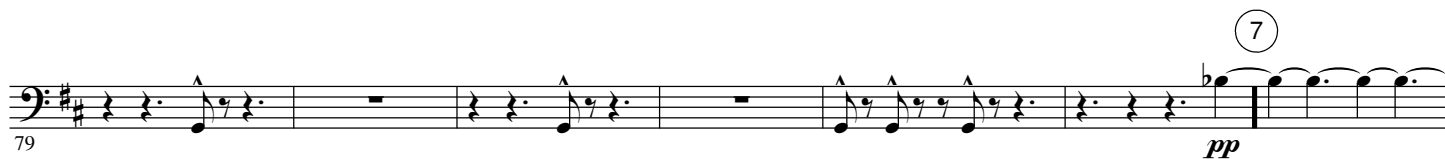
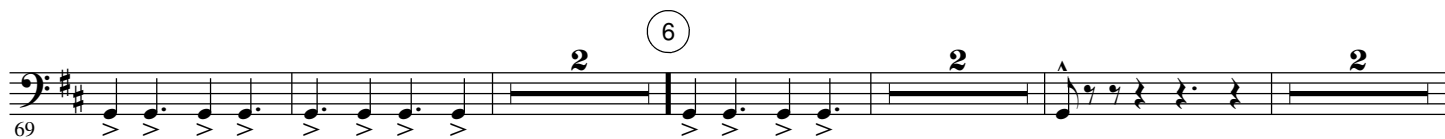
41

45

49 *pp*

55

60 *ff*



138

Staff 138-141: Bass clef, key of D major (two sharps). Measures 138-141 contain eighth-note patterns with slurs and accidentals (flats).

142

Staff 142-146: Bass clef, key of D major. Measures 142-146 contain eighth-note patterns with slurs and accidentals. Measure 146 is marked with a crescendo hairpin and the dynamic *pp*. A circled number 12 is above measure 146.

147

Staff 147-152: Bass clef, key of D major. Measures 147-152 contain eighth-note patterns with slurs.

153

Staff 153-161: Bass clef, key of D major. Measures 153-161 contain eighth-note patterns with slurs and accents. Measure 153 is marked with the dynamic *ff*. Measures 155 and 159 contain double bar lines with a '2' above them, indicating a two-measure rest.

162

Staff 162-171: Bass clef, key of D major. Measures 162-171 contain eighth-note patterns with slurs and accents. Measures 165 and 169 contain double bar lines with a '2' above them. Measure 171 is marked with the dynamic *ff*. A circled number 14 is above measure 170.

172

Staff 172-176: Bass clef, key of D major. Measures 172-176 contain eighth-note patterns with slurs and accents.

177

Staff 177-188: Bass clef, key of D major. Measures 177-188 contain eighth-note patterns with slurs and accents. Measure 188 is marked with a circled number 15 and an 8 above it, indicating an eight-measure rest.

189

Staff 189-195: Bass clef, key of D major. Measures 189-195 contain eighth-note patterns with slurs and accents. Measure 189 is marked with the dynamic *ff*. Measure 192 is marked with the dynamic *pp*. A circled number 16 is above measure 192, with the text 'Staggered breathing' to its right.

196

Staff 196-200: Bass clef, key of D major. Measures 196-200 contain eighth-note patterns with slurs. Measure 199 contains a double bar line with a '2' above it, indicating a two-measure rest. Measure 200 ends with a fermata.