

"Commissioned by and dedicated to the 'Bergkapelle Saar' and their conductor Bernhard STOPP"

Steiger Variationen

Tuba in Eb BC

Jörg MURSCHINSKI

Allegro brillante (♩ = 112)

3

11 accel.

f 7 *sfz* *f marcato* *sfzp*

12

cresc. *f* *ff* *f dim.* *mf* *p*

Allegro giocoso (♩ = 132)

15

21

3

mf *p* *mf* *mf*

29

33

f *mf cresc.*

34

ff

41

1 player

mp dim. *pp*

2

Tuba in Eb BC

45 **ff** **46** **Pesante** $\text{♩} = 52$ *nach Carl Orff* **50** **Più mosso** ($\text{♩} = 132$) **1 player** **pp**

66

53

67

82 **Più mosso** ($\text{♩} = 144$)

81 **f**

98

95

105

114 **Più mosso** ($\text{♩} = 160$)

fff *nach G. F. Händel*

123 **Allegro** ($\text{♩} = 108$) **131**

8 **10** **8** **141** **Maestoso** ($\text{♩} = 92$) **11**

*nach W. A. Mozart***151** **Allegretto** ($\text{♩} = 120$) **160**

9 **8** **8** **8** **168** **8** **176** **8** **184** **16**

200**208****216****224**

8 **8** **8** **11**

*nach L. v. Beethoven***236** **Allegro con brio** ($\text{♩} = 100$) **240**

12 **ff** **p** **f** **ff**

Tuba in Eb BC

258 **13** **278**

p *sf* *sf* *sf* *sf* *f*

283

ff

5

16

298

314

8

cresc.

330

ff

332

Musical notation for measures 332 through 340. Measure 332 starts with a bass clef and contains six eighth notes: G2, F2, E2, D2, C2, B1. Measures 333-336 each contain two eighth notes: G2, F2; E2, D2; C2, B1; A1, G1 respectively. Measure 337 has a whole rest. Measure 338 begins with a key signature change to one sharp (F#) and contains four eighth notes: G2, F#2, E2, D2. Measure 339 continues with four eighth notes: C2, B1, A1, G1. Measure 340 concludes with four eighth notes: F#2, E2, D2, C2.

345 347



345

367 371

The image shows a musical score for the bass line of 'The Rose Tree'. It consists of a single staff with a treble clef and a key signature of one sharp (F#). The music is written in a simple, folk-like style. The first measure is marked with the number 367. The second measure is marked with the number 371, which is enclosed in a box. The melody is composed of eighth and quarter notes, with some rests. The overall mood is light and cheerful.

374

The image shows a single musical staff for the 374th measure. The staff is in bass clef with a key signature of one sharp (F#). The measure contains a sequence of notes: G2 (half note), A2 (quarter note), B2 (quarter note), C3 (half note), D3 (quarter note), E3 (quarter note), F#3 (half note), G3 (quarter note), A3 (quarter note), B3 (half note), C4 (quarter note), D4 (quarter note), E4 (half note), F#4 (quarter note), G4 (quarter note), A4 (half note), B4 (quarter note), C5 (quarter note), D5 (half note), E5 (quarter note), F#5 (quarter note), G5 (half note), A5 (quarter note), B5 (quarter note), C6 (half note), D6 (quarter note), E6 (quarter note), F#6 (half note), G6 (quarter note), A6 (quarter note), B6 (half note), C7 (quarter note), D7 (quarter note), E7 (half note), F#7 (quarter note), G7 (quarter note), A7 (half note), B7 (quarter note), C8 (quarter note), D8 (half note), E8 (quarter note), F#8 (quarter note), G8 (half note), A8 (quarter note), B8 (quarter note), C9 (half note), D9 (quarter note), E9 (quarter note), F#9 (half note), G9 (quarter note), A9 (quarter note), B9 (half note), C10 (quarter note), D10 (quarter note), E10 (half note), F#10 (quarter note), G10 (quarter note), A10 (half note), B10 (quarter note), C11 (quarter note), D11 (half note), E11 (quarter note), F#11 (quarter note), G11 (half note), A11 (quarter note), B11 (quarter note), C12 (half note), D12 (quarter note), E12 (quarter note), F#12 (half note), G12 (quarter note), A12 (quarter note), B12 (half note), C13 (quarter note), D13 (quarter note), E13 (half note), F#13 (quarter note), G13 (quarter note), A13 (half note), B13 (quarter note), C14 (quarter note), D14 (half note), E14 (quarter note), F#14 (quarter note), G14 (half note), A14 (quarter note), B14 (quarter note), C15 (half note), D15 (quarter note), E15 (quarter note), F#15 (half note), G15 (quarter note), A15 (quarter note), B15 (half note), C16 (quarter note), D16 (quarter note), E16 (half note), F#16 (quarter note), G16 (quarter note), A16 (half note), B16 (quarter note), C17 (quarter note), D17 (half note), E17 (quarter note), F#17 (quarter note), G17 (half note), A17 (quarter note), B17 (quarter note), C18 (half note), D18 (quarter note), E18 (quarter note), F#18 (half note), G18 (quarter note), A18 (quarter note), B18 (half note), C19 (quarter note), D19 (quarter note), E19 (half note), F#19 (quarter note), G19 (quarter note), A19 (half note), B19 (quarter note), C20 (quarter note), D20 (half note), E20 (quarter note), F#20 (quarter note), G20 (half note), A20 (quarter note), B20 (quarter note), C21 (half note), D21 (quarter note), E21 (quarter note), F#21 (half note), G21 (quarter note), A21 (quarter note), B21 (half note), C22 (quarter note), D22 (quarter note), E22 (half note), F#22 (quarter note), G22 (quarter note), A22 (half note), B22 (quarter note), C23 (quarter note), D23 (half note), E23 (quarter note), F#23 (quarter note), G23 (half note), A23 (quarter note), B23 (quarter note), C24 (half note), D24 (quarter note), E24 (quarter note), F#24 (half note), G24 (quarter note), A24 (quarter note), B24 (half note), C25 (quarter note), D25 (quarter note), E25 (half note), F#25 (quarter note), G25 (quarter note), A25 (half note), B25 (quarter note), C26 (quarter note), D26 (half note), E26 (quarter note), F#26 (quarter note), G26 (half note), A26 (quarter note), B26 (quarter note), C27 (half note), D27 (quarter note), E27 (quarter note), F#27 (half note), G27 (quarter note), A27 (quarter note), B27 (half note), C28 (quarter note), D28 (quarter note), E28 (half note), F#28 (quarter note), G28 (quarter note), A28 (half note), B28 (quarter note), C29 (quarter note), D29 (half note), E29 (quarter note), F#29 (quarter note), G29 (half note), A29 (quarter note), B29 (quarter note), C30 (half note), D30 (quarter note), E30 (quarter note), F#30 (half note), G30 (quarter note), A30 (quarter note), B30 (half note), C31 (quarter note), D31 (quarter note), E31 (half note), F#31 (quarter note), G31 (quarter note), A31 (half note), B31 (quarter note), C32 (quarter note), D32 (half note), E32 (quarter note), F#32 (quarter note), G32 (half note), A32 (quarter note), B32 (quarter note), C33 (half note), D33 (quarter note), E33 (quarter note), F#33 (half note), G33 (quarter note), A33 (quarter note), B33 (half note), C34 (quarter note), D34 (quarter note), E34 (half note), F#34 (quarter note), G34 (quarter note), A34 (half note), B34 (quarter note), C35 (quarter note), D35 (half note), E35 (quarter note), F#35 (quarter note), G35 (half note), A35 (quarter note), B35 (quarter note), C36 (half note), D36 (quarter note), E36 (quarter note), F#36 (half note), G36 (quarter note), A36 (quarter note), B36 (half note), C37 (quarter note), D37 (quarter note), E37 (half note), F#37 (quarter note), G37 (quarter note), A37 (half note), B37 (quarter note), C38 (quarter note), D38 (half note), E38 (quarter note), F#38 (quarter note), G38 (half note), A38 (quarter note), B38 (quarter note), C39 (half note), D39 (quarter note), E39 (quarter note), F#39 (half note), G39 (quarter note), A39 (quarter note), B39 (half note), C40 (quarter note), D40 (quarter note), E40 (half note), F#40 (quarter note), G40 (quarter note), A40 (half note), B40 (quarter note), C41 (quarter note), D41 (half note), E41 (quarter note), F#41 (quarter note), G41 (half note), A41 (quarter note), B41 (quarter note), C42 (half note), D42 (quarter note), E42 (quarter note), F#42 (half note), G42 (quarter note), A42 (quarter note), B42 (half note), C43 (quarter note), D43 (quarter note), E43 (half note), F#43 (quarter note), G43 (quarter note), A43 (half note), B43 (quarter note), C44 (quarter note), D44 (half note), E44 (quarter note), F#44 (quarter note), G44 (half note), A44 (quarter note), B44 (quarter note), C45 (half note), D45 (quarter note), E45 (quarter note), F#45 (half note), G45 (quarter note), A45 (quarter note), B45 (half note), C46 (quarter note), D46 (quarter note), E46 (half note), F#46 (quarter note), G46 (quarter note), A46 (half note), B46 (quarter note), C47 (quarter note), D47 (half note), E47 (quarter note), F#47 (quarter note), G47 (half note), A47 (quarter note), B47 (quarter note), C48 (half note), D48 (quarter note), E48 (quarter note), F#48 (half note), G48 (quarter note), A48 (quarter note), B48 (half note), C49 (quarter note), D49 (quarter note), E49 (half note), F#49 (quarter note), G49 (quarter note), A49 (half note), B49 (quarter note), C50 (quarter note), D50 (half note), E50 (quarter note), F#50 (quarter note), G50 (half note), A50 (quarter note), B50 (quarter note), C51 (half note), D51 (quarter note), E51 (quarter note), F#51 (half note), G51 (quarter note), A51 (quarter note), B51 (half note), C52 (quarter note), D52 (quarter note), E52 (half note), F#52 (quarter note), G52 (quarter note), A52 (half note), B52 (quarter note), C53 (quarter note), D53 (half note), E53 (quarter note), F#53 (quarter note), G53 (half note), A53 (quarter note), B53 (quarter note), C54 (half note), D54 (quarter note), E54 (quarter note), F#54 (half note), G54 (quarter note), A54 (quarter note), B54 (half note), C55 (quarter note), D55 (quarter note), E55 (half note), F#55 (quarter note), G55 (quarter note), A55 (half note), B55 (quarter note), C56 (quarter note), D56 (half note), E56 (quarter note), F#56 (quarter note), G56 (half note), A56 (quarter note), B56 (quarter note), C57 (half note), D57 (quarter note), E57 (quarter note), F#57 (half note), G57 (quarter note), A57 (quarter note), B57 (half note), C58 (quarter note), D58 (quarter note), E58 (half note), F#58 (quarter note), G58 (quarter note), A58 (half note), B58 (quarter note), C59 (quarter note), D59 (half note), E59 (quarter note), F#59 (quarter note), G59 (half note), A59 (quarter note), B59 (quarter note), C60 (half note), D60 (quarter note), E60 (quarter note), F#60 (half note), G60 (quarter note), A60 (quarter note), B60 (half note), C61 (quarter note), D61 (quarter note), E61 (half note), F#61 (quarter note), G61 (quarter note), A61 (half note), B61 (quarter note), C62 (quarter note), D62 (half note), E62 (quarter note), F#62 (quarter note), G62 (half note), A62 (quarter note), B62 (quarter note), C63 (half note), D63 (quarter note), E63 (quarter note), F#63 (half note), G63 (quarter note), A63 (quarter note), B63 (half note), C64 (quarter note), D64 (quarter note), E64 (half note), F#64 (quarter note), G64 (quarter note), A64 (half note), B64 (quarter note), C65 (quarter note), D65 (half note), E65 (quarter note), F#65 (quarter note), G65 (half note), A65 (quarter note), B65 (quarter note), C66 (half note), D66 (quarter note), E66 (quarter note), F#66 (half note), G66 (quarter note), A66 (quarter note), B66 (half note), C67 (quarter note), D67 (quarter note), E67 (half note), F#67 (quarter note), G67 (quarter note), A67 (half note), B67 (quarter note), C68 (quarter note), D68 (half note), E68 (quarter note), F#68 (quarter note), G68 (half note), A68 (quarter note), B68 (quarter note), C69 (half note), D69 (quarter note), E69 (quarter note), F#69 (half note), G69 (quarter note), A69 (quarter note), B69 (half note), C70 (quarter note), D70 (quarter note), E70 (half note), F#70 (quarter note), G70 (quarter note), A70 (half note), B70 (quarter note), C71 (quarter note), D71 (half note), E71 (quarter note), F#71 (quarter note), G71 (half note), A71 (quarter note), B71 (quarter note), C72 (half note), D72 (quarter note), E72 (quarter note), F#72 (half note), G72 (quarter note), A72 (quarter note), B72 (half note), C73 (quarter note), D73 (quarter note), E73 (half note), F#73 (quarter note), G73 (quarter note), A73 (half note), B73 (quarter note), C74 (quarter note), D74 (half note), E74 (quarter note), F#74 (quarter note), G74 (half note), A74 (quarter note), B74 (quarter note), C75 (half note), D75 (quarter note), E75 (quarter note), F#75 (half note), G75 (quarter note), A75 (quarter note), B75 (half note), C76 (quarter note), D76 (quarter note), E76 (half note), F#76 (quarter note), G76 (quarter note), A76 (half note), B76 (quarter note), C77 (quarter note), D77 (half note), E77 (quarter note), F#77 (quarter note), G77 (half note), A77 (quarter note), B77 (quarter note), C78 (half note), D78 (quarter note), E78 (quarter note), F#78 (half note), G78 (quarter note), A78 (quarter note), B78 (half note), C79 (quarter note), D79 (quarter note), E79 (half note), F#79 (quarter note), G79 (quarter note), A79 (half note), B79 (quarter note), C80 (quarter note), D80 (half note), E80 (quarter note), F#80 (quarter note), G80 (half note), A80 (quarter note), B80 (quarter note), C81 (half note), D81 (quarter note), E81 (quarter note), F#81 (half note), G81 (quarter note), A81 (quarter note), B81 (half note), C82 (quarter note), D82 (quarter note), E82 (half note), F#82 (quarter note), G82 (quarter note), A82 (half note), B82 (quarter note), C83 (quarter note), D83 (half note), E83 (quarter note), F#83 (quarter note), G83 (half note), A83 (quarter note), B83 (quarter note), C84 (

381

381

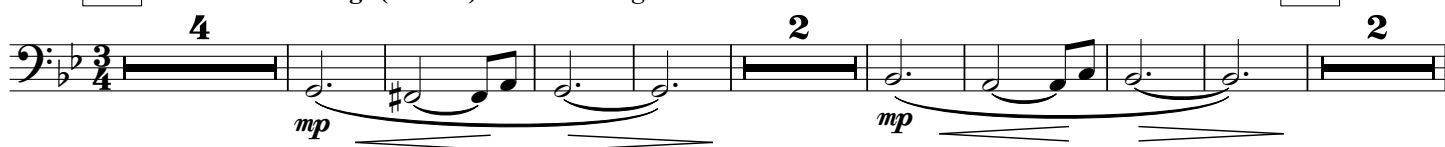
386 // **388** **Tempo di Valse** (♩. = 60) *nach P. Tschaikowsky*
6

Tuba in Eb BC



474 Nervös und erregt (♩ = 112) nach R. Wagner

488



506 Allegro moderato. Feroce (♩ = 96) nach J. Williams



510



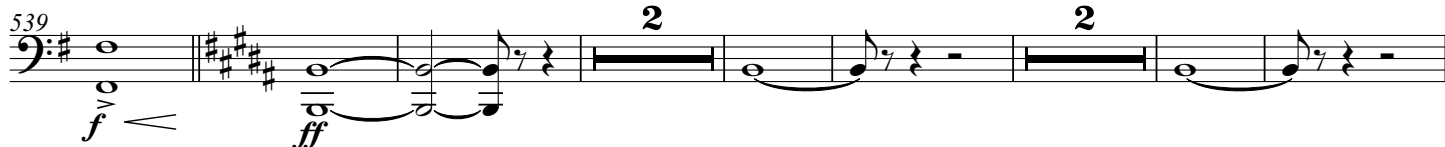
522



530



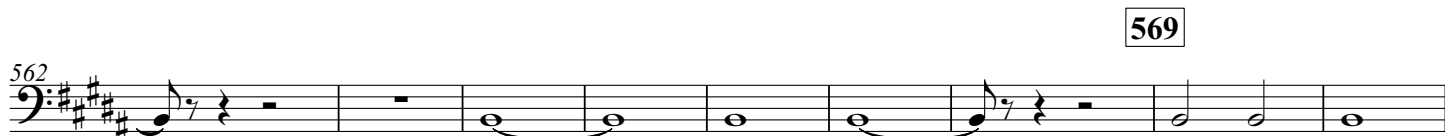
540 Finale. Maestoso ma non troppo (♩=120) nach D. Schostakowitsch



550



559



569



molto rit.

