

# IBERIA

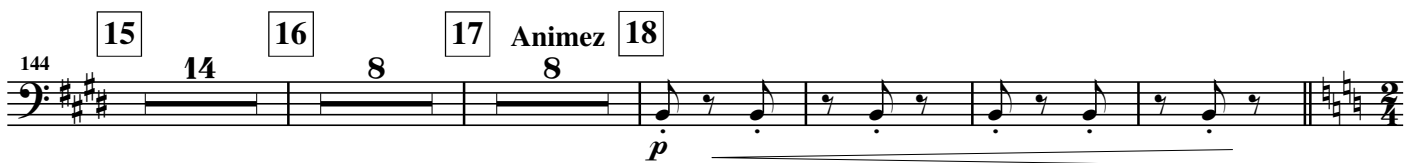
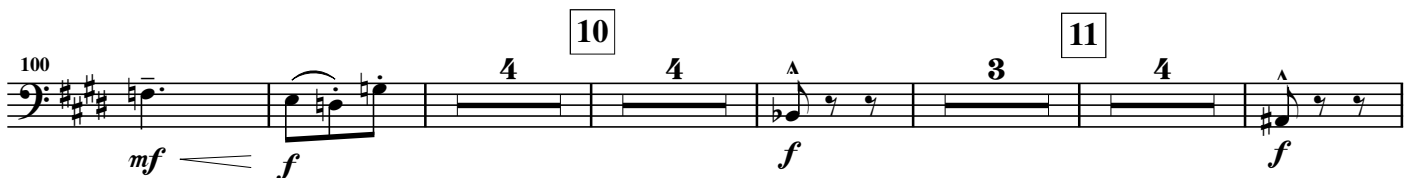
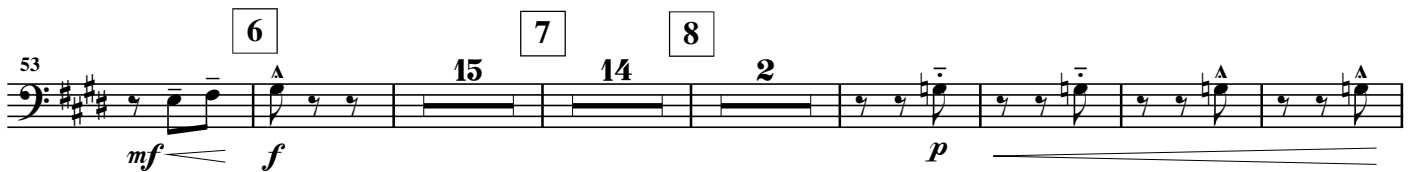
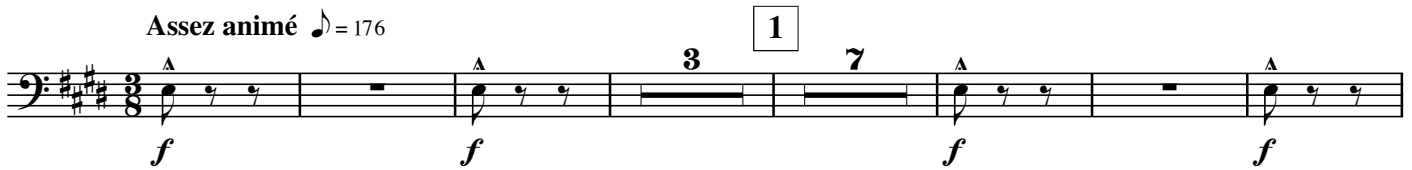
E♭ Bass

Par les rues et par les chemins

Claude DEBUSSY

arr. José SCHYNS

Assez animé ♩ = 176



186 **a Tempo** (♩ = 132)

*p*

193 **20**

200 **21**

*f*

212 **22** **Expressif et souple** (♩ = 132, pour commencer)

*p*

220 **23** **Rubato** **a Tempo**

227 **Rubato** **a Tempo**

234 **24** **1° Tempo** **25** **26** **27** **En animant** **28**

268 **29**

*mf* *f* *sfz*

274 30

sfz *f* *f* *f* *f* *f*

Staff 274-282: Bass clef, key of D major (F# C# G#). Measure 274: sfz. Measure 275: triplet of eighth notes. Measures 276-282: eighth notes with accents, dynamics *f*.

283

*f* *f* *mf* *mf* *mf* *mf* *mf*

Staff 283-289: Bass clef, key of D major. Measures 283-289: eighth notes with accents, dynamics *f*, *f*, *mf*, *mf*, *mf*, *mf*, *mf*. Measure 289 ends with *dim.* and a dashed line.

290 31 32 Sans rigueur

*f* *dim.* *mf* *p* 2 4 4

Staff 290-296: Bass clef, key of D major. Measures 290-292: eighth notes with accents, dynamics *f*, *dim.*, *mf*. Measure 293: quarter note, dynamic *p*. Measures 294-296: rests, durations 2, 4, 4.

304 33 a Tempo 34 a Tempo (sans presser)

*p* *piùp* *pp* 5

Staff 304-314: Bass clef, key of D major. Measures 304-305: quarter notes, dynamics *p*, *piùp*. Measures 306-307: rests. Measures 308-310: eighth notes, dynamic *pp*. Measure 311: rest, duration 5.

315 35 36

*piùpp* 5 3 10

Staff 315-321: Bass clef, key of D major. Measures 315-316: eighth notes, dynamic *piùpp*. Measures 317-318: rests, durations 5, 3. Measures 319-321: rests, duration 10.