

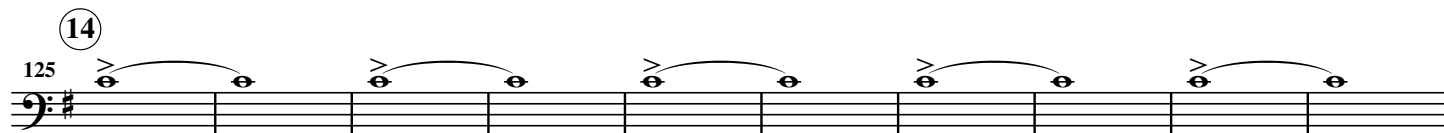
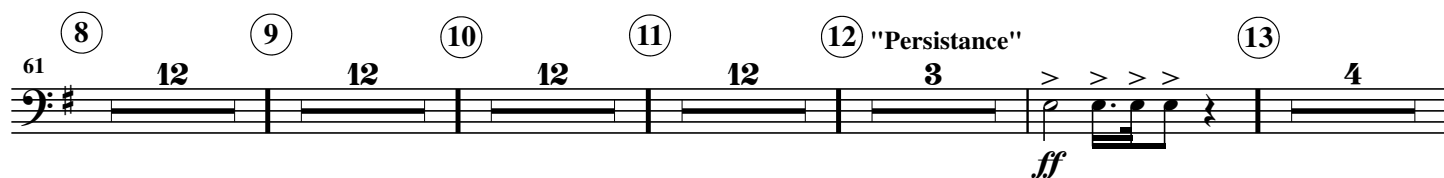
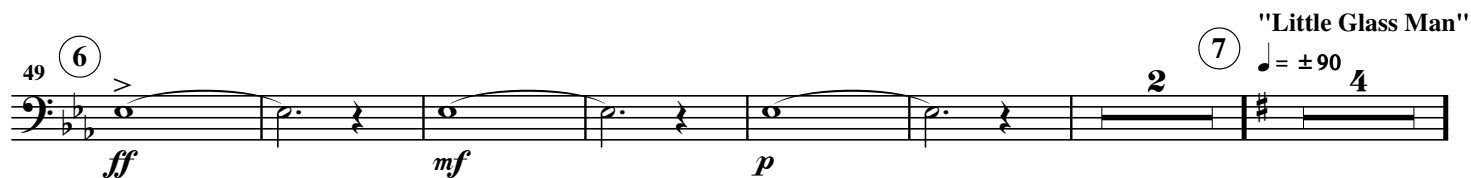
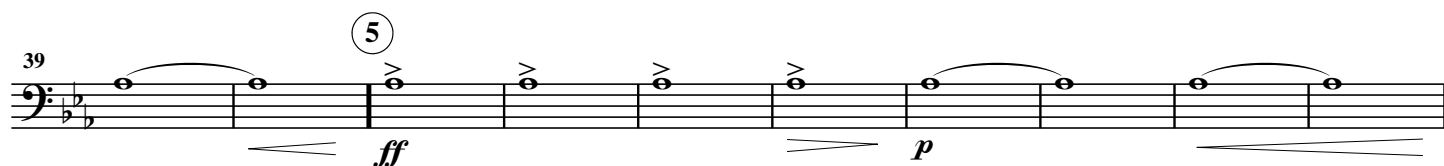
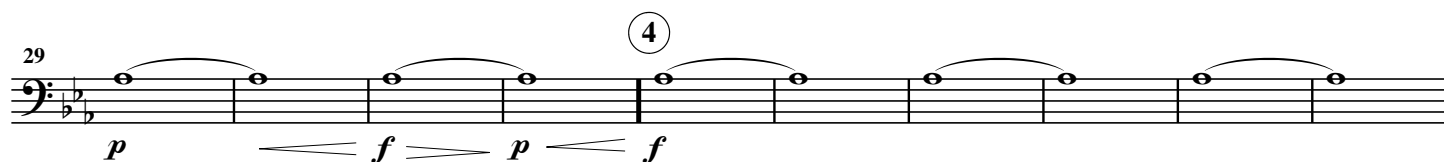
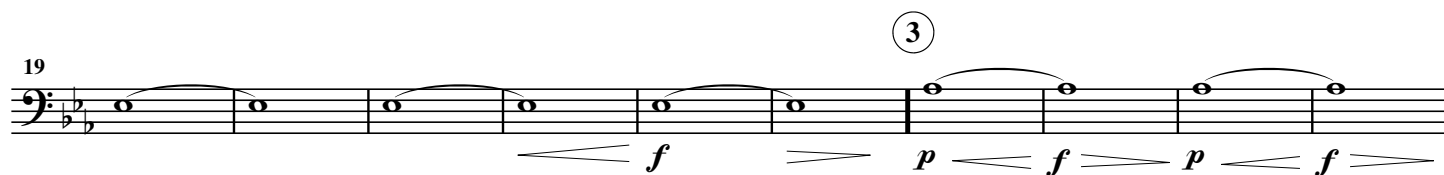
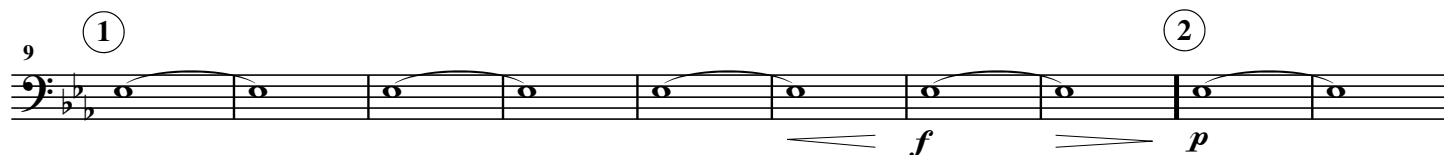
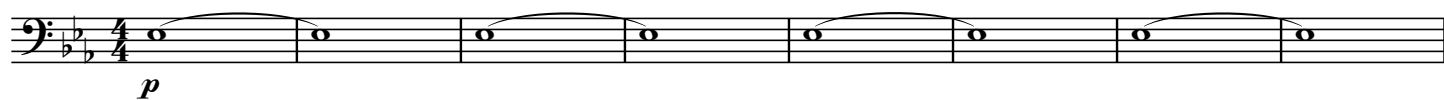
B \flat Euphonium

Glasmännchen

(Glasmännle / Little Glass Man)

Hardy MERTENS

$\text{♩} = \pm 60$ "Black forest"



146


3 3 3 3 3 3 3 3 3 3 3 3 3 3

148

mf

16

The musical score for the bass line of 'The Rose Tree' is shown. It begins at measure 148 with a treble clef and a key signature of one sharp (F#). The melody consists of eighth notes, many of which are beamed in groups of three (triplets) and marked with an accent (>). The dynamics are marked *mf* (mezzo-forte). A measure rest is indicated by a circle containing the number 16. The melody continues with eighth notes, some beamed in pairs, and a final measure with a half note.

153  Musical notation for the bass line of 'The Rose Tree'. It begins with a treble clef and a key signature of one sharp (F#). The melody starts on a half note G4, followed by a quarter note A4, and a dotted quarter note B4. A slur covers the next four notes: a half note C5, a quarter note B4, a quarter note A4, and a quarter note G4. This is followed by a half note F#4, a quarter note E4, and a dotted quarter note D4. The piece concludes with a final whole note G4.

[illegible][illegible]

172

The musical score for the bass line of 'The Rose Tree' is written on a single staff. It begins with a treble clef and a key signature of one sharp (F#). The melody consists of eighth and sixteenth notes, often beamed together. There are several triplets indicated by a '3' below the notes. The piece concludes with a double bar line.

174

^ ^

176

19 "Intimacy" $\text{♩} = \pm 60$ 12

20

21 "Freedom" $\text{♩} = \pm 120$ 6 12

pp < *mf* > *pp*

209 **(22)**

f

217

221 **(23)**

224

227

ff

232 **(24)**

mf *f*

246

250

254 **(26)**

259

264



(27)

269



274



Speed up

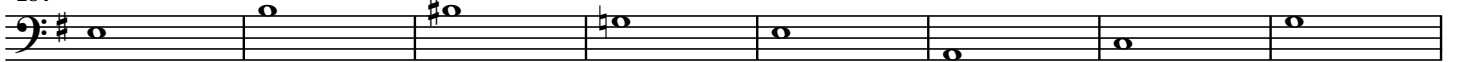
(28)

♩ = ± 150

279

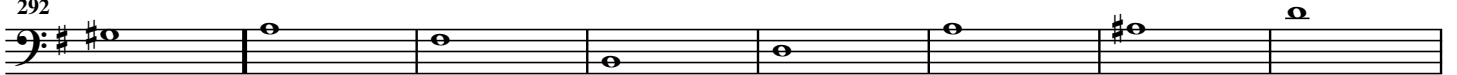


284



(29)

292

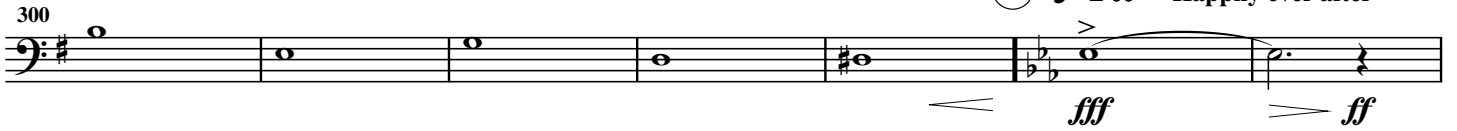


(30)

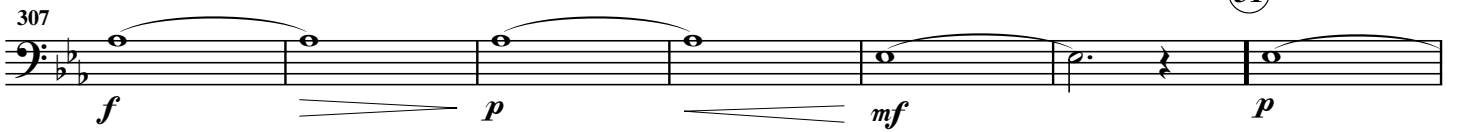
♩ = ± 60

"Happily ever after"

300



307



(31)

314

