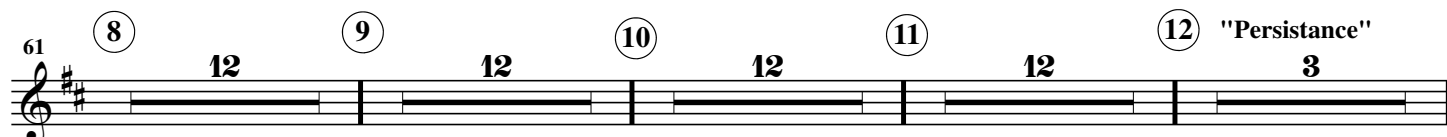
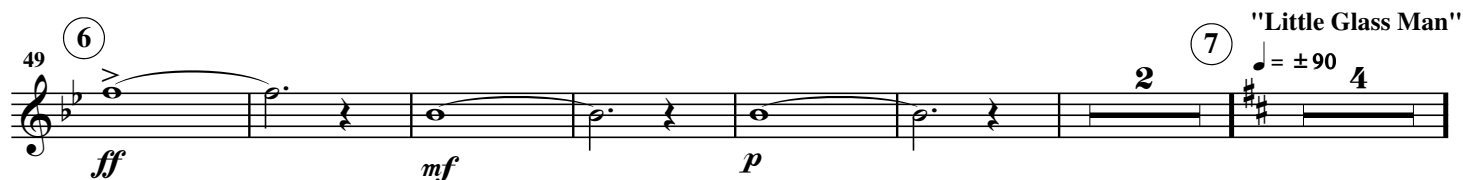
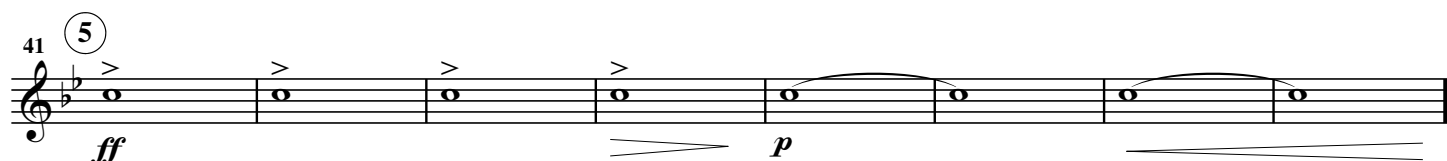
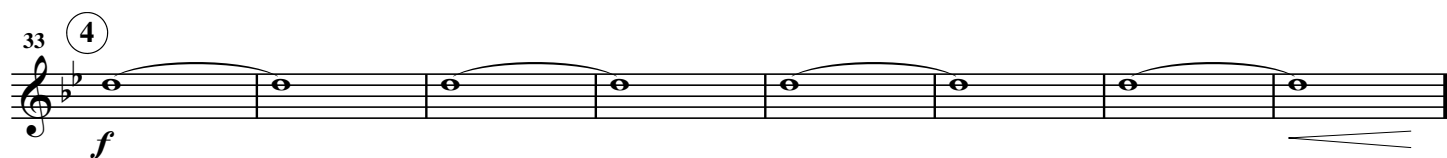
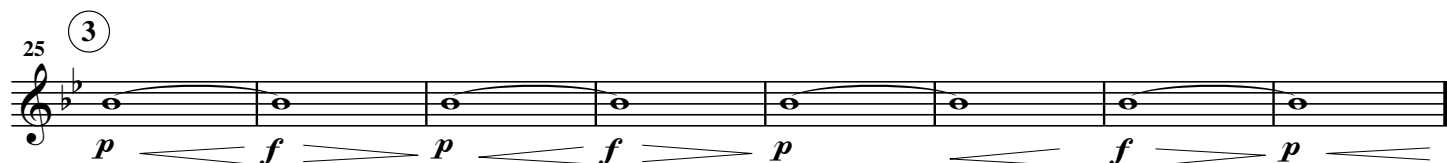
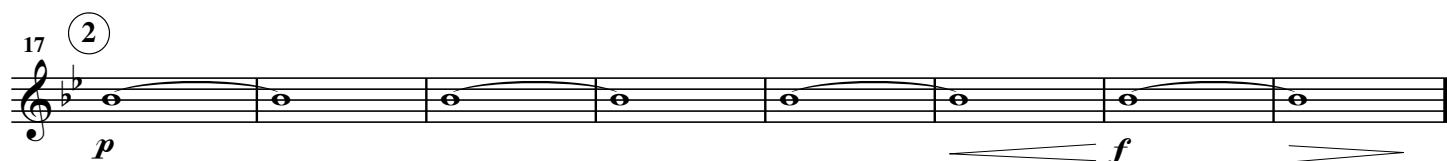
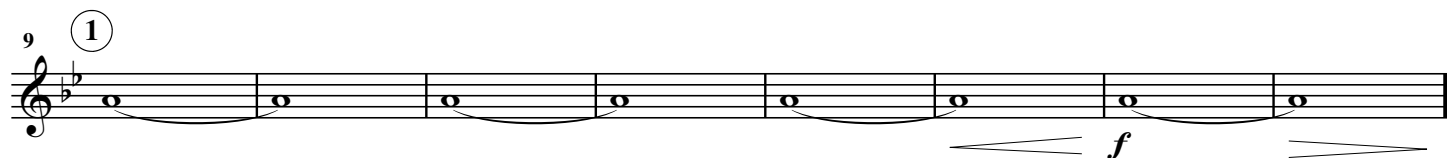
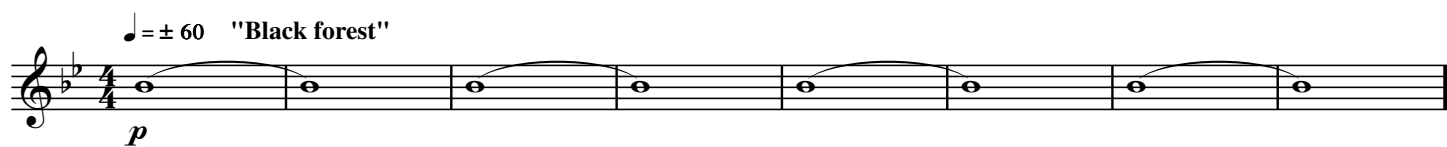


**E $\flat$  Horn 1**

# Glasmännchen

(Glasmännle / Little Glass Man)

Hardy MERTENS



112 13

ff f ff

4

Detailed description: This staff contains measures 112 to 115. Measure 112 starts with a fortissimo (ff) dynamic and features a triplet of eighth notes. Measure 113 has a four-measure rest. Measure 114 begins with a forte (f) dynamic and contains a half note. Measure 115 ends with a fortissimo (ff) dynamic and a half note.

123 14

Detailed description: This staff contains measures 123 to 126. Each measure (123, 124, 125, 126) consists of a half note with an accent (>) and a slur.

131 15

sfz-p ff<sup>3</sup>

10

Detailed description: This staff contains measures 131 to 135. Measures 131, 132, 133, and 134 each contain a half note with an accent (>) and a slur. Measure 135 has a ten-measure rest. The staff concludes with a fortissimo (ff) dynamic and a triplet of eighth notes.

149 16

mf

Detailed description: This staff contains measures 149 to 156. The music is written in a single line with various note values and slurs. The dynamic is mezzo-forte (mf).

157 17

ff

Detailed description: This staff contains measures 157 to 161. Measures 157-160 feature a half note with an accent (>) and a slur. Measure 161 begins with a fortissimo (ff) dynamic and contains a series of eighth notes with accents (^).

162

Detailed description: This staff contains measures 162 to 165. Measures 162 and 163 each contain a half note with an accent (^) and a slur. Measure 164 has a whole rest. Measure 165 contains a half note with an accent (^) and a slur.

166 18

Detailed description: This staff contains measures 166 to 169. Measures 166, 167, 168, and 169 each contain a half note with an accent (^) and a slur.

170

3

Detailed description: This staff contains measures 170 to 173. Measures 170 and 171 each contain a half note with an accent (>) and a slur. Measures 172 and 173 each contain a half note with an accent (>) and a slur.

174

Detailed description: This staff contains measures 174 to 177. Measures 174, 175, 176, and 177 each contain a half note with an accent (^) and a slur.

177 (19) ♩ = ± 60 "Intimacy" 12 (20) 8 (21) ♩ = ± 120 "Freedom" 12 (22) 2

211 *f*

217

221 (23)

224

227 *ff*

232 (24) 10 (25) *mf* *f*

248

254 (26) 12 (27) 11 Speed up

281 (28)  $\text{♩} = \pm 150$

*ff*