

## B $\flat$ Tuba 2

(Glasmännle / Little Glass Man)

♩ = ± 60 "Black forest"

[illegible]

17 **(2)**

*p* *f*

25 **3**

*p* *f* *p* *f* *p* *f* *p* *f*

33 **4**

*f*

49 **6** **7**  $\text{♩} = \pm 90$

*ff* *mf* *p* *pp* **3** "Little Glass Man"

The musical score for 'Little Glass Man' is written on a single staff. It begins with a bass clef and a key signature of two flats (B-flat and E-flat). The tempo is marked as  $\text{♩} = \pm 90$ . The score is divided into measures by bar lines. The first measure is marked with a circled '6' and a forte (*ff*) dynamic. The second measure is marked with a circled '7' and a mezzo-forte (*mf*) dynamic. The third measure is marked with a circled '7' and a piano (*p*) dynamic. The fourth measure is marked with a circled '7' and a pianissimo (*pp*) dynamic. The fifth measure is marked with a circled '7' and a circled '3', indicating a triplet. The title 'Little Glass Man' is written below the staff.

60 one 8

*sfz-p*  $\text{crescendo}$  *ff* *p*

64

67

70

73 9

76

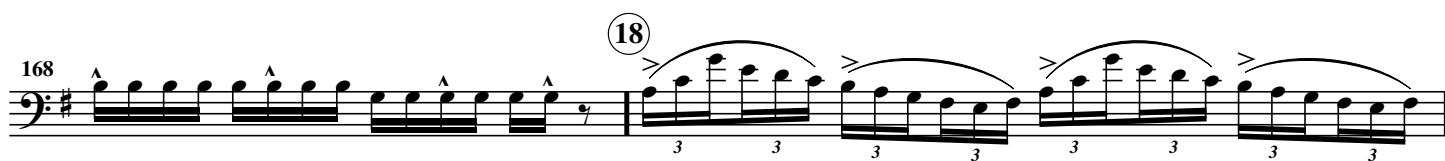
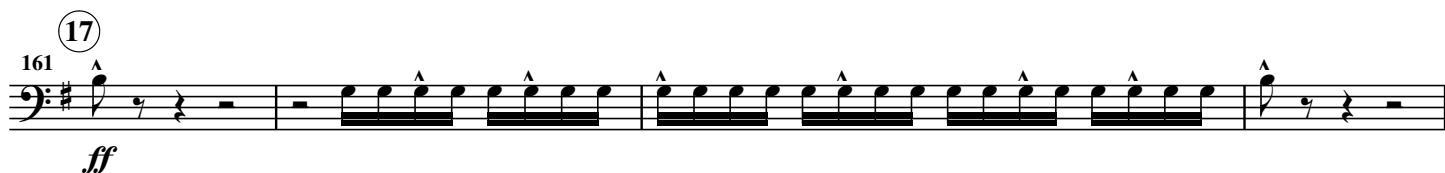
79

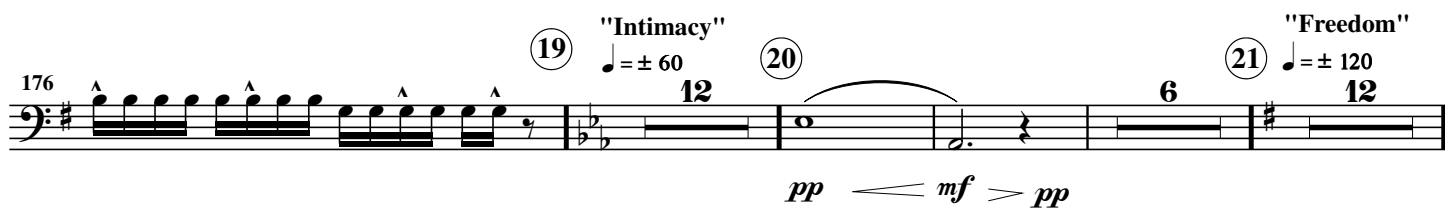
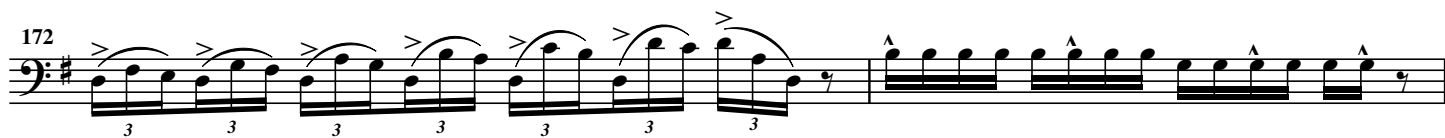
82 10

*f*

86







245 (25)

*f*

249

253

257 (26)

262

267 (27)

272

277

280 **Speed up** (28)  $\text{♩} = \pm 150$

*ff*

287 (29)

*ff*

295

*ff*

303 (30)  $\text{♩} = \pm 60$  "Happily ever after"

*ff* *ff* *f*

309 (31)

*p* *mf* *p*

315

*pp* *ppp*