

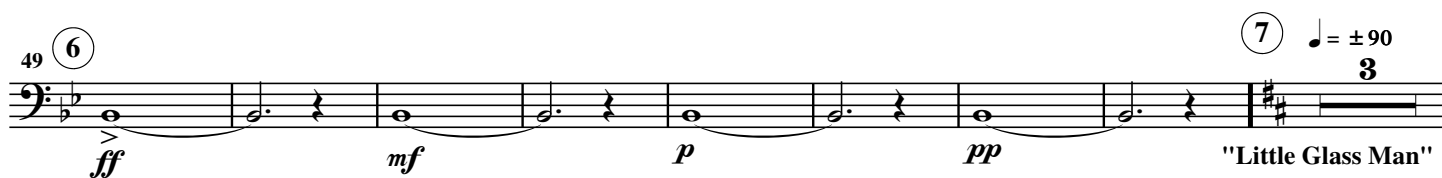
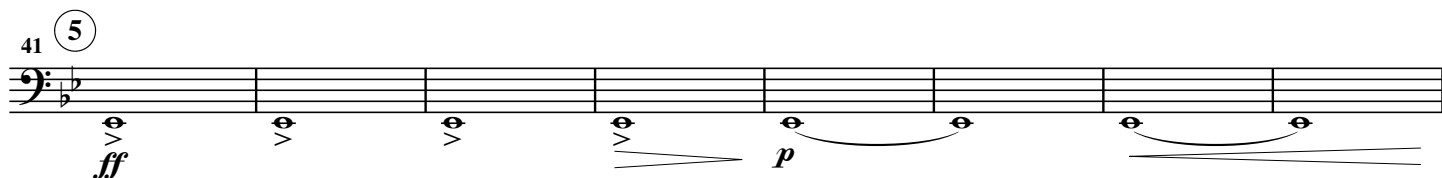
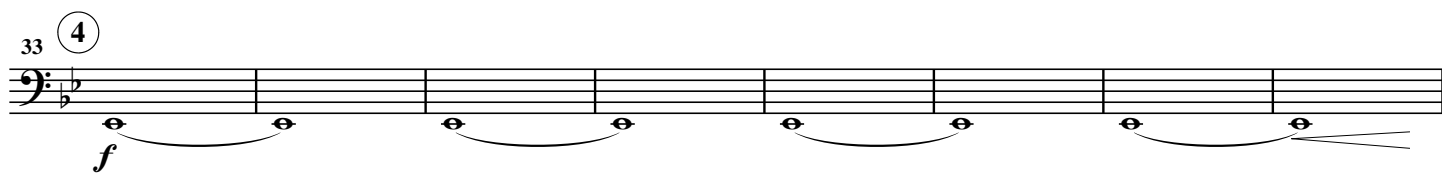
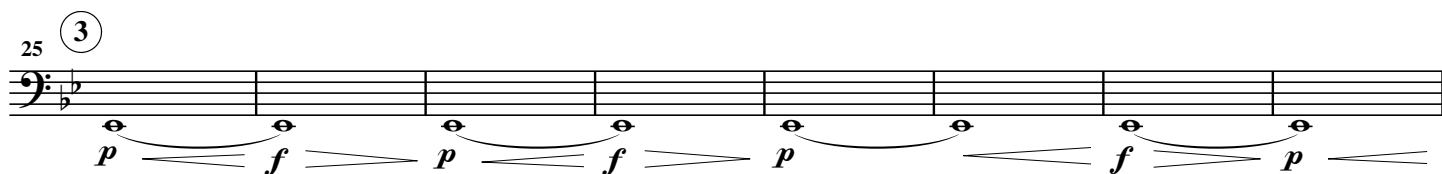
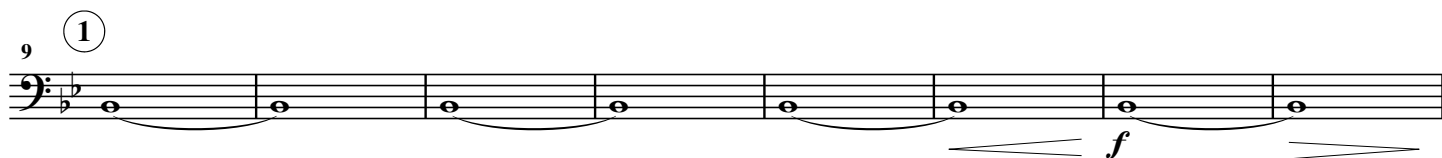
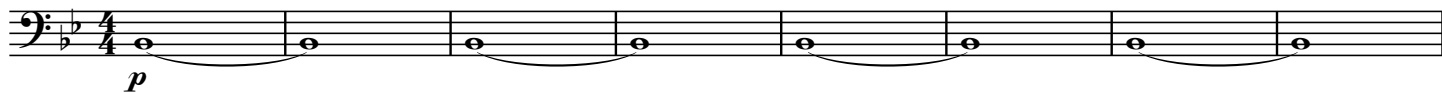
**E $\flat$  Tuba 2**

# Gasmännchen

(Gasmännle / Little Glass Man)

Hardy MERTENS

♩ =  $\pm$  60 "Black forest"



60 one 8

*sfz p* *ff* *p*

64

67

70

73 9

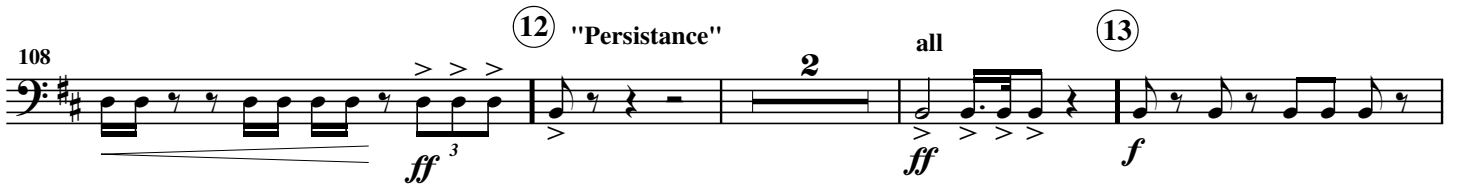
76

79

82 10

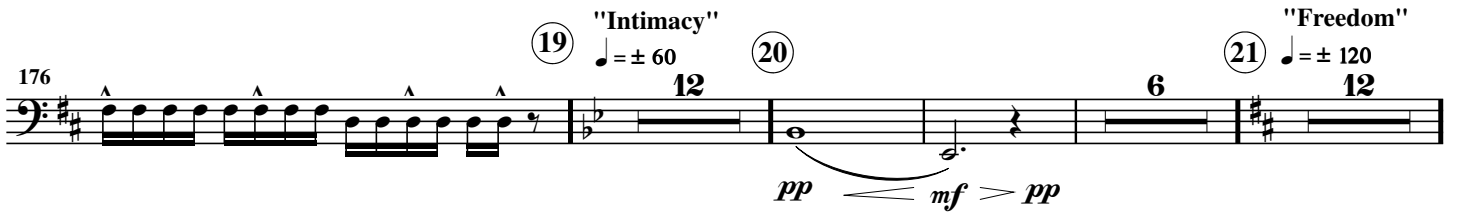
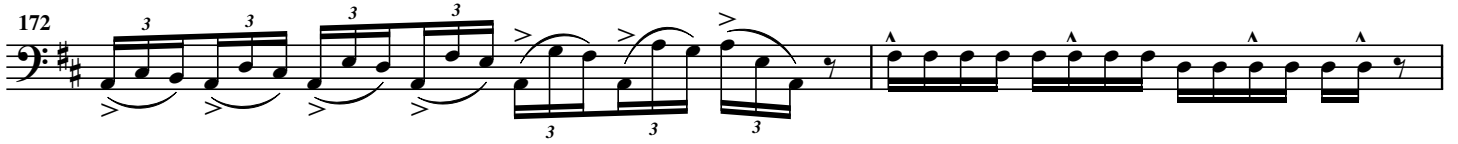
*f*

86



170

Musical score for the bass line of 'The Rose Tree'. The key signature is one sharp (F#). The score consists of two measures. The first measure contains two groups of eighth notes, each beamed in pairs and marked with a '3' above them, indicating triplets. The second measure contains two groups of eighth notes, each beamed in pairs and marked with a '3' above them, indicating triplets. The score is written on a single staff with a bass clef.



245 (25)

*f*

249

253

257 (26)

262

267 (27)

272

277

280 **Speed up** (28) ♩ = ± 150

*ff*

287 (29)

295

303 (30) ♩ = ± 60 "Happily ever after"

309 (31)

315