

B \flat Trombone 1

Glasmännchen

(Glasmännle / Little Glass Man)

Hardy MERTENS

$\text{♩} = \pm 60$ "Black forest"

1

p

11

2

f *p*

21

3

f *p* *f* *p* *f* *p*

31

4

f *p* *f*

41

5

ff *p* *ff*

6

51

7 $\text{♩} = \pm 90$ 8

mf *p* *pp* 4 12

"Little Glass Man"

73

9 10 11 12 "Persistence" 13

12 12 12 3 *ff* *f*

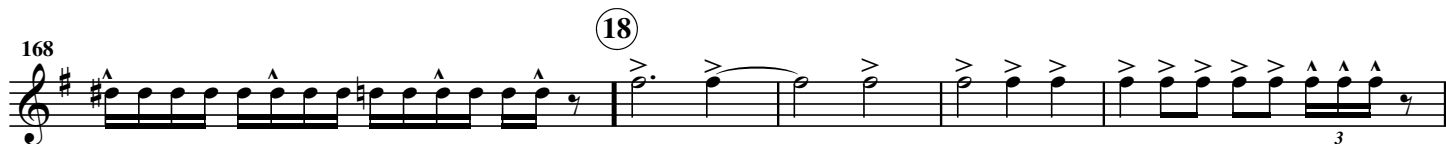
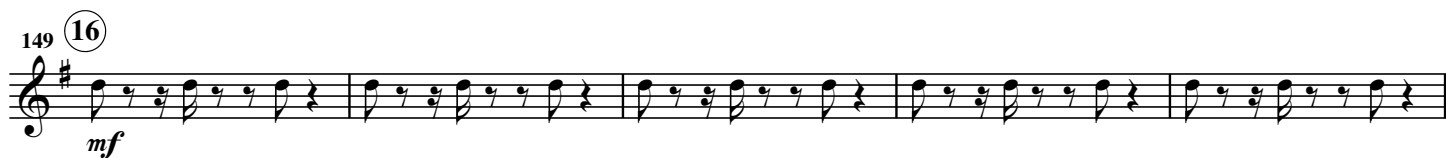
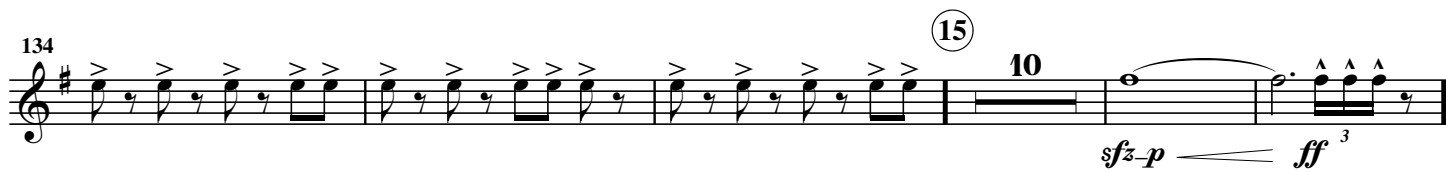
114

119

ff

124

14



189 (20) $\text{♩} = \pm 120$ (21) (22)

pp mf *pp* 6 12 "Freedom" *f*

213

219 (23)

222

225

228 (24) 4

ff

237 (25) 7

mf *f*

249

255 (26)

