

# Variazioni Sinfoniche

Hardy MERTENS

su "Non Potho Reposare"

B $\flat$  Bass

The musical score for B $\flat$  Bass consists of 16 variations, each with a specific tempo and dynamic marking. The variations are numbered 1 through 16, with some variations having multiple measures indicated by numbers above the staff.

- 1 Allegro** (9 measures)
- 2** (8 measures)
- 3** (7 measures)
- 4 Andante** (11 measures)
- 5** (8 measures)
- 6** (11 measures, ending with a double bar line and repeat sign)
- 7** (8 measures)
- 8** (8 measures, starting with a key signature change to D major)
- 9 Allegro** (7 measures, starting with a key signature change to D major)
- 10** (9 measures)
- 11** (10 measures)
- 12** (7 measures, starting with a key signature change to D major)
- 13** (2 measures)
- 14** (8 measures)
- 15** (8 measures)
- 16 Andante** (11 measures, starting with a key signature change to D major)

Dynamics and other markings include *ff*, *pp*, *f*, *p*, *mf*, *mp*, and *ff*. The score also includes various musical notations such as rests, slurs, and accents.

2.

17

156

*ff*

*fff*

18 Lo stesso tempo

19

20

163

21

195

*ff*

202

*p*

22 Solo

210

*ff*

*mf*

*ff*

23 Allegro

214

5

3

Tutti

*ff*

3

24

225

*ff*

3

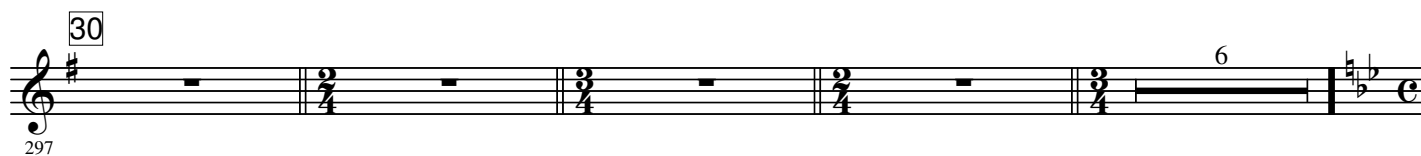
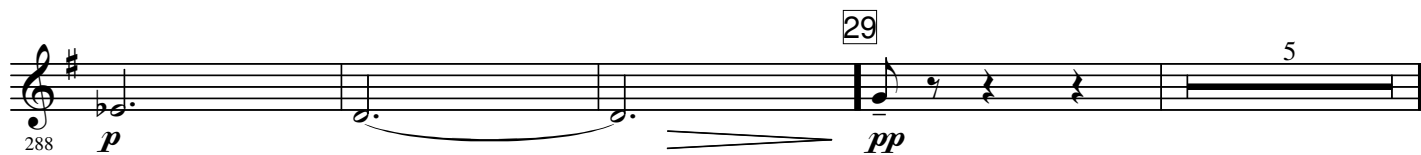
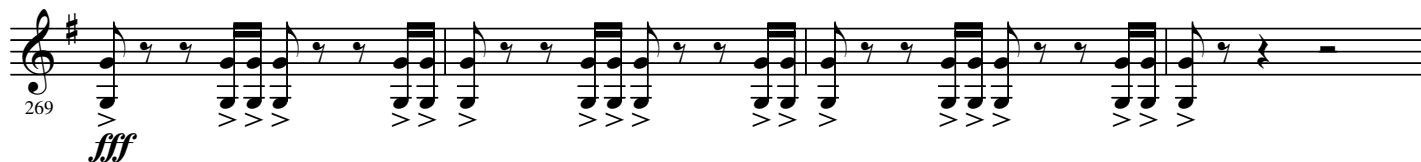
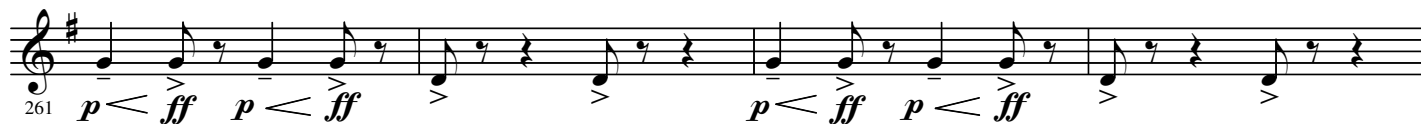
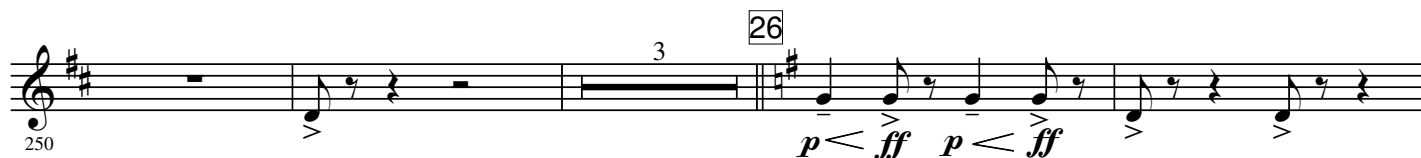
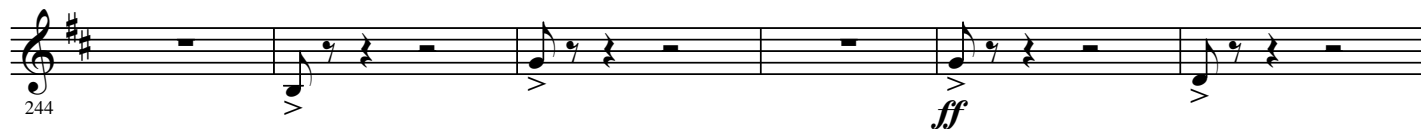
232

236

240

25

*ff*



4.

31

307

Staff 307-312: Treble clef, B $\flat$  major key signature, common time. Six measures of half notes with bar lines. Dynamics: *p*, *mf*, *p*, *mf*.

313

Staff 313-318: Treble clef, B $\flat$  major key signature, common time. Six measures of half notes with bar lines. Dynamics: *p*, *mf*, *p*, *mf*.

32

319

Staff 319-324: Treble clef, B $\flat$  major key signature, common time. Measures 319-321: half notes. Measure 322: 3/4 time signature change, quarter note. Measures 323-324: quarter notes. Dynamics: *p*, *ff*, *mf*.

325

Staff 325-331: Treble clef, B $\flat$  major key signature, common time. Measures 325-326: half notes. Measure 327: quarter note. Measures 328-329: eighth notes. Measure 330: quarter note. Measure 331: half note. Dynamics: *ff*, *mf*, *ff*.

332

Staff 332-338: Treble clef, B $\flat$  major key signature, common time. Measures 332-333: half notes. Measures 334-335: quarter notes. Measures 336-337: half notes. Measure 338: half note. Dynamics: *mf*, *p*.

33

Allegro

339

Div.

Staff 339-342: Treble clef, A major key signature, 9/8 time. Measures 339-340: quarter notes. Measures 341-342: quarter notes. Dynamics: *pp*, *mf*.

34

343

Staff 343-345: Treble clef, A major key signature, 9/8 time. Measures 343-344: quarter notes. Measure 345: quarter note. Dynamics: *p*.

346

Staff 346-348: Treble clef, A major key signature, 12/8 time. Measures 346-347: quarter notes. Measure 348: quarter note.

349

Staff 349-351: Treble clef, A major key signature, 12/8 time. Measures 349-350: quarter notes. Measure 351: quarter note.

352

355

358

362

366

370

373

376

379

6.

38

387 *ff*

391

395

399

39 Andante

403 *fff*

40

410

41

418

*f* *mp* *pp*

42

425

4 10

43 Concert pitch humming

439 *pp*

3

445

3

