

# Variazioni Sinfoniche

Hardy MERTENS

su "Non Potho Reposare"

## 1st B $\flat$ Trombone

Andante 9 1 Allegro 9 2 8

3 7 4 Andante 11 5 8

27

6 11

53 *ff* *pp*

7 8 8

69 *f* *p* *ff* *p* *ff* *p* *ff*

83 9 Allegro *pp*

89 9 10 10 11 7

115 12 *mf* *mf*

119 13 2 8 14 *p*

131 *mp* *f* *ff* *p* *pp*

135 15 8 16 Andante 11

*f* *ff* *p* *mf*

- 1st B♭ Trombone -

2.

156 **ff** **fff**

163 18 Lo stesso tempo 19 8 20 15 21 **f** **ff**

197

204 **p** **ff**

211 22 **p** 23 Allegro 6 2 **ff** 3 3

222 3 3 **ff** 3 3

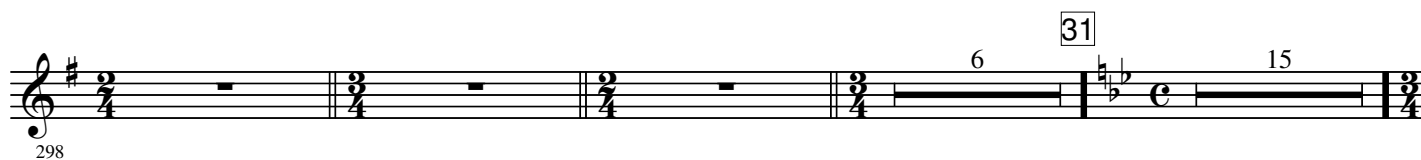
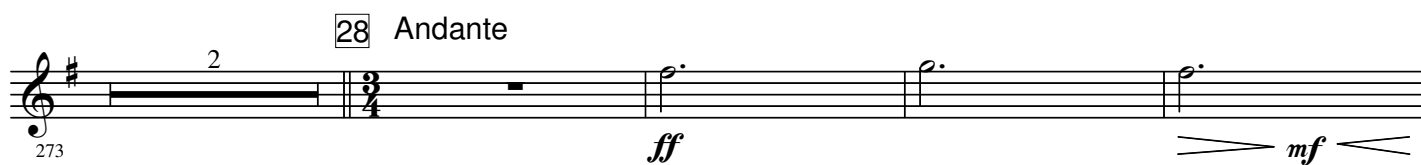
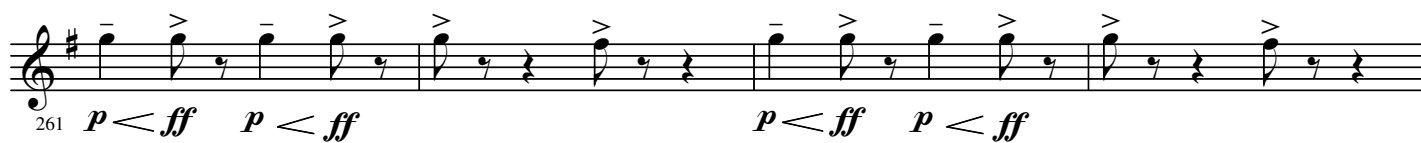
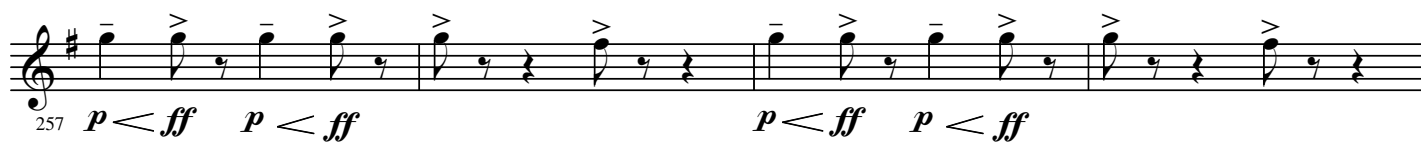
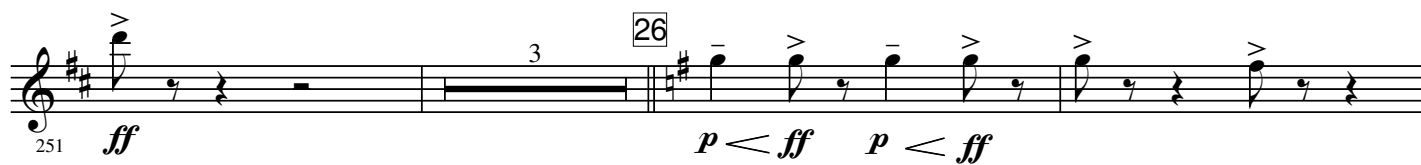
228 3 3 24

233

237 25 **sfz-p**

245 **ff** 3 **sfz-p** **ff** 3 **sfz-p**

Detailed description of the musical score: The score is for the 1st B♭ Trombone part, spanning measures 156 to 245. It begins with a forte (ff) dynamic and a crescendo leading to fortissimo (fff) in measure 156. Measures 163-164 are marked 'Lo stesso tempo' with a tempo change. Measures 165-166 show a crescendo from f to ff. Measures 167-174 are marked 'p' (piano). Measures 175-176 are marked 'ff' (fortissimo). Measures 177-178 are marked 'p' (piano). Measures 179-180 are marked 'ff' (fortissimo). Measures 181-182 are marked 'p' (piano). Measures 183-184 are marked 'ff' (fortissimo). Measures 185-186 are marked 'p' (piano). Measures 187-188 are marked 'ff' (fortissimo). Measures 189-190 are marked 'p' (piano). Measures 191-192 are marked 'ff' (fortissimo). Measures 193-194 are marked 'p' (piano). Measures 195-196 are marked 'ff' (fortissimo). Measures 197-198 are marked 'p' (piano). Measures 199-200 are marked 'ff' (fortissimo). Measures 201-202 are marked 'p' (piano). Measures 203-204 are marked 'ff' (fortissimo). Measures 205-206 are marked 'p' (piano). Measures 207-208 are marked 'ff' (fortissimo). Measures 209-210 are marked 'p' (piano). Measures 211-212 are marked 'ff' (fortissimo). Measures 213-214 are marked 'p' (piano). Measures 215-216 are marked 'ff' (fortissimo). Measures 217-218 are marked 'p' (piano). Measures 219-220 are marked 'ff' (fortissimo). Measures 221-222 are marked 'p' (piano). Measures 223-224 are marked 'ff' (fortissimo). Measures 225-226 are marked 'p' (piano). Measures 227-228 are marked 'ff' (fortissimo). Measures 229-230 are marked 'p' (piano). Measures 231-232 are marked 'ff' (fortissimo). Measures 233-234 are marked 'p' (piano). Measures 235-236 are marked 'ff' (fortissimo). Measures 237-238 are marked 'p' (piano). Measures 239-240 are marked 'ff' (fortissimo). Measures 241-242 are marked 'p' (piano). Measures 243-244 are marked 'ff' (fortissimo). Measures 245-246 are marked 'p' (piano).



- 1st B♭ Trombone -

4.

322 **ff** **mf** **ff** **mf** **ff**

330 **mf** **p**

339 **pp** **mf** **Mute**

344 **p**

348

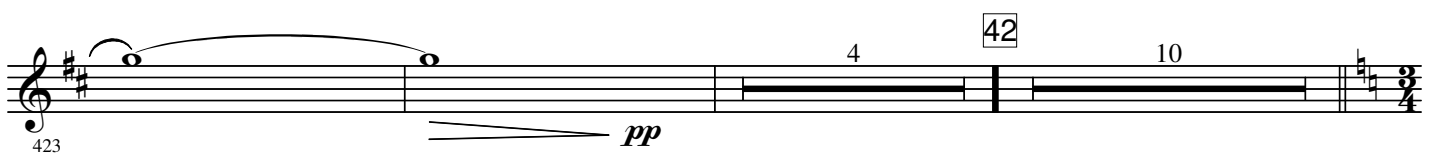
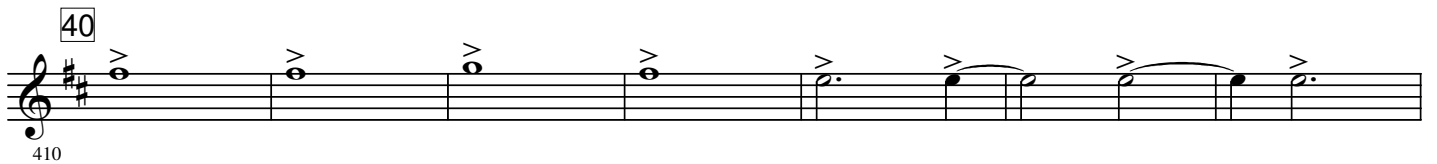
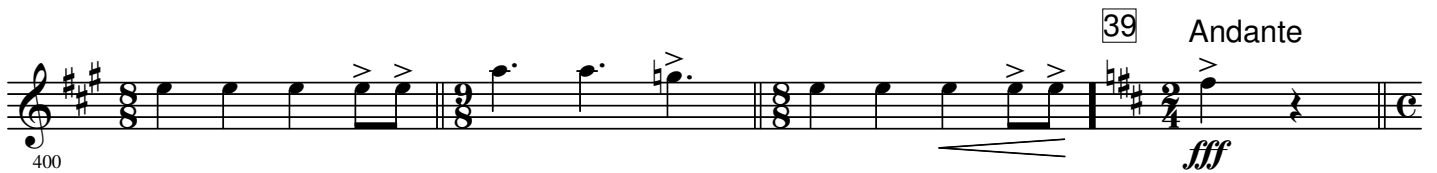
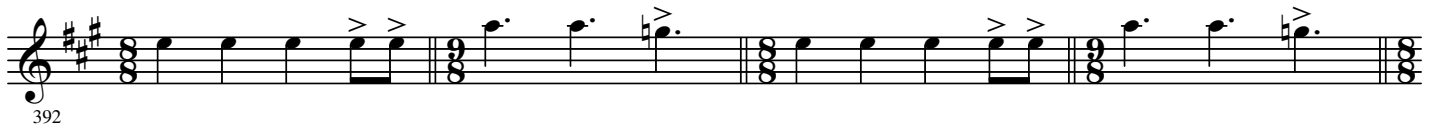
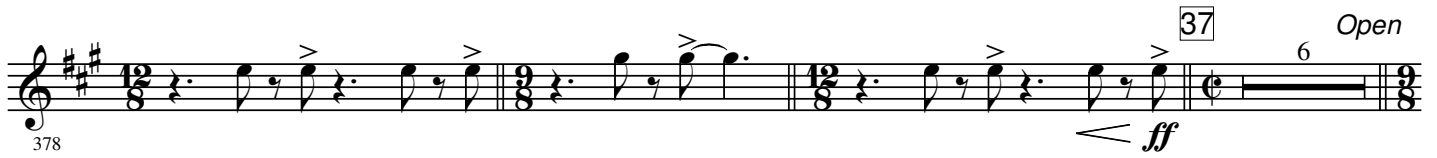
352

356 **35**

361

366 **36**

370



- 1st B $\flat$  Trombone -

6.

43 Concert pitch humming

439 *pp*

445

451

Play / Stand 2

44 Moderato

*mf*

457

*f* *mf* *f*

463

*mf* *f* *mf*

469

*f* *f* *p* *fff*

479

*fff*

48 Andante

*rit.*

491

A tempo

49

7

Detailed description of the musical score: The score is for the 1st B $\flat$  Trombone part, measures 43 through 49. Measure 43 starts with a treble clef and a 3/4 time signature. It contains a triplet of eighth notes (G4, A4, B4) followed by a half note (C5). Measure 44 continues with a half note (D5), a quarter note (E5), and a triplet of eighth notes (F5, G5, A5). Measure 45 has a half note (B5), a quarter note (C6), and a triplet of eighth notes (D6, E6, F6). Measure 46 begins with a 'Play / Stand' instruction and a 2-measure rest, followed by a half note (G5) and a quarter note (F5). Measure 47 continues with a half note (E5), a quarter note (D5), and a half note (C5). Measure 48 has a half note (B4), a quarter note (A4), and a half note (G4). Measure 49 starts with a half note (F4), a quarter note (E4), and a half note (D4). The score includes various dynamic markings: *pp* (pianissimo) at measure 43, *mf* (mezzo-forte) at measures 44, 45, 46, and 47, *f* (forte) at measures 45, 46, and 47, *p* (piano) at measure 46, *fff* (fortissimo) at measure 46, and *rit.* (ritardando) at measure 48. There are also performance instructions: 'Concert pitch humming' at measure 43, 'Moderato' at measure 44, 'Andante' at measure 48, and 'A tempo' at measure 49. The score includes several triplets and a 7-measure rest at the end of measure 49.