

Variazioni Sinfoniche

Hardy MERTENS

su "Non Potho Reposare"

E♭ Bass

Andante 9 1 Allegro 9 2 8

3 7 4 Andante 11 5 8

27

6 53 *ff* *pp* 11 //

7 8 8 *f* *p* < *ff* *p* < *ff* *p* < *ff* 69

9 Allegro 83 *pp*

9 10 10 11 7 89

12 115 *mf* *ff* *mf*

13 2 8 14 *p* 119

131 *mp* *mf* *ff* *p* *mp*

15 8 16 Andante 11 135 *mf* *ff* *p* *ff*

2.

17

156

ff

fff

18 Lo stesso tempo

8

19

8

20

16

163

21

195

ff

202

p

22 Solo

210

ff

mf

ff

23 Allegro

5

3

Tutti

214

ff

24

225

ff

232

236

3

3

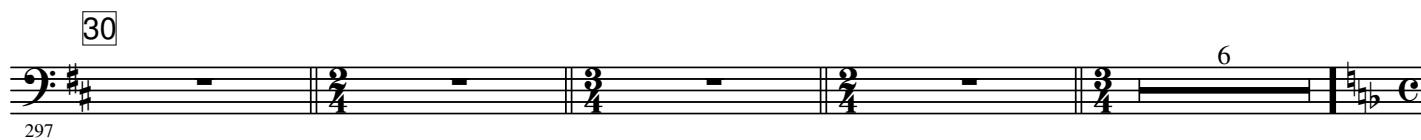
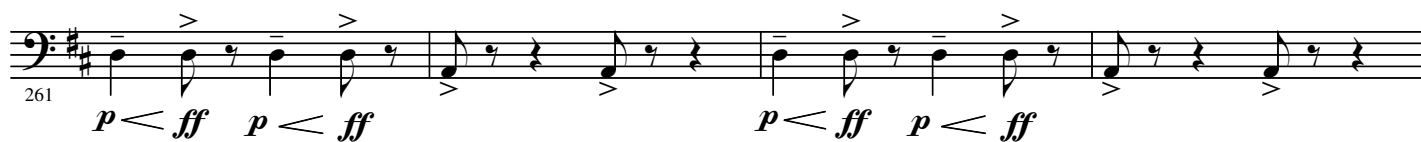
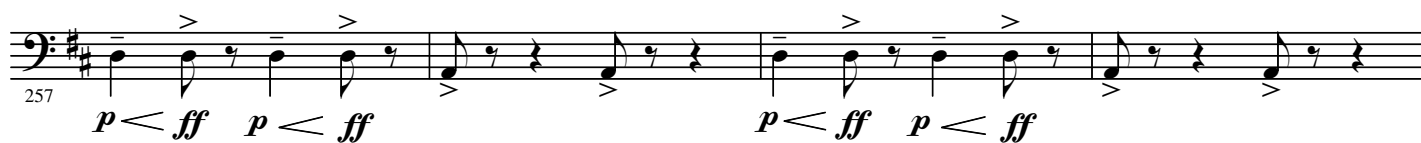
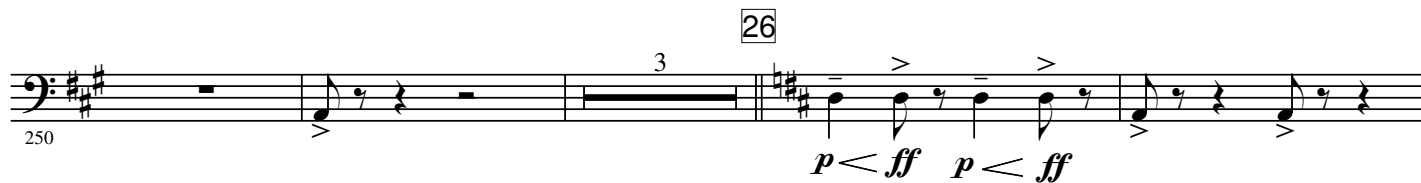
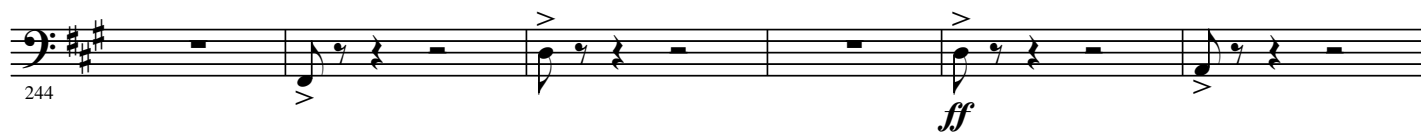
3

25

240

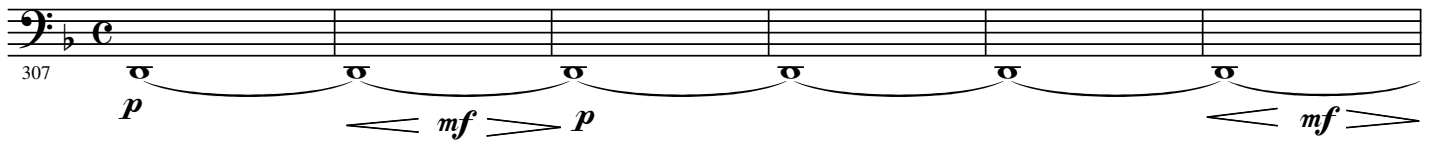
ff

Detailed description of the musical score: The score is for an E♭ Bass part, spanning measures 156 to 240. It begins with measure 17, marked with a box number. The key signature has one sharp (F#). Measures 156-162 contain a melodic line with accents and slurs, starting with a forte (ff) dynamic and building to fortissimo (fff). Measure 163 starts a section marked 'Lo stesso tempo' (same tempo), with measures 163-170 consisting of whole rests. Measure 171 (boxed 18) continues the rest. Measure 172 (boxed 19) continues the rest. Measure 173 (boxed 20) continues the rest. Measure 174 (boxed 21) continues the rest. Measure 175 (boxed 22) is marked 'Solo' and begins a melodic line with accents and slurs, starting with ff, moving to mf, and then back to ff. Measure 176 (boxed 23) is marked 'Allegro' and begins a triplet of eighth notes, followed by a rest. Measure 177 (boxed 24) continues the triplet. Measure 178 (boxed 25) continues the triplet. Measure 179 (boxed 26) continues the triplet. Measure 180 (boxed 27) continues the triplet. Measure 181 (boxed 28) continues the triplet. Measure 182 (boxed 29) continues the triplet. Measure 183 (boxed 30) continues the triplet. Measure 184 (boxed 31) continues the triplet. Measure 185 (boxed 32) continues the triplet. Measure 186 (boxed 33) continues the triplet. Measure 187 (boxed 34) continues the triplet. Measure 188 (boxed 35) continues the triplet. Measure 189 (boxed 36) continues the triplet. Measure 190 (boxed 37) continues the triplet. Measure 191 (boxed 38) continues the triplet. Measure 192 (boxed 39) continues the triplet. Measure 193 (boxed 40) continues the triplet. Measure 194 (boxed 41) continues the triplet. Measure 195 (boxed 42) continues the triplet. Measure 196 (boxed 43) continues the triplet. Measure 197 (boxed 44) continues the triplet. Measure 198 (boxed 45) continues the triplet. Measure 199 (boxed 46) continues the triplet. Measure 200 (boxed 47) continues the triplet. Measure 201 (boxed 48) continues the triplet. Measure 202 (boxed 49) continues the triplet. Measure 203 (boxed 50) continues the triplet. Measure 204 (boxed 51) continues the triplet. Measure 205 (boxed 52) continues the triplet. Measure 206 (boxed 53) continues the triplet. Measure 207 (boxed 54) continues the triplet. Measure 208 (boxed 55) continues the triplet. Measure 209 (boxed 56) continues the triplet. Measure 210 (boxed 57) continues the triplet. Measure 211 (boxed 58) continues the triplet. Measure 212 (boxed 59) continues the triplet. Measure 213 (boxed 60) continues the triplet. Measure 214 (boxed 61) continues the triplet. Measure 215 (boxed 62) continues the triplet. Measure 216 (boxed 63) continues the triplet. Measure 217 (boxed 64) continues the triplet. Measure 218 (boxed 65) continues the triplet. Measure 219 (boxed 66) continues the triplet. Measure 220 (boxed 67) continues the triplet. Measure 221 (boxed 68) continues the triplet. Measure 222 (boxed 69) continues the triplet. Measure 223 (boxed 70) continues the triplet. Measure 224 (boxed 71) continues the triplet. Measure 225 (boxed 72) continues the triplet. Measure 226 (boxed 73) continues the triplet. Measure 227 (boxed 74) continues the triplet. Measure 228 (boxed 75) continues the triplet. Measure 229 (boxed 76) continues the triplet. Measure 230 (boxed 77) continues the triplet. Measure 231 (boxed 78) continues the triplet. Measure 232 (boxed 79) continues the triplet. Measure 233 (boxed 80) continues the triplet. Measure 234 (boxed 81) continues the triplet. Measure 235 (boxed 82) continues the triplet. Measure 236 (boxed 83) continues the triplet. Measure 237 (boxed 84) continues the triplet. Measure 238 (boxed 85) continues the triplet. Measure 239 (boxed 86) continues the triplet. Measure 240 (boxed 87) continues the triplet.

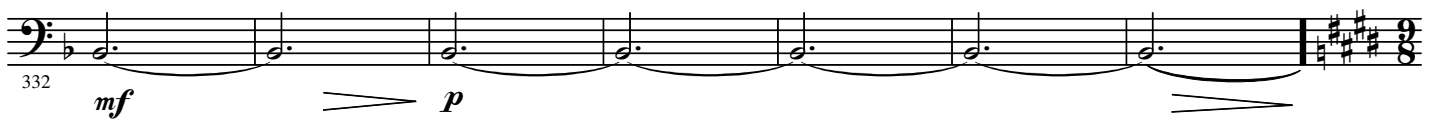
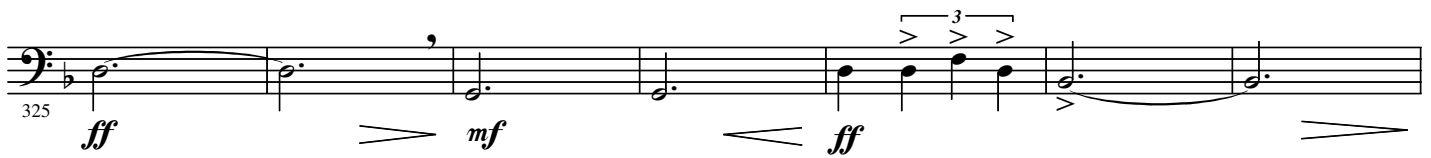
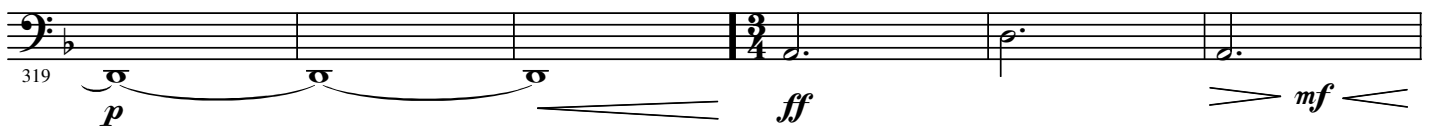


4.

31



32



33 Allegro

Div.



34



352

The image shows a musical score for the bass line of the song 'The Rose Tree'. The score is written on a single staff with a bass clef and a key signature of three sharps (F#, C#, G#). The tempo is marked 'Allegretto' and the time signature is 12/8. The music consists of a series of eighth and sixteenth notes, with some measures containing rests. The score is divided into four measures by double bar lines. The first measure is 12/8, the second is 9/8, the third is 12/8, and the fourth is 9/8. The number '352' is written below the first measure.

355

35

358

362

366

36

12

370

The musical score for the bass line of 'The Rose Tree' is written in bass clef with a key signature of three sharps (F#, C#, G#). The piece is in 12/8 time. The notation includes eighth and sixteenth notes, rests, and repeat signs. The score is divided into four measures, with the first measure starting at measure 370. The first measure contains a half note G2, a quarter note F#2, and a quarter rest. The second measure contains a half note E2, a quarter note D2, and a quarter rest. The third measure contains a half note C2, a quarter note B1, and a quarter rest. The fourth measure contains a half note A1, a quarter note G1, and a quarter rest. The score ends with a double bar line.

376

6.

38



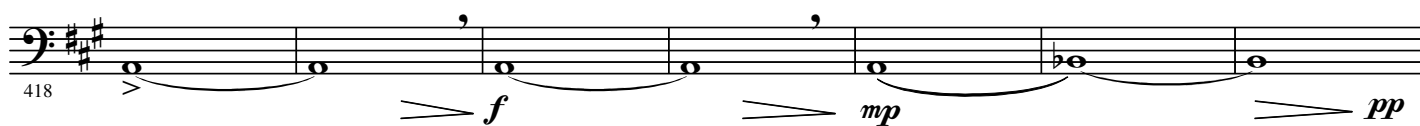
39 Andante



40



41



42



43 Concert pitch humming



44 Moderato 8

451

45 8 Play 46 6

463

fff

47 3 48 Andante 6

479

fff

rit.

(Sit) 3 A tempo 49 6

491

fff

ff