

# Variazioni Sinfoniche

Hardy MERTENS

su "Non Potho Reposare"

## 2nd B $\flat$ Euphonium

Andante 9 1 Allegro 9 2 8

3 7 4 Andante 11 5 8

6 53 *ff* *pp* 11 //

7 8 8 *f* *p* *ff* *p* *ff* *p*

81 *ff* 3 3 3 3 3 3 3 3

9 Allegro 9 *pp*

10 10 11 7 12 *mf*

118 *mf* 2 13 7 *ff*

14 130 *p* *ff* *p* 3 3 3 3

134 3 3 3 3 3 3 *ff* *p* *ff* 15 8

- 2nd B♭ Euphonium -

2.

16 Andante 17

11

145

*ff*

*fff*

18 Lo stesso tempo

2 Solo

163

*mf*

*ff*

19

169

*mf*

*ff*

173

*mf*

*ff*

20 Tutti

177

*mf*

*ff*

*f*

181

*ff*

*f*

*ff*

187

*f*

*ff*

*f*

21

193

*ff*

*ff*

199

205

*p*

*ff*

22 23 Allegro

211 8 3 *ff* 3

228 3 3

233

238 3 3 3

242 25 *ff*

247 *ff* 3

255 26 *p < ff p < ff p < ff p < ff*

260 *p < ff p < ff p < ff p < ff*

265 27

269 *fff* 2

Detailed description of the musical score: The score is for a 2nd B♭ Euphonium part. It begins at measure 211 with a rest for 8 measures, followed by a triplet of eighth notes marked *ff*. Measure 223 contains a triplet of eighth notes. Measure 233 is a whole note. Measure 238 contains three triplets of eighth notes. Measure 242 contains two triplets of eighth notes, followed by a rest. Measure 247 contains a triplet of eighth notes. Measure 255 contains a series of eighth notes with dynamic markings *p < ff*. Measure 260 continues the eighth note pattern with *p < ff* markings. Measure 265 contains eighth notes with *p < ff* markings. Measure 269 begins with a triplet of eighth notes marked *fff*, followed by a rest for 2 measures. The piece ends at measure 271 with a final double bar line and a 3/4 time signature.

4.

**28 Andante**

275 *ff* *mf* *ff*

281 *mf* *ff* *mf*

287 *p* *pp*

298 *ff*

323 *mf* *ff* *mf*

329 *ff* *mf* *p*

**33 Allegro**

336 *p* *pp*

**34**

341

349

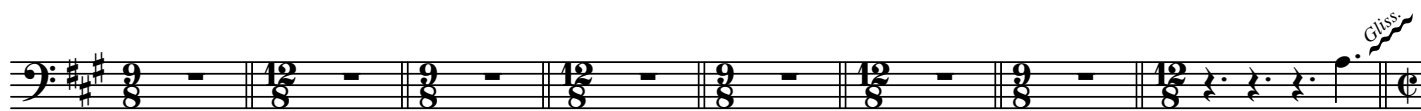
**35**

357

36



365



373

*mf* <



381

*ff*

*mf* < *ff*

*mf* <



387

*ff*



391



395



399

*mf*

Andante



403

*fff*



410



418

*f*

*mp*

*pp*

4

- 2nd B $\flat$  Euphonium -

6.

42 10 43 Concert pitch humming *pp* 3

44 Moderato 8

45 Play / Stand *mf* *f* *mf*

46 *f* *p* *fff* 6

47 *fff* 3 48 Andante 5

49 Ritenuto A tempo *fff* 7

429 434 450 463 469 479 490

cresc.