

Variazioni Sinfoniche

Hardy MERTENS

su "Non Potho Reposare"

3rd E \flat Horn

Andante 9 1 Allegro 9 2 8

3 7 4 Andante 11 5 8

27

6 11 ff pp

53

7 8 8 f p < ff p < ff p < ff

69

9 Allegro 9 pp

83

10 10 11 7 12 3 3 mf ff 3

98

118 3 3 mf ff 3 2 13 8 14 p

131 mp f ff p pp f ff p mf

15 8 16 Andante 11 17 ff

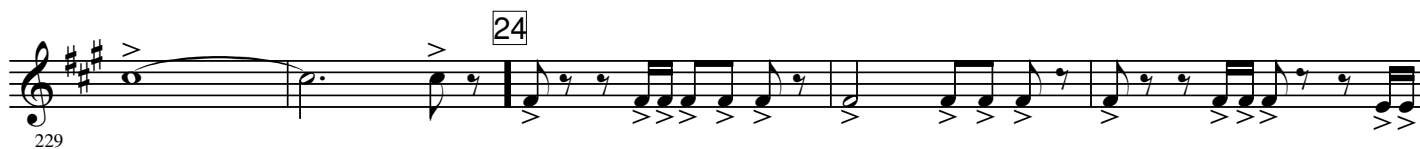
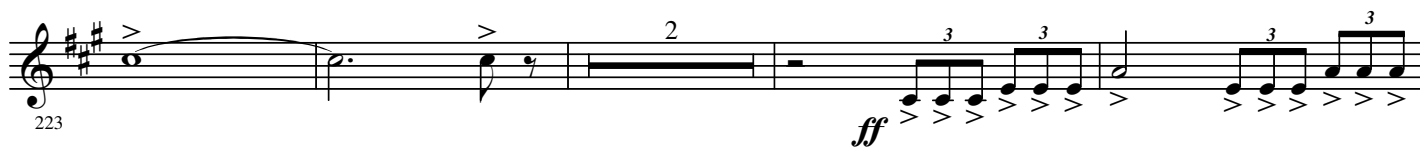
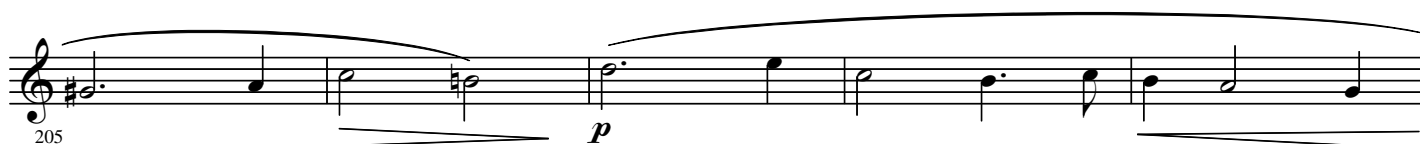
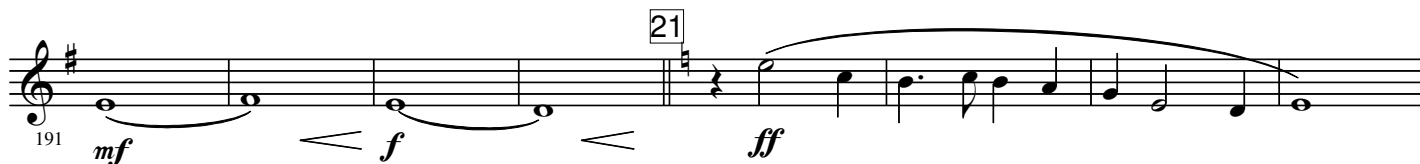
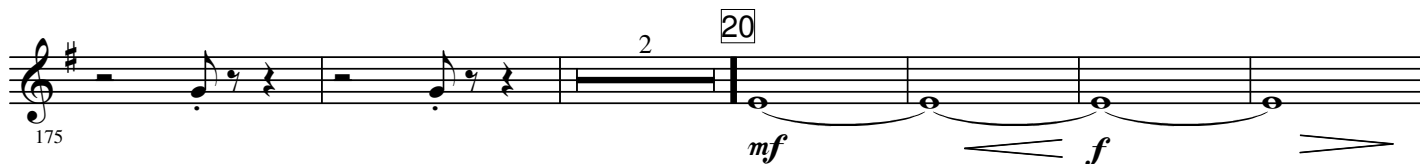
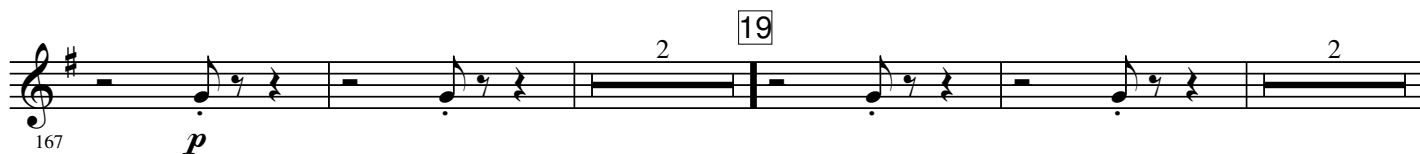
137

18 Lo stesso tempo 2 p

160

- 3rd E♭ Horn -

2.



238

Bell Up 3

25

sfz-p *ff*

246

sfz-p *ff* *sfz-p* *ff*

Down

252

3

26

p < ff *p < ff* *p < ff* *p < ff*

259

p < ff *p < ff* *p < ff* *p < ff*

263

p < ff *p < ff* *p < ff* *p < ff*

267

27

fff

271

28

Andante

2

ff *> mf <*

279

ff *> mf* *< ff* *>*

286

29

mf *p* *pp* 5

30

31

6 15

297

- 3rd E \flat Horn -

4.

32

322 *ff* *mf* *ff* *mf*

329 *ff* *mf* *p*

336 *pp* **33** Allegro

340 **34**

346 **35**

352 **36**

358

364

370

376 Bell Up *mf* Gliss.

381 **37** *tr* *ff* *mf* *ff* *mf* *Gloss* *Down* *3*

387 **38** *ff*

390

393

396

399

402 **39** *Andante* *Bell Up* *fff*

406

410 **40**

415 **41** *Down* **42** 10 10

6.

43 Concert pitch humming

439 *pp*

445

44 Moderato 8

45 Play

463 *mf* *f* *mf*

469 *f* *p* *fff*

47

48 Andante 4

479 *fff*

489 *f* *fff* *Ritenu* *A tempo* 49 7