

ADAGIO - THEME & VARIATIONS

for Oboe and Wind Ensemble

B♭ Euphonium

Joh Nep HUMMEL

Arr. José SCHYNS

Adagio

The musical score for the B♭ Euphonium part, Adagio section, measures 1-75. The key signature is B-flat major (two flats). The time signature is common time (C). The score begins with a forte (f) dynamic. Measure 1 is a whole note B-flat. Measure 2 is a whole note G-flat. Measure 3 is a whole note F. Measure 4 is a whole note E-flat. Measure 5 is a whole note D. Measure 6 is a whole note C. Measure 7 is a whole note B-flat. Measure 8 is a whole note A. Measure 9 is a whole note G. Measure 10 is a whole note F. Measure 11 is a whole note E-flat. Measure 12 is a whole note D. Measure 13 is a whole note C. Measure 14 is a whole note B-flat. Measure 15 is a whole note A. Measure 16 is a whole note G. Measure 17 is a whole note F. Measure 18 is a whole note E-flat. Measure 19 is a whole note D. Measure 20 is a whole note C. Measure 21 is a whole note B-flat. Measure 22 is a whole note A. Measure 23 is a whole note G. Measure 24 is a whole note F. Measure 25 is a whole note E-flat. Measure 26 is a whole note D. Measure 27 is a whole note C. Measure 28 is a whole note B-flat. Measure 29 is a whole note A. Measure 30 is a whole note G. Measure 31 is a whole note F. Measure 32 is a whole note E-flat. Measure 33 is a whole note D. Measure 34 is a whole note C. Measure 35 is a whole note B-flat. Measure 36 is a whole note A. Measure 37 is a whole note G. Measure 38 is a whole note F. Measure 39 is a whole note E-flat. Measure 40 is a whole note D. Measure 41 is a whole note C. Measure 42 is a whole note B-flat. Measure 43 is a whole note A. Measure 44 is a whole note G. Measure 45 is a whole note F. Measure 46 is a whole note E-flat. Measure 47 is a whole note D. Measure 48 is a whole note C. Measure 49 is a whole note B-flat. Measure 50 is a whole note A. Measure 51 is a whole note G. Measure 52 is a whole note F. Measure 53 is a whole note E-flat. Measure 54 is a whole note D. Measure 55 is a whole note C. Measure 56 is a whole note B-flat. Measure 57 is a whole note A. Measure 58 is a whole note G. Measure 59 is a whole note F. Measure 60 is a whole note E-flat. Measure 61 is a whole note D. Measure 62 is a whole note C. Measure 63 is a whole note B-flat. Measure 64 is a whole note A. Measure 65 is a whole note G. Measure 66 is a whole note F. Measure 67 is a whole note E-flat. Measure 68 is a whole note D. Measure 69 is a whole note C. Measure 70 is a whole note B-flat. Measure 71 is a whole note A. Measure 72 is a whole note G. Measure 73 is a whole note F. Measure 74 is a whole note E-flat. Measure 75 is a whole note D. The score includes various dynamics: f (forte), p (piano), cresc. (crescendo), and decresc. (decrescendo). It also includes articulation marks like accents and slurs. Section markers A, B, C, and D are present. A 'cue 2nd Bassoon' instruction is written above measure 10. The tempo marking 'Allegretto' is present above measure 48. The score ends with a double bar line and repeat sign (//).

f

A

B *cue 2nd Bassoon*

C

D

THEME

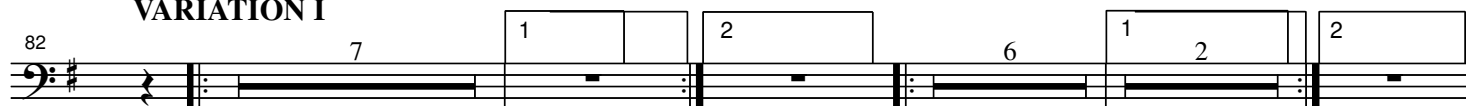
Allegretto

one

one

//

VARIATION I



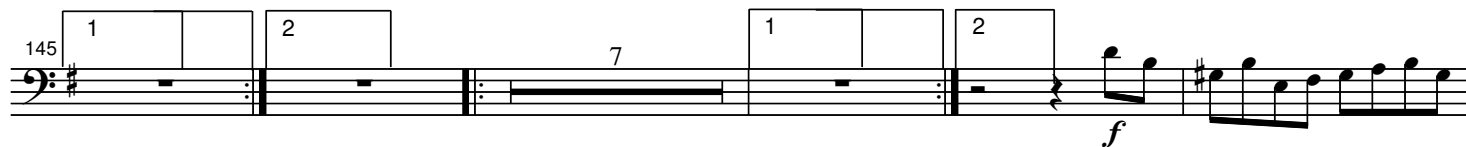
All



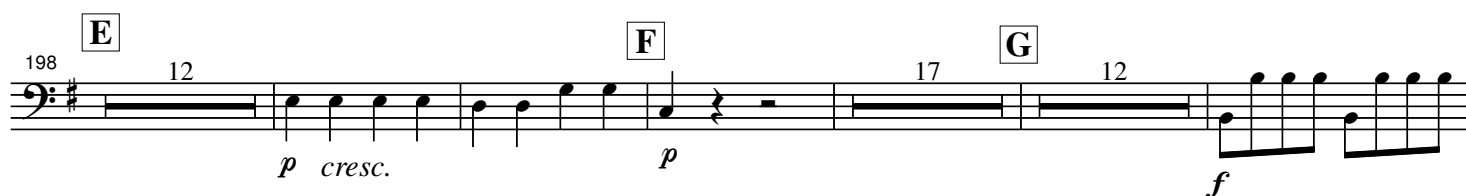
VARIATION II



VARIATION III



VARIATION IV



243 [H] a tempo [I]

rallentando *f*

262

Tempo di Valse, non troppo Presto

275

f

289 [J]

f

303 Alternativo I

315 Alternativo II [K]

362 [L]

f

369

p

378

f *p*

384

f