

Cleydael Castle

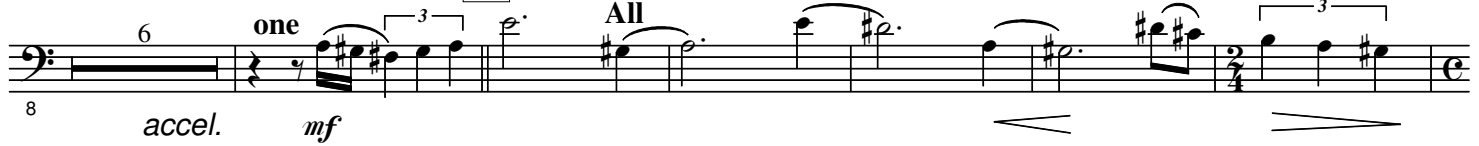
B \flat Bass

Marcel PEETERS

1 Adagio $\text{♩} = 80$ The Beginning



15 Poco Mosso $\text{♩} = 88$



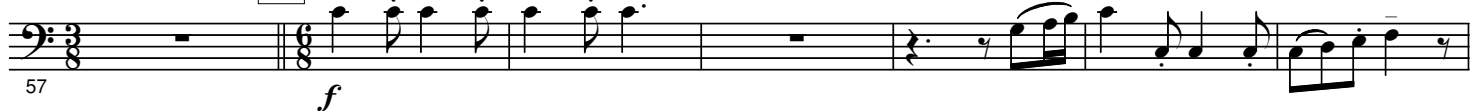
23



43 Moderato $\text{♩} = 52$ The Pearl of the Crown



58

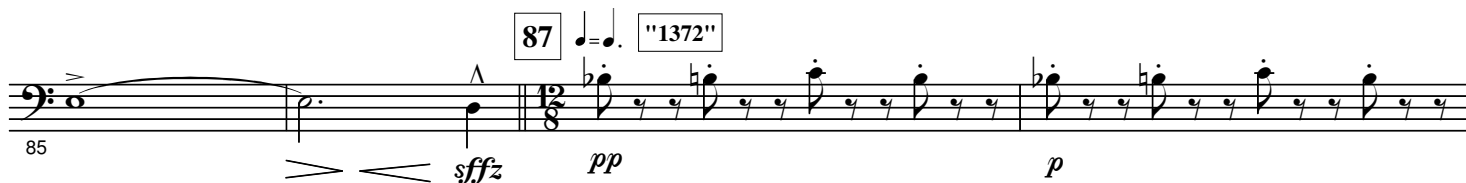
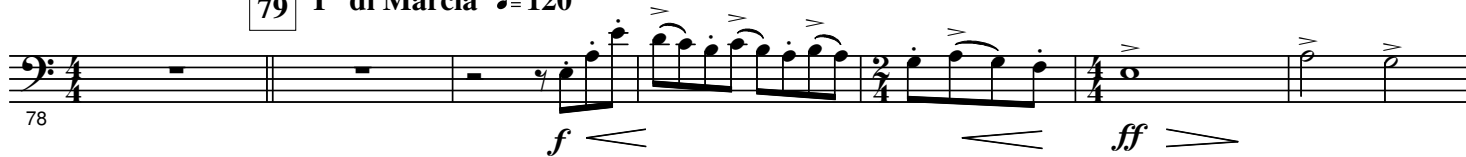


66 a tempo



2.

79 T $^{\circ}$ di Marcia $\text{♩} = 120$



128

131 $\text{♩} = 50$

p

135

139 **Con Ardore** $\text{♩} = 120$ **The Vendetta**

f

141

145 **The Decapitation**

ff

147

ff

152

158 $\text{♩} = 84$

ff *mf*

The Castle Ghost and the 9-Eyed Monster

161

166

mf *mf* *p*

168

1. 2.

176 $\text{♩} = 56$

fp *fp* *fp* *ff* *accel.* *poco a poco*

185

192 $\text{♩} = 88$

p *f* *ff*

The Duke of Alba & Company

4.

196 *p - mf* *ff*

201 *f* *ff* *Cadenza ad lib.* *a tempo* ♩ = 80 *Solo* *mf*

208 *p*

214 *f* *ff*

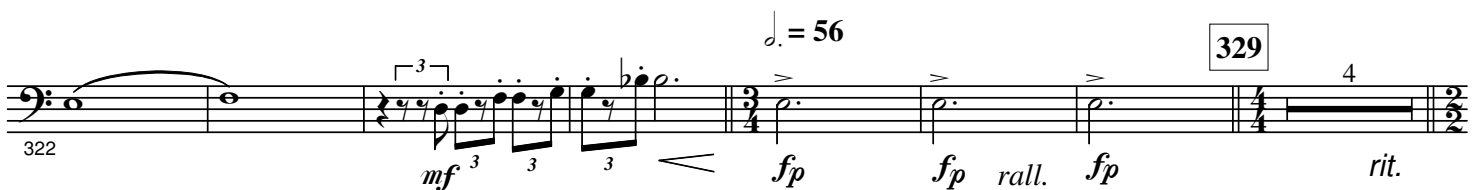
219 *f* *a tempo*

226 *ff* *mf* *Vivo* ♩ = 106 - 110

234 *mf* *p - mf* **Philips II and the Governors**

241

249 *253*



6.

Vivo ♩ = 120 - 132 On the Course

333 *f* *mf* 337

339

345 *p cresc.* *mf* *cresc.*

352 1. 3

360 2. *fp* *fp*

367 371 11 12/8

Deliberato ♩ = 110 The Club Song

383 2 387 *mf* *p - mf*

390

394 *f*

Optional Reprise

To Continue

398

ff

403

403

407

413

rall.

sfz

sfz

ff

416

$\text{♩} = 96$

418

accel. poco

422

a tempo

3

fp

sfz