

Cleydael Castle

B \flat Bass 

Marcel PEETERS

1 Adagio $\text{♩} = 80$ The Beginning



15 Poco Mosso $\text{♩} = 88$



23



43 Moderato $\text{♩} = 52$ The Pearl of the Crown

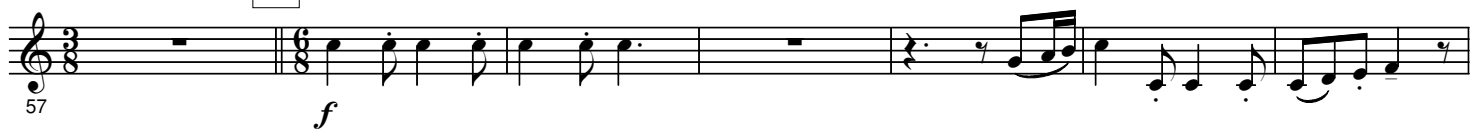


Meno

a tempo



58



66 a tempo

Meno



2.

79 T $^{\circ}$ di Marcia $\text{♩} = 120$



87 $\text{♩} = \text{♩}$ "1372"



93



98



119 a tempo



121



131 $\text{♩} = 50$

128 *p*

139 **Con Ardore** $\text{♩} = 120$ **The Vendetta**

135 *f*

145 **The Decapitation**

141

147 *ff*

158 $\text{♩} = 84$

152 *ff* *mf* *3*

The Castle Ghost and the 9-Eyed Monster

166

161 *mf* *mf* *p*

168 *rit.*

1. 2.

176 $\text{♩} = 56$

176 *fp* *fp* *fp* *ff* *accel.* *poco a poco*


1. *2.*

192 $\text{♩} = 88$

185 *p* *f* *ff*

The Duke of Alba & Company

4.

- B \flat Bass  -

196 *p - mf* *ff*

201 *f* *ff* *Cadenza ad lib.* *a tempo* $\text{♩} = 80$ *Solo* *mf*

208 *p* *p*

All 214 *f* *ff*

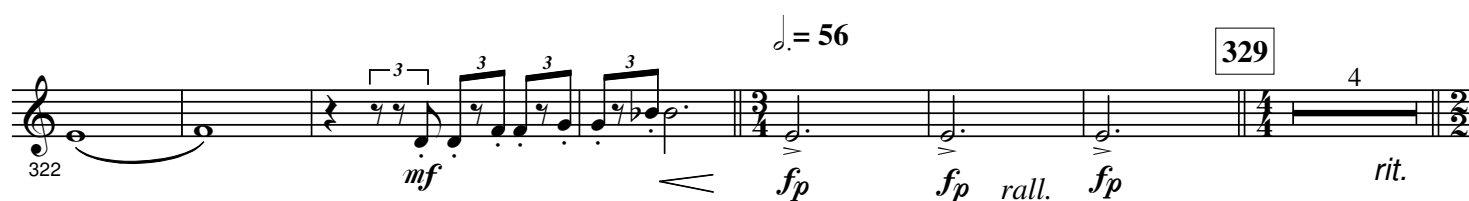
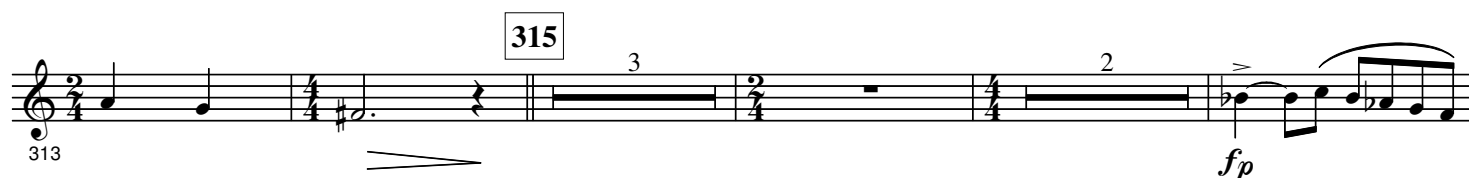
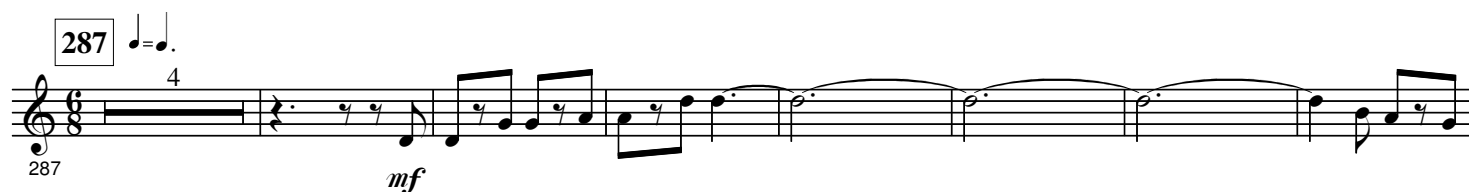
219 *a tempo* *f*

226 *ff* *mf* *Vivo* $\text{♩} = 106 - 110$


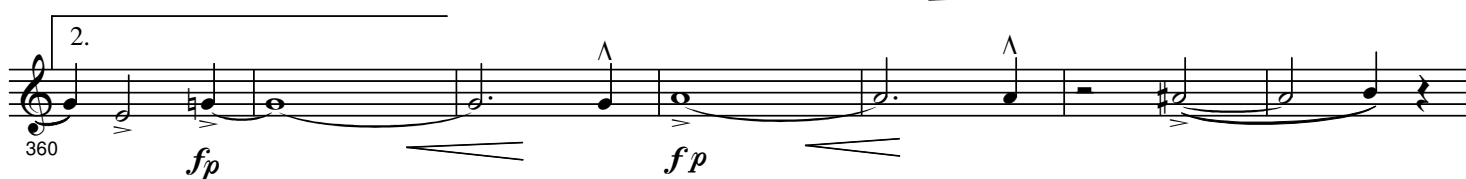
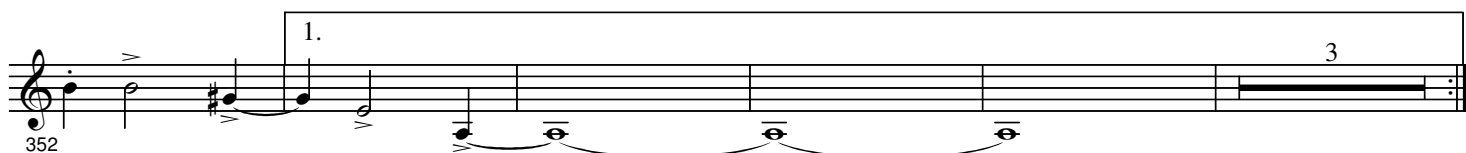
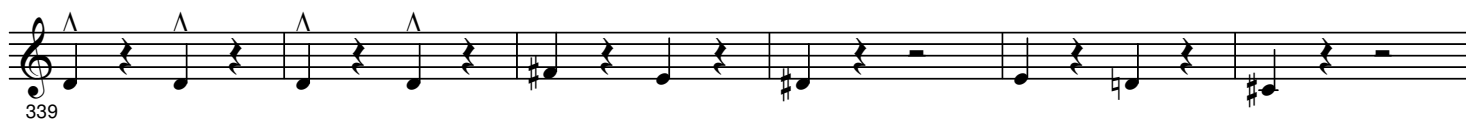
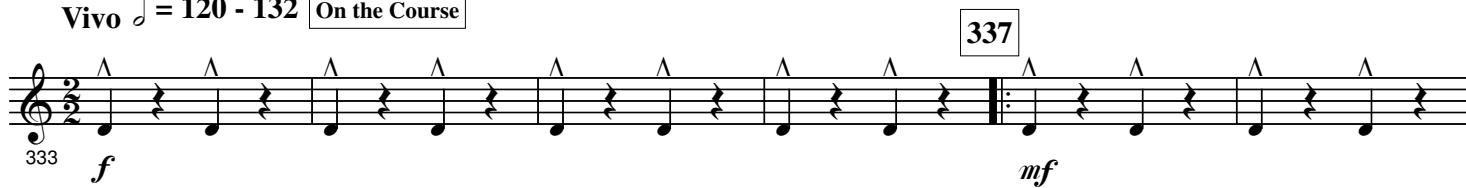
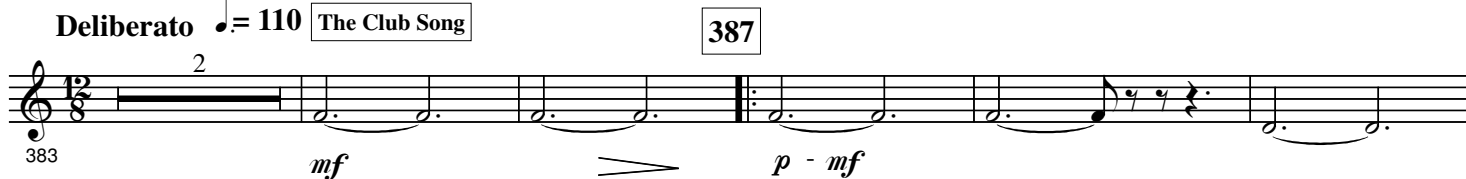
234 **Philips II and the Governors** *mf* *p - mf*

241

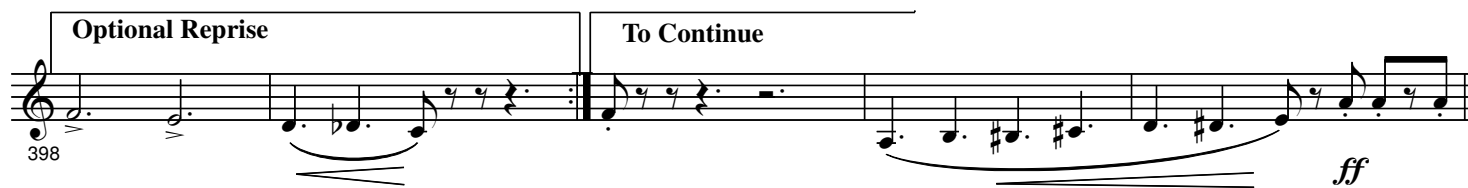
249 *253*



6.

- B \flat Bass  -**Vivo** $\text{♩} = 120 - 132$ On the Course**Deliberato** $\text{♩} = 110$ The Club Song

Optional Reprise **To Continue**



398 *ff*

403



403



407

416 $\text{♩} = 96$



413 *rall.* *sfz* *sfz* *ff*

422 **a tempo**



418 *accel. poco* *f p* *sfz*