

Cleydael Castle

1st B \flat Trombone

Marcel PEETERS

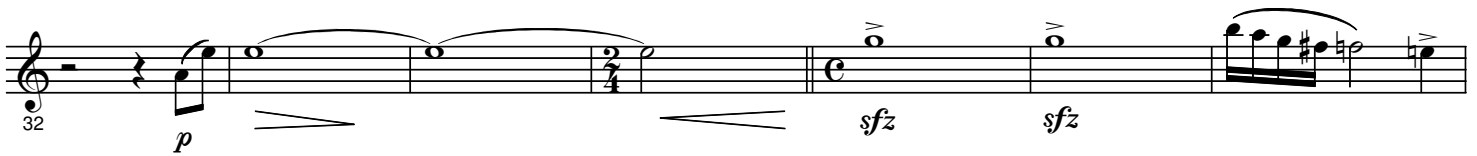
1 Adagio $\text{♩} = 80$ The Beginning



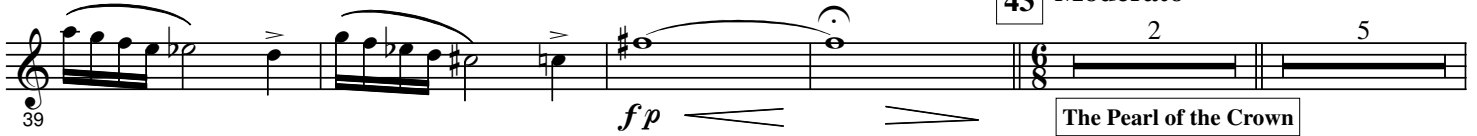
15 Poco Mosso $\text{♩} = 88$



23



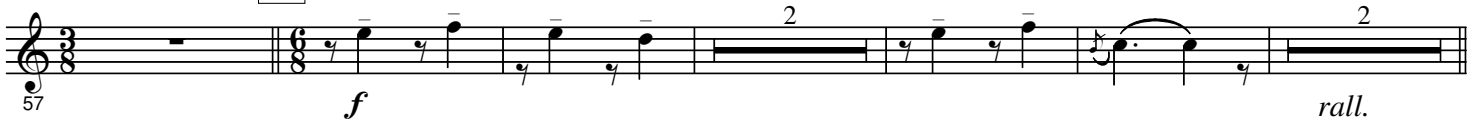
43 Moderato $\text{♩} = 52$



The Pearl of the Crown



58



66 a tempo



Meno

79 T $^{\circ}$ di Marcia $\text{♩} = 120$



87 $\text{♩} = \text{♩}$ "1372"

87 mf f

93 p

98 f $sfz p$

109 mf f ff

115 f $rall. poco$

119 $a tempo$ $\text{♩} = 110$ 121

126 mf

131 $\text{♩} = 50$ 139 **Con Ardore** $\text{♩} = 120$ **The Vendetta**

142 145 **The Decapitation**

147 ff

151 *ff*

158 **Andante** $\text{♩} = 84$ **The Castle Ghost and the 9-Eyed Monster**

muted
mf

166 *p*

rit. *Open*

176 $\text{♩} = 56$

fp *ff* *accel.* *poco a poco*

183

p *f* *fp* *ff*

192 $\text{♩} = 88$ 196

p - mf *ff*

201 *f* *ff* 203 *Cadenza ad lib.* *a tempo* $\text{♩} = 80$

p

212

f *ff*

219 *a tempo*

f

225 *ff* *mf* **Vivo** $\text{♩} = 106 - 110$

mf

4.

234 Philips II and the Governors

234

1. 2. *p*

253 8 *mf* *f*

253

271 *ff*

267

273 3

279

287 4 *mf*

287

297

304 4 *f* *Rall. molto*

304

310 Maestoso *ff* The lord Protector Cromwell

310

313 315

fp

323 $\text{♩} = 56$

mf *fp* *rall.* *fp* *fp*

329 329 **Vivo** $\text{♩} = 120 - 132$ 337

rit. **On the Course** *mf*

344

mf *cresc.*

352

1.

360

2. *fp* *fp*

367 371

9

6.

Deliberato $\text{♩} = 110$

381 *p* *The Club Song* *mf*

387 *p - mf*

396 *f* *Optional Reprise* *To Continue*

401 *ff* **403**

405

409

416 $\text{♩} = 96$ *rall.* *sfz* *sfz* *ff*

422 *a tempo* *3* *fp* *sfz*

420 *accel. poco*