

Cleydael Castle

B \flat Bass Trombone

Marcel PEETERS

1 Adagio $\text{♩} = 80$ The Beginning



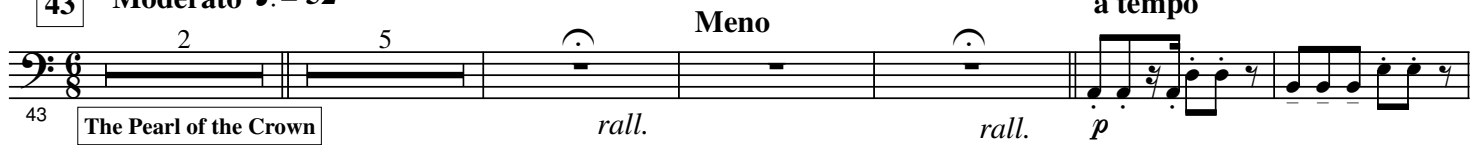
15 Poco Mosso $\text{♩} = 88$



23



43 Moderato $\text{♩} = 52$



58



66 a tempo

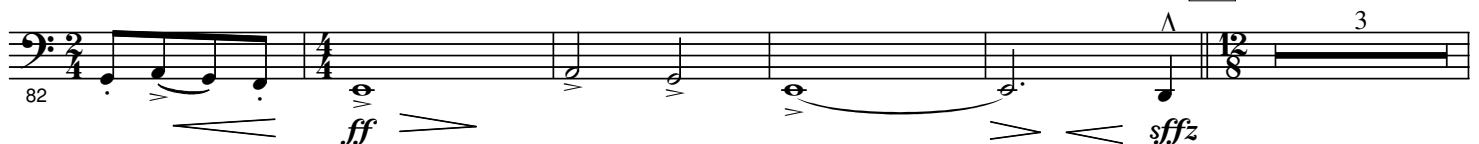


Meno

79 T° di Marcia $\text{♩} = 120$



87 "1372"



- B♭ Bass Trombone -

2.

90 *mf* *f* 93 *p*

94

98 4 *sfz p*

106 *mf*

112 *f* *ff* *f rall.*

119 a tempo ♩ = 110 2 5 *mf*

128 131 ♩ = 50 8

139 Con Ardore ♩ = 120 The Vendetta 3 *f*

145 The Decapitation 3 3 3 3

149 *ff* *ff*

153 *mf*

158 Andante ♩ = 84 The Castle Ghost and the 9-Eyed Monster

158 *mf* *muted*

166 *p* *rit.* *Open*

176 ♩ = 56 *f_p* *ff* *accel. poco a poco*

183 *p* *f* *f_p* *ff*

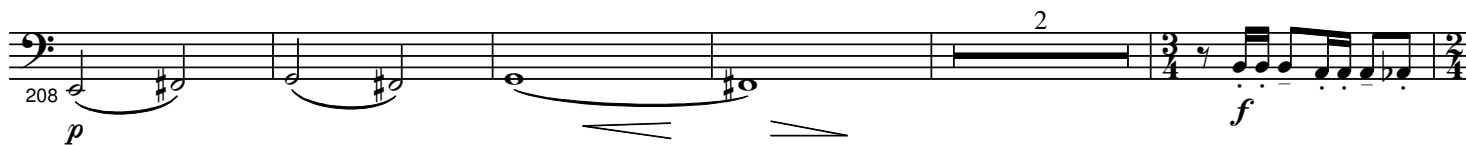
192 ♩ = 88 The Duke of Alba & Company

192 *p - mf* *ff*

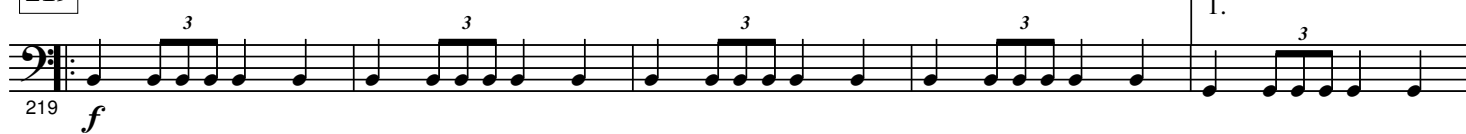
203 *f* *ff* *Cadenza ad lib.* *a tempo* ♩ = 80

- B♭ Bass Trombone -

4.

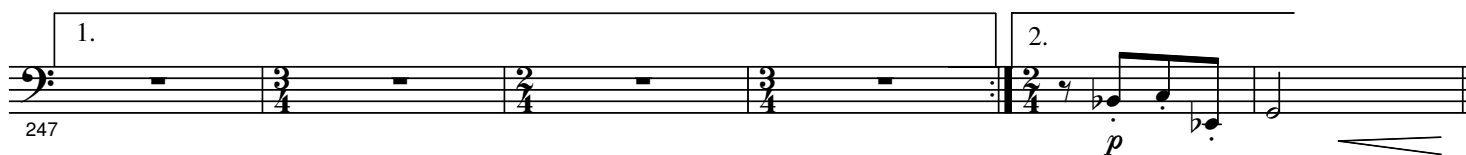


219 a tempo



Vivo

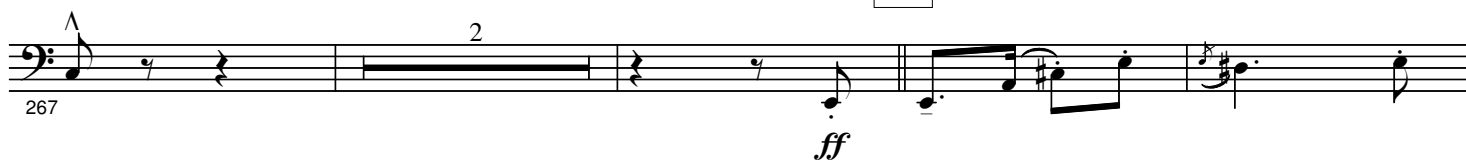
234 Philips II and the Governors

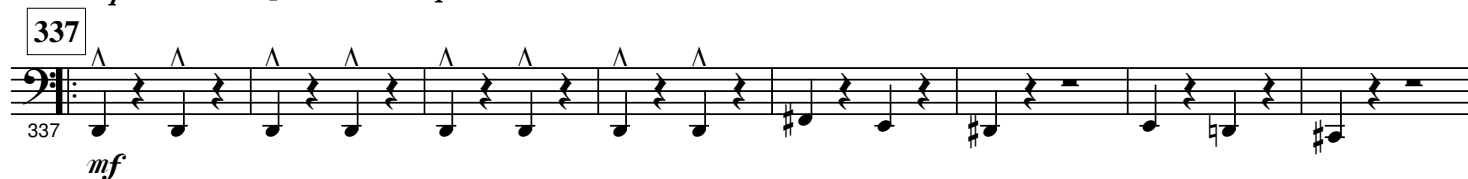
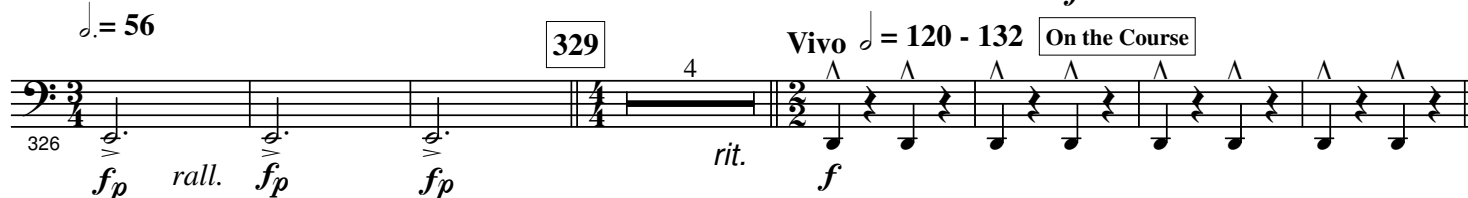
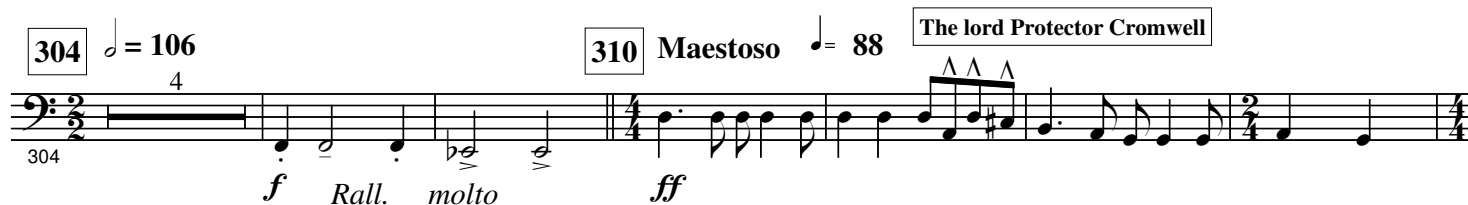
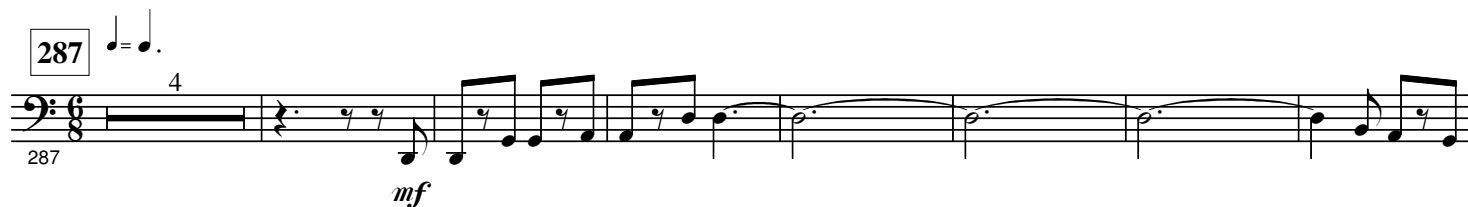


253



271





6.

Deliberato ♩. = 110 The Club Song

380 *p* *mf* *f*

387 *p - mf*

391

395 *f* Optional Reprise

To Continue 403 *ff*

404

409 *rall.* *sfz*

416 ♩. = 96 *sfz* *ff* *accel. poco*

422 *a tempo* *fp* *sfz*