

Cleydael Castle

E♭ Bass

Marcel PEETERS

1 Adagio ♩ = 80 **The Beginning**

mf

15 Poco Mosso ♩ = 88

accel. mf

23

mf f

29

p

35

sfz sfz

43 Moderato ♩ = 52 **The Pearl of the Crown**

f p rall.

Meno a tempo

51

rall. p

58

f

66 a tempo

rall. accel. poco a poco

Meno

2.

79 T° di Marcia ♩ = 120

78 *f* *ff*

85 *sfz* *pp* *p*

87 ♩ = ♩ "1372"

89 *mp* *mf* *f*

93 *p*

98 *f*

97

102 *sfz p*

108 *mf* *f*

114 *ff* *f* *rall. poco*

119 a tempo

121 *p* *mf*

121

128

131 $\text{♩} = 50$

8

139 **Con Ardore** $\text{♩} = 120$ **The Vendetta**

139 *f*

3 3 3

143

145 **The Decapitation**

3 3 3

148

ff 3 3 3 3 *ff* 3 3 3 3

152

158 $\text{♩} = 84$ **The Castle Ghost and the 9-Eyed Monster**

4 *mf*

161

166

2 *mf* *p*

169

176 $\text{♩} = 56$

2 1. 2 2. 2 *rit.* *f_p* *f_p*

178 *f_p* *ff* *accel.* *poco a poco*

185

192 $\text{♩} = 88$

3 4 *p* *f* *ff*

The Duke of Alba & Company

4.

196 *p - mf* *ff*

201 *f* *ff* *Cadenza ad lib.* *a tempo* ♩ = 80

208 *p* *f*

215 *ff*

219 *a tempo* *f* 3 3 3 3 3

224 *ff* 3 *mf*

Vivo ♩ = 106 - 110

230

234 Philips II and the Governors

236 *mf* 9 1.

249 *mf* *p*

264

ff

279

287

4

mf

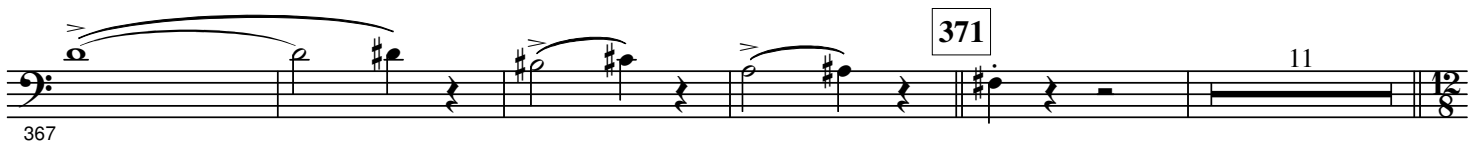
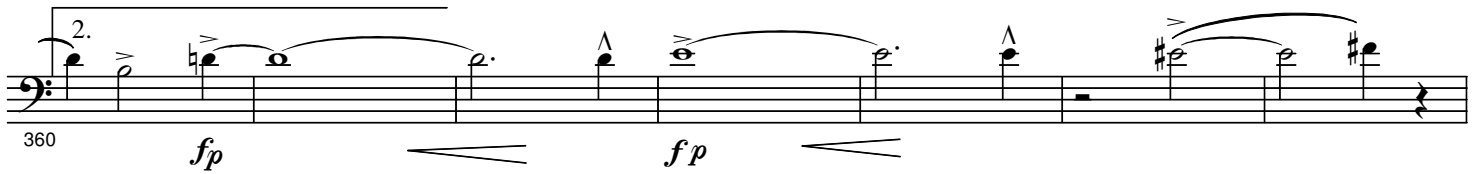
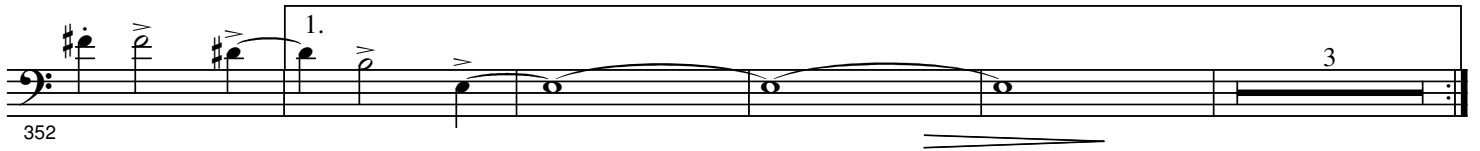
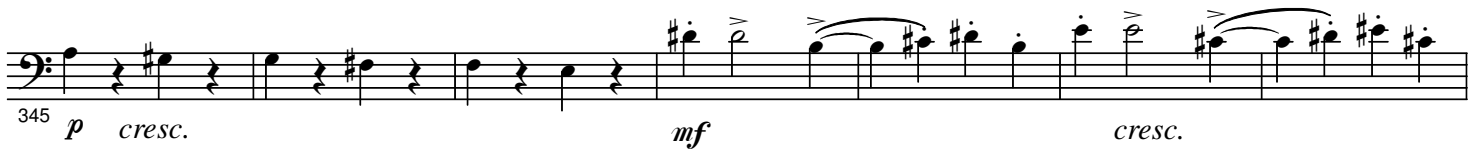
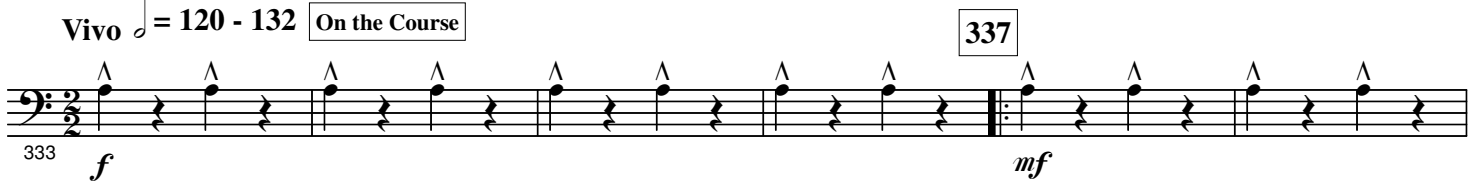
298 

[illegible]

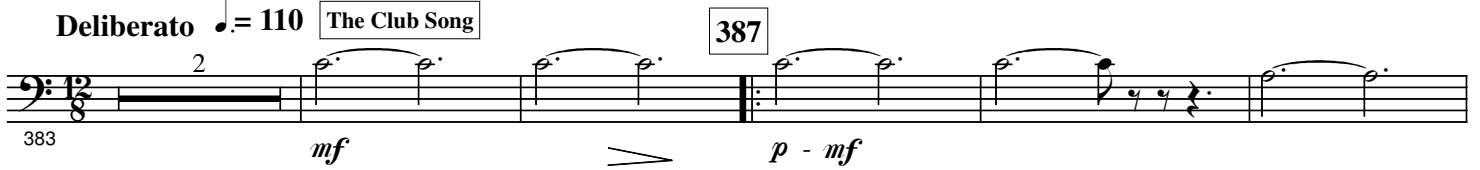
Measures 324-329. Measure 324: Bass clef, 3/4 time, *mf*, triplet of eighth notes. Measure 325: Bass clef, 3/4 time, *fp*, dotted half note. Measure 326: Bass clef, 3/4 time, *fp*, dotted half note, *rall.*. Measure 327: Bass clef, 3/4 time, *fp*, dotted half note. Measure 328: Bass clef, 4/4 time, 4-measure rest. Measure 329: Bass clef, 2/2 time, 2-measure rest.

6.

Vivo ♩ = 120 - 132 On the Course



Deliberato ♩ = 110 The Club Song



Optional Reprise

To Continue

398

ff

403

407

413

rall.

sfz

sfz

ff

416

$\text{♩} = 96$

418

accel. poco

422

a tempo

f p

sfz

3