

SLAVONIC DANCE Op. 46

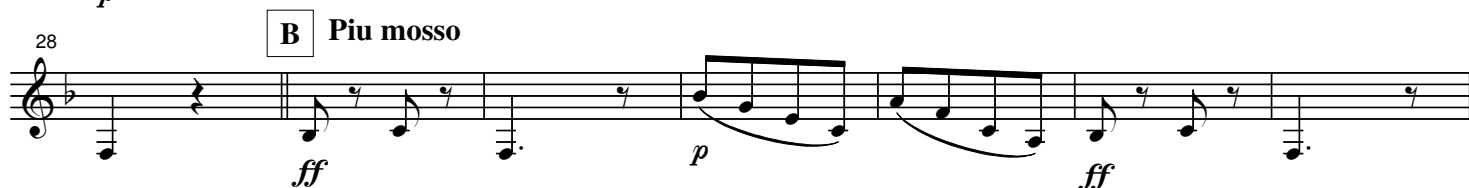
E♭ Bass

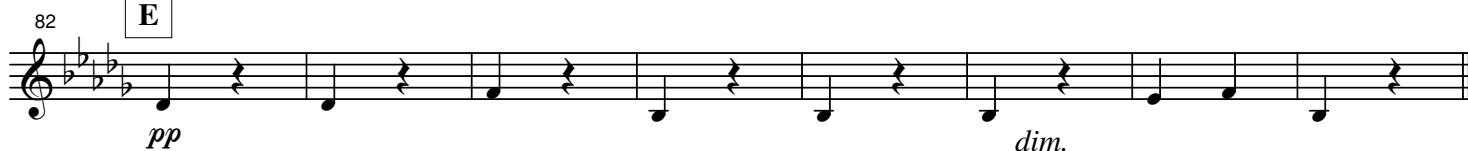
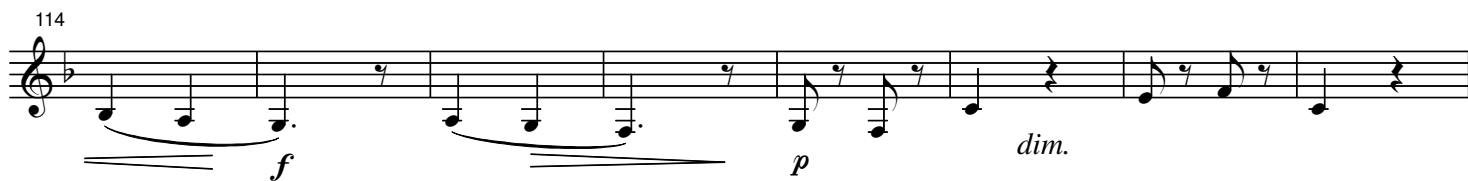
N° 3

Antonin DVORAK
Arr. José SCHYNS

Poco allegro

one cue String Bass



D a tempo**E****F** Piu mosso**G** Poco meno mosso**H** Tempo I°

146 I a tempo

f rit. — *p*

This musical staff contains measures 146 through 153. It begins with a treble clef and a key signature of one flat. The notation consists of eighth and sixteenth notes with rests. A dynamic marking of *f* (forte) is placed below the staff, followed by a *rit.* (ritardando) marking and a hairpin wedge that tapers to a *p* (piano) marking at the end of the staff.

154 J Piu mosso

ff

This musical staff contains measures 154 through 161. It continues the melodic line with eighth and sixteenth notes. A dynamic marking of *ff* (fortissimo) is placed below the staff at the beginning of measure 160.

162 Piu animato

p *ff* *p*

This musical staff contains measures 162 through 169. It features more complex rhythmic patterns, including beamed eighth and sixteenth notes. Dynamic markings of *p* (piano), *ff* (fortissimo), and *p* (piano) are placed below the staff at measures 162, 165, and 168 respectively.

170

ff *p* *p* *sempre cresc.*

This musical staff contains measures 170 through 177. It continues the melodic development. Dynamic markings of *ff* (fortissimo), *p* (piano), and *p* (piano) are placed below the staff at measures 170, 173, and 176 respectively. The instruction *sempre cresc.* (sempre crescendo) is written below the staff at the end.

178 K

ff *p* *cresc.*

This musical staff contains measures 178 through 185. It features a mix of eighth and sixteenth notes. Dynamic markings of *ff* (fortissimo), *p* (piano), and *cresc.* (crescendo) are placed below the staff at measures 178, 182, and 185 respectively.

186

ff *p*

This musical staff contains measures 186 through 193. It continues the melodic line. Dynamic markings of *ff* (fortissimo) and *p* (piano) are placed below the staff at measures 189 and 193 respectively.

194

cresc. *ff*

This musical staff contains measures 194 through 201. It concludes the piece with a final melodic phrase. Dynamic markings of *cresc.* (crescendo) and *ff* (fortissimo) are placed below the staff at measures 194 and 197 respectively. The staff ends with a double bar line.