

# Lieutenant Kijé

## Symphonic Suite Op. 60

Sergei PROKOFIEV  
Arr. José SCHYNS

1st E $\flat$  Horn

### I - The Birth of Kijé

**Andante assai** **1** **Doppio movimento** **2**

5 12

*rit.* *ppp*

20

**3** **4**

4 8 4

**5** **Poco piu animato**  $\text{♩} = 128 - 132$   
*con brio*

*p* *cresc.*

38

43 *ff*

**6** **7**

48 *ff*

**8**

53 *mf*

**9**

58 *ff*

63 *pp* *rit.*

**10** **Andante** **11** *Solo* **12**

7 3 *p dolce* 3

68

**13** **Allegro come prima** **14** **Andante assai**

8 5

83 *p*

© 1936 by Hawkes & Son (London) Ltd.

This arrangement made by permission of Boosey & Hawkes Music Publishers Ltd.

Authorized Edition HAFABRA Music - Louis MARTINUS

84, Village / Dorp - B-3790 - FOURONS/VOEREN (Belgium)

Tel. ++32(04)381.23.28 - Fax. ++32(04)381.23.52

www.hafabramusic.com

All rights reserved  
for all countries

2.

- 1st E♭ Horn -

**II - Romance**

15 Andante 10 16 *f* *espressivo*

17 8 18 4 19 Allegretto 6 20 6

21 Piu mosso *mp* Calando 2

22 Tempo 6 23 Poco piu mosso *mf* *f*

24 Andante 6 25 *mp* *f rit.* *mp* *p* Meno mosso 2

15 40 47 58

**III - Kijé's Wedding**

26 Allegro furioso ♩ = 84 *f* *pesante*

27 Piu animato ♩ = 104 *p*

28 *p*

8 15 22

29 *p*

30 3 7 10 *p*

31 32

33 *pp*

34 **Meno mosso, come prima**  
*f* pesante

35 **Poco piu mosso**  $\text{♩} = 116$   
*p*

36 6 2 37 *f*

38 **Meno mosso, come prima**  
*f* pesante

*ff rit.*

4.

- 1st E $\flat$  Horn -

## IV - Troika

39 Moderato  $\text{♩} = 104$ 

40

Meno mosso

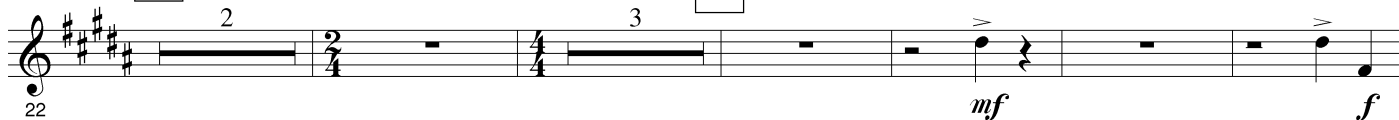
41

Allegro con brio



42

43



44



45



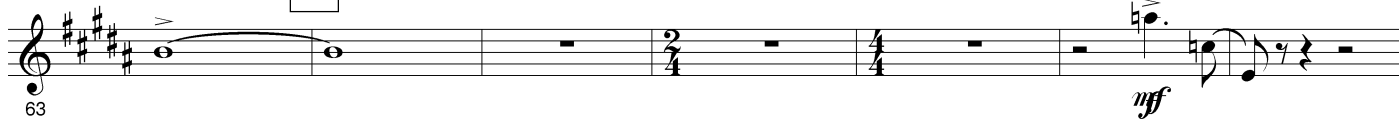
46



47



48



49

50



76 *mp* *mf*

81 *f*

86 *f rit.*

51

52 al Moderato, come prima

92 *ff*

### V - Kijé's Funeral

53 Andante assai

54 Allegro moderato ♩ = 96

55

56

10 *f* *p*

57 Meno mosso  
Solo ♩ = 72

30 *mp espr.*

58 *f*

59 Poco meno mosso

42

6.

**60** Ancora un poco piu lento **61**

54 8 *p*

**62**

66 *p*

**63** **64**

71 3 8

**65** **66** **67** **68**

76 6 7 4 *p*

90

**69**

109 *pp*

**70** **71**

115 5 5

**72** **73** Andante assai

119 6 4 *rit. assai* *rit.*

129