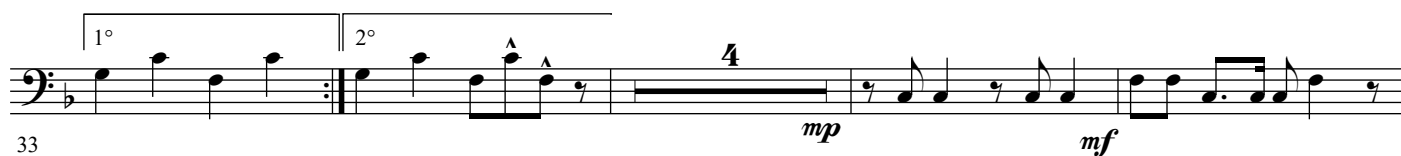
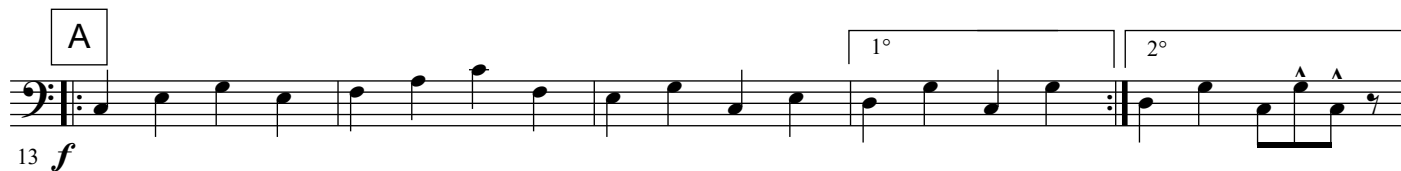


E♭ Bass

Dixie's Land

Dan Emmett
arr. Pär Frederiksson

March Tempo




58

63 E **Square Dance** all

f

68 *mf* *f* *mf* *f*

73

78 

83 *pp* *f*

89

94

102 *ff*

The musical score for the bass line of 'The Rose Tree' begins at measure 102 with a forte (*ff*) dynamic. The melody is written in the bass clef and consists of eighth and sixteenth notes, with a final measure featuring a triplet of eighth notes. The key signature has one flat (B-flat), and the time signature is 4/4.