

B $\flat$  Bass

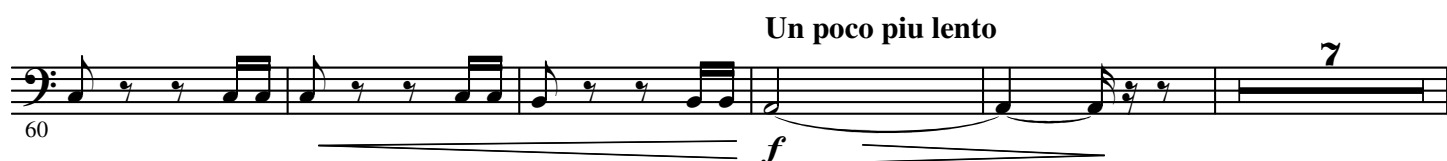
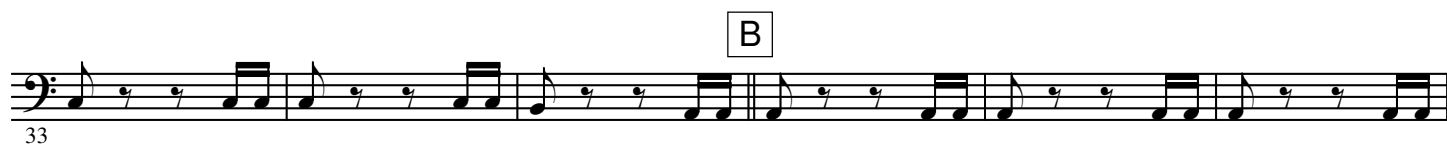
# LA PRINCESSE JAUNE

*Overture from the Opera*

Camille SAINT-SAËNS Op. 30

Arranged by José SCHYNS

Andantino



2.

- B $\flat$  Bass -

**D** Allegro giocoso

72 *pp*

92 *p* *cresc.*

97 *f*

**E**

113 *f*

**F**

121 *p*

**G**

127 *p* *f*

133 *p*

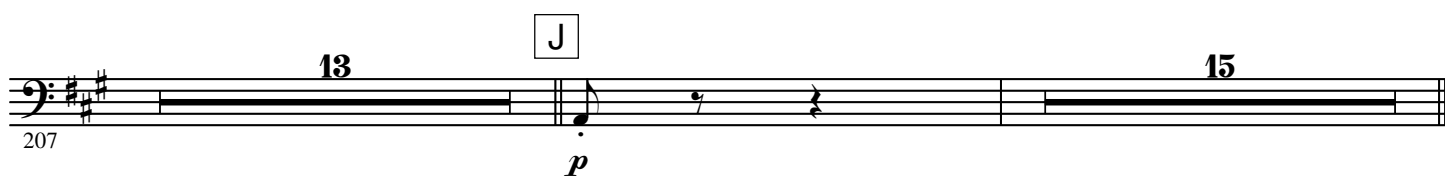
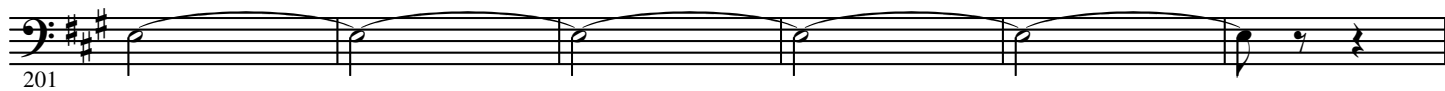
**H**

168 *p*

174 *pp*

**I**

181 *mf*



4.

- B $\flat$  Bass -

272