

B♭ Bass



Overture from the Opera

Arranged by José SCHYNS

3

P

\dot{p}

9

A

15

21

27

B

33

39

46

C

53

Un poco piu lento

2

60

 f

2.

- B \flat Bass -**D** Allegro giocoso

72 *pp*

92 *p* *cresc.*

97 *f*

113 *f*

121 *p*

127 *p* *f*

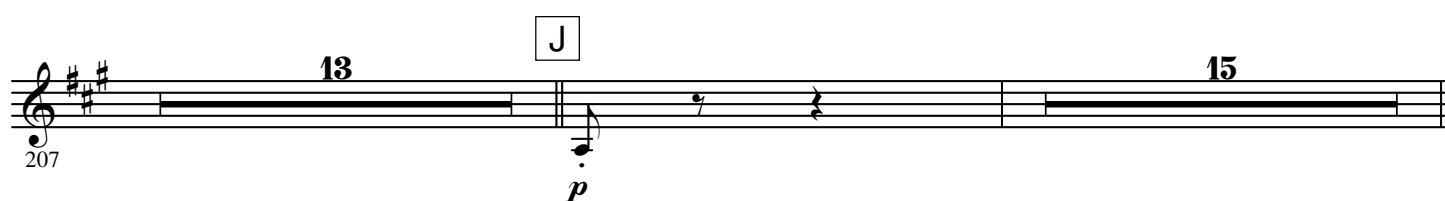
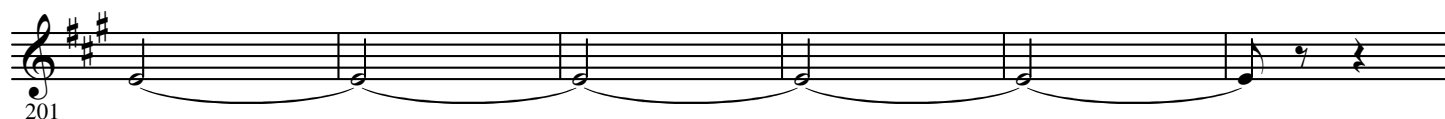
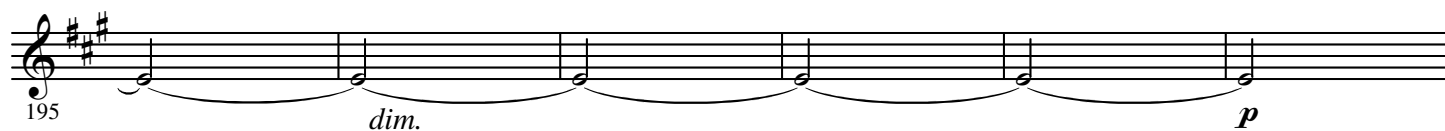
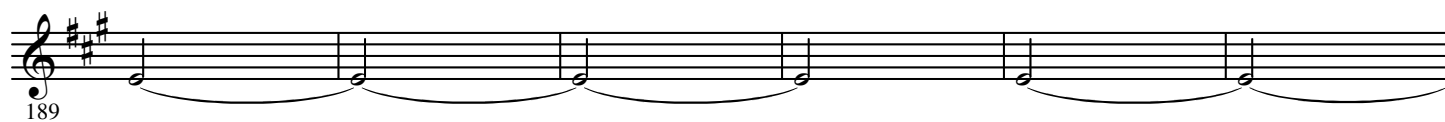
133 *p*

168 *p*

174 *pp*

181 *mf*

Measures 72-181 are written on a single staff in treble clef with a key signature of three sharps (F#, C#, G#). The tempo is marked 'Allegro giocoso'. The score includes various musical notations such as slurs, ties, and dynamic markings. The dynamics range from *pp* (pianissimo) to *f* (forte). The score is divided into sections labeled D, E, F, G, H, and I. Section D starts at measure 72 and ends at measure 112. Section E starts at measure 92 and ends at measure 112. Section F starts at measure 113 and ends at measure 132. Section G starts at measure 127 and ends at measure 156. Section H starts at measure 133 and ends at measure 172. Section I starts at measure 181 and ends at measure 184. The score includes a variety of musical notations, including slurs, ties, and dynamic markings. The dynamics range from *pp* (pianissimo) to *f* (forte). The score is divided into sections labeled D, E, F, G, H, and I. Section D starts at measure 72 and ends at measure 112. Section E starts at measure 92 and ends at measure 112. Section F starts at measure 113 and ends at measure 132. Section G starts at measure 127 and ends at measure 156. Section H starts at measure 133 and ends at measure 172. Section I starts at measure 181 and ends at measure 184.



4.

- B \flat Bass -

