

E♭ Bass



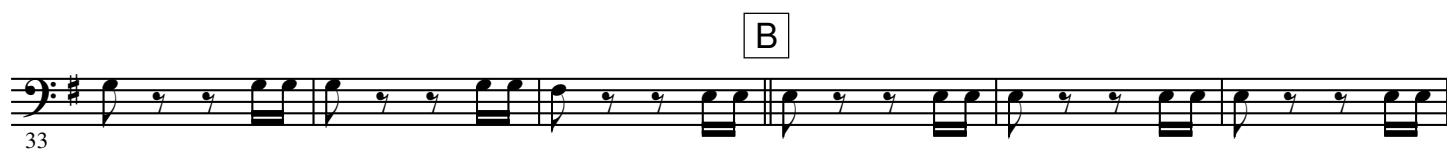
LA PRINCESSE JAUNE

Overture from the Opera

Camille SAINT-SAËNS Op. 30

Arranged by José SCHYNS

Andantino



2.

- E♭ Bass -

D Allegro giocoso

72 *pp*

92 *p* *cresc.*

97 *f*

113 *f*

121 *p*

127 *p* *f*

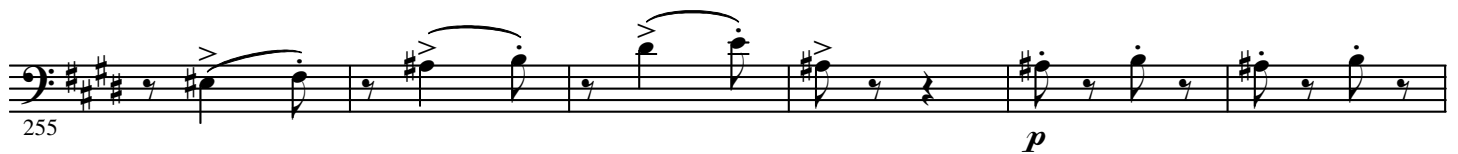
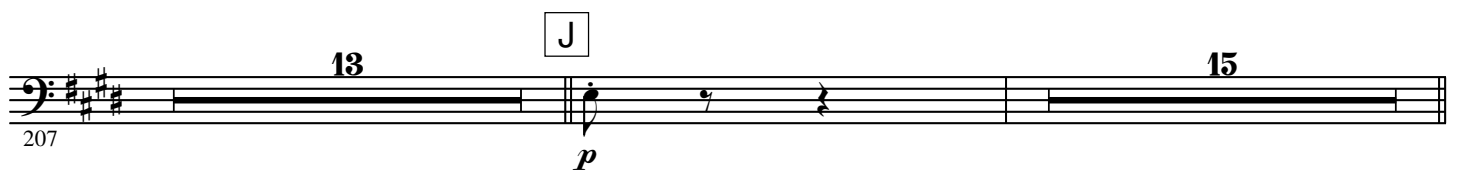
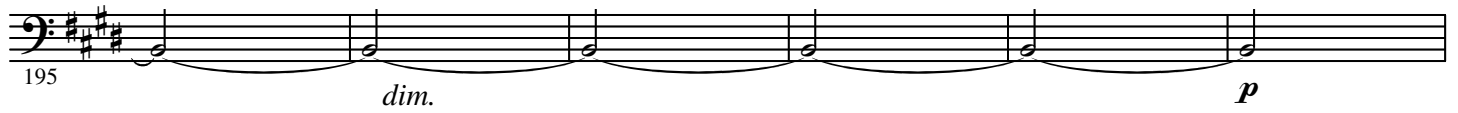
133 *p*

168 *p*

174 *pp*

181 *mf*

Measures 72-181 of the musical score for E♭ Bass. The score is in 3/4 time and features a key signature of three sharps (F#, C#, G#). The tempo is marked 'Allegro giocoso'. The score is divided into sections labeled D, E, F, G, H, and I. Section D (measures 72-112) includes a piano (*pp*) dynamic and a crescendo (*cresc.*). Section E (measures 113-120) is marked *f*. Section F (measures 121-126) is marked *p*. Section G (measures 127-132) is marked *p* and *f*. Section H (measures 133-146) is marked *p*. Section I (measures 147-181) is marked *pp* and *mf*. The score includes various musical notations such as slurs, accents, and dynamic markings.



4.

- E \flat Bass -

