

2nd E \flat Horn

LA PRINCESSE JAUNE

Overture from the Opera

Camille SAINT-SAËNS Op. 30

Arranged by José SCHYNS

Andantino

1

p

A

13

20

27

B

34

41

C

48

55

Un poco piu lento

62

f

pp

D

Allegro giocoso

74

p

82

E

90

f

2.

- 2nd E \flat Horn -

E

106 *p* *f*

F

116 *p* *f*

122 *p*

G

128 *f* *p*

H

154 *p* *f* *p*

160 *p* *f* *p*

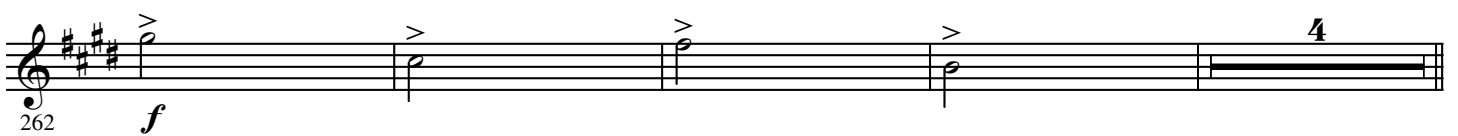
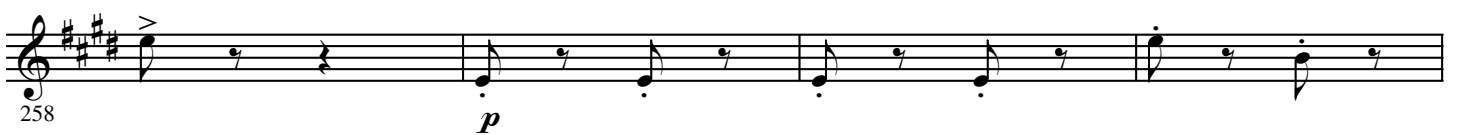
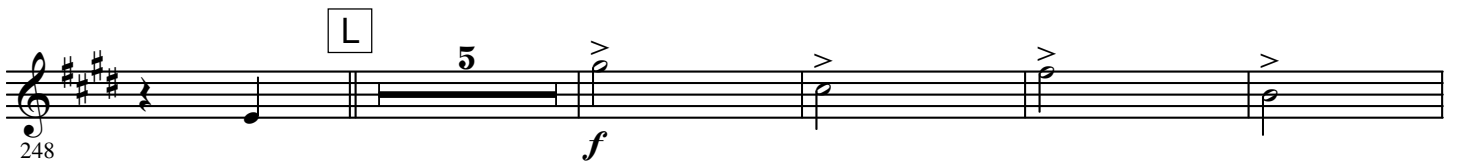
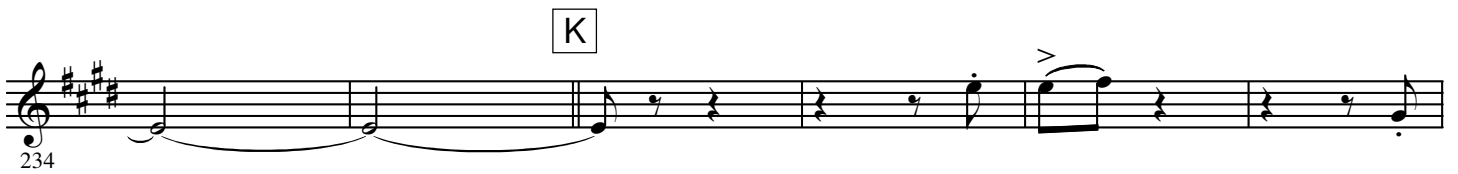
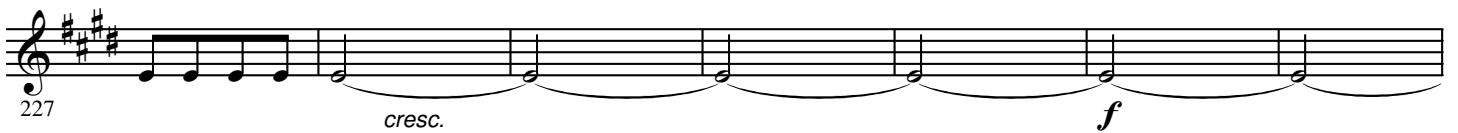
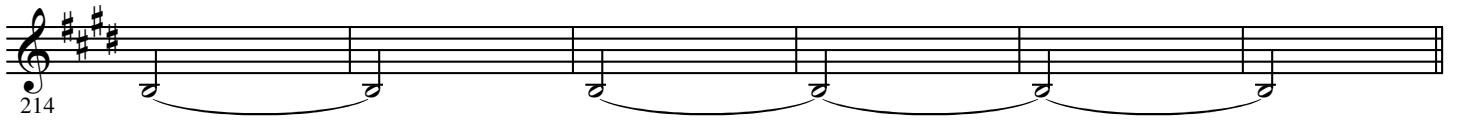
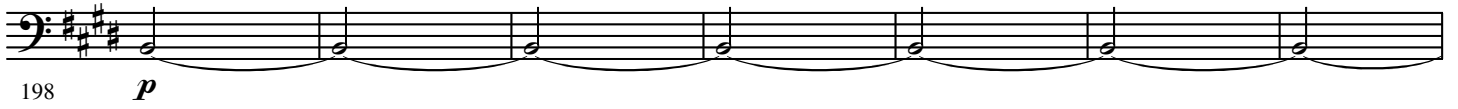
167

173

179 *pp*

I

185 **13**



M

277

The musical notation shows a single staff with a treble clef and a key signature of three sharps (F#, C#, G#). The melody consists of the following notes: D4 (quarter), E4 (quarter), F#4 (half), G#4 (half), A4 (quarter), B4 (quarter), C5 (half), B4 (half), A4 (quarter), G#4 (quarter), F#4 (half), E4 (half), D4 (half), C4 (half), B3 (half), A3 (half), G3 (half), F#3 (half), E3 (half), D3 (half), C3 (half), B2 (half), A2 (half), G2 (half), F#2 (half), E2 (half), D2 (half), C2 (half), B1 (half), A1 (half), G1 (half), F#1 (half), E1 (half), D1 (half), C1 (half), B0 (half), A0 (half), G0 (half), F#0 (half), E0 (half), D0 (half), C0 (half), B-1 (half), A-1 (half), G-1 (half), F#-1 (half), E-1 (half), D-1 (half), C-1 (half), B-2 (half), A-2 (half), G-2 (half), F#-2 (half), E-2 (half), D-2 (half), C-2 (half), B-3 (half), A-3 (half), G-3 (half), F#-3 (half), E-3 (half), D-3 (half), C-3 (half), B-4 (half), A-4 (half), G-4 (half), F#-4 (half), E-4 (half), D-4 (half), C-4 (half), B-5 (half), A-5 (half), G-5 (half), F#-5 (half), E-5 (half), D-5 (half), C-5 (half), B-6 (half), A-6 (half), G-6 (half), F#-6 (half), E-6 (half), D-6 (half), C-6 (half), B-7 (half), A-7 (half), G-7 (half), F#-7 (half), E-7 (half), D-7 (half), C-7 (half), B-8 (half), A-8 (half), G-8 (half), F#-8 (half), E-8 (half), D-8 (half), C-8 (half), B-9 (half), A-9 (half), G-9 (half), F#-9 (half), E-9 (half), D-9 (half), C-9 (half), B-10 (half), A-10 (half), G-10 (half), F#-10 (half), E-10 (half), D-10 (half), C-10 (half), B-11 (half), A-11 (half), G-11 (half), F#-11 (half), E-11 (half), D-11 (half), C-11 (half), B-12 (half), A-12 (half), G-12 (half), F#-12 (half), E-12 (half), D-12 (half), C-12 (half), B-13 (half), A-13 (half), G-13 (half), F#-13 (half), E-13 (half), D-13 (half), C-13 (half), B-14 (half), A-14 (half), G-14 (half), F#-14 (half), E-14 (half), D-14 (half), C-14 (half), B-15 (half), A-15 (half), G-15 (half), F#-15 (half), E-15 (half), D-15 (half), C-15 (half), B-16 (half), A-16 (half), G-16 (half), F#-16 (half), E-16 (half), D-16 (half), C-16 (half), B-17 (half), A-17 (half), G-17 (half), F#-17 (half), E-17 (half), D-17 (half), C-17 (half), B-18 (half), A-18 (half), G-18 (half), F#-18 (half), E-18 (half), D-18 (half), C-18 (half), B-19 (half), A-19 (half), G-19 (half), F#-19 (half), E-19 (half), D-19 (half), C-19 (half), B-20 (half), A-20 (half), G-20 (half), F#-20 (half), E-20 (half), D-20 (half), C-20 (half), B-21 (half), A-21 (half), G-21 (half), F#-21 (half), E-21 (half), D-21 (half), C-21 (half), B-22 (half), A-22 (half), G-22 (half), F#-22 (half), E-22 (half), D-22 (half), C-22 (half), B-23 (half), A-23 (half), G-23 (half), F#-23 (half), E-23 (half), D-23 (half), C-23 (half), B-24 (half), A-24 (half), G-24 (half), F#-24 (half), E-24 (half), D-24 (half), C-24 (half), B-25 (half), A-25 (half), G-25 (half), F#-25 (half), E-25 (half), D-25 (half), C-25 (half), B-26 (half), A-26 (half), G-26 (half), F#-26 (half), E-26 (half), D-26 (half), C-26 (half), B-27 (half), A-27 (half), G-27 (half), F#-27 (half), E-27 (half), D-27 (half), C-27 (half), B-28 (half), A-28 (half), G-28 (half), F#-28 (half), E-28 (half), D-28 (half), C-28 (half), B-29 (half), A-29 (half), G-29 (half), F#-29 (half), E-29 (half), D-29 (half), C-29 (half), B-30 (half), A-30 (half), G-30 (half), F#-30 (half), E-30 (half), D-30 (half), C-30 (half), B-31 (half), A-31 (half), G-31 (half), F#-31 (half), E-31 (half), D-31 (half), C-31 (half), B-32 (half), A-32 (half), G-32 (half), F#-32 (half), E-32 (half), D-32 (half), C-32 (half), B-33 (half), A-33 (half), G-33 (half), F#-33 (half), E-33 (half), D-33 (half), C-33 (half), B-34 (half), A-34 (half), G-34 (half), F#-34 (half), E-34 (half), D-34 (half), C-34 (half), B-35 (half), A-35 (half), G-35 (half), F#-35 (half), E-35 (half), D-35 (half), C-35 (half), B-36 (half), A-36 (half), G-36 (half), F#-36 (half), E-36 (half), D-36 (half), C-36 (half), B-37 (half), A-37 (half), G-37 (half), F#-37 (half), E-37 (half), D-37 (half), C-37 (half), B-38 (half), A-38 (half), G-38 (half), F#-38 (half), E-38 (half), D-38 (half), C-38 (half), B-39 (half), A-39 (half), G-39 (half), F#-39 (half), E-39 (half), D-39 (half), C-39 (half), B-40 (half), A-40 (half), G-40 (half), F#-40 (half), E-40 (half), D-40 (half), C-40 (half), B-41 (half), A-41 (half), G-41 (half), F#-41 (half), E-41 (half), D-41 (half), C-41 (half), B-42 (half), A-42 (half), G-42 (half), F#-42 (half), E-42 (half), D-42 (half), C-42 (half), B-43 (half), A-43 (half), G-43 (half), F#-43 (half), E-43 (half), D-43 (half), C-43 (half), B-44 (half), A-44 (half), G-44 (half), F#-44 (half), E-44 (half), D-44 (half), C-44 (half), B-45 (half), A-45 (half), G-45 (half), F#-45 (half), E-45 (half), D-45 (half), C-45 (half), B-46 (half), A-46 (half), G-46 (half), F#-46 (half), E-46 (half), D-46 (half), C-46 (half), B-47 (half), A-47 (half), G-47 (half), F#-47 (half), E-47 (half), D-47 (half), C-47 (half), B-48 (half), A-48 (half), G-48 (half), F#-48 (half), E-48 (half), D-48 (half), C-48 (half), B-49 (half), A-49 (half), G-49 (half), F#-49 (half), E-49 (half), D-49 (half), C-49 (half), B-50 (half), A-50 (half), G-50 (half), F#-50 (half), E-50 (half), D-50 (half), C-50 (half), B-51 (half), A-51 (half), G-51 (half), F#-51 (half), E-51 (half), D-51 (half), C-51 (half), B-52 (half), A-52 (half), G-52 (half), F#-52 (half), E-52 (half), D-52 (half), C-52 (half), B-53 (half), A-53 (half), G-53 (half), F#-53 (half), E-53 (half), D-53 (half), C-53 (half), B-54 (half), A-54 (half), G-54 (half), F#-54 (half), E-54 (half), D-54 (half), C-54 (half), B-55 (half), A-55 (half), G-55 (half), F#-55 (half), E-55 (half), D-55 (half), C-55 (half), B-56 (half), A-56 (half), G-56 (half), F#-56 (half), E-56 (half), D-56 (half), C-56 (half), B-57 (half), A-57 (half), G-57 (half), F#-57 (half), E-57 (half), D-57 (half), C-57 (half), B-58 (half), A-58 (half), G-58 (half), F#-58 (half), E-58 (half), D-58 (half), C-58 (half), B-59 (half), A-59 (half), G-59 (half), F#-59 (half), E-59 (half), D-59 (half), C-59 (half), B-60 (half), A-60 (half), G-60 (half), F#-60 (half), E-60 (half), D-60 (half), C-60 (half), B-61 (half), A-61 (half), G-61 (half), F#-61 (half), E-61 (half), D-61 (half), C-61 (half), B-62 (half), A-62 (half), G-62 (half), F#-62 (half), E-62 (half), D-62 (half), C-62 (half), B-63 (half), A-63 (half), G-63 (half), F#-63 (half), E-63 (half), D-63 (half), C-63 (half), B-64 (half), A-64 (half), G-64 (half), F#-64 (half), E-64 (half), D-64 (half), C-64 (half), B-65 (half), A-65 (half), G-65 (half), F#-65 (half), E-65 (half), D-65 (half), C-65 (half), B-66 (half), A-66 (half), G-66 (half), F#-66 (half), E-66 (half), D-66 (half), C-66 (half), B-67 (half), A-67 (half), G-67 (half), F#-67 (half), E-67 (half), D-67 (half), C-67 (half), B-68 (half), A-68 (half), G-68 (half), F#-68 (half), E-68 (half), D-68 (half), C-68 (half), B-69 (half), A-69 (half), G-69 (half), F#-69 (half), E-69 (half), D-69 (half), C-69 (half), B-70 (half), A-70 (half), G-70 (half), F#-70 (half), E-70 (half), D-70 (half), C-70 (half), B-71 (half), A-71 (half), G-71 (half), F#-71 (half), E-71 (half), D-71 (half), C-71 (half), B-72 (half), A-72 (half), G-72 (half), F#-72 (half), E-72 (half), D-72 (half), C-72 (half), B-73 (half), A-73 (half), G-73 (half), F#-73 (half), E-73 (half), D-73 (half), C-73 (half), B-74 (half), A-74 (half), G-74 (half), F#-74 (half), E-74 (half), D-74 (half), C-74 (half), B-75 (half), A-75 (half), G-75 (half), F#-75 (half), E-75 (half), D-75 (half), C-75 (half), B-76 (half), A-76 (half), G-76 (half), F#-76 (half), E-76 (half), D-76 (half), C-76 (half), B-77 (half), A-77 (half), G-77 (half), F#-77 (half), E-77 (half), D-77 (half), C-77 (half), B-78 (half), A-78 (half), G-78 (half), F#-78 (half

N

284

290

296

O

310

310

317

324

324

331

331