

B \flat Bass

GALOP

from "RASPUTIN" - Ballet Suite

Yevhen STANKOVYCH

Arranged by José SCHYNS

Molto Presto $\bullet = 160$



1

ff

A



12



22



28

sfz



34

sfz

sfz

sfz

B



40



47

ff

C



54

one

ff



61

© MMI - Harmony/RAO

Authorized Edition HAFABRA Music - Louis MARTINUS

84, Village / Dorp - B-3790 - FOURONS/VOEREN (Belgium)

Tel. ++32(0)4.381.23.28 - Fax. ++(0)4.381.23.52

www.hafabramusic.com

All rights reserved
for all countries

D

All



68

*ff**sfz**sfz**sfz*

one



74

*sfz**sfz*

All



80

E

one

All



86

sfz

one

All



92

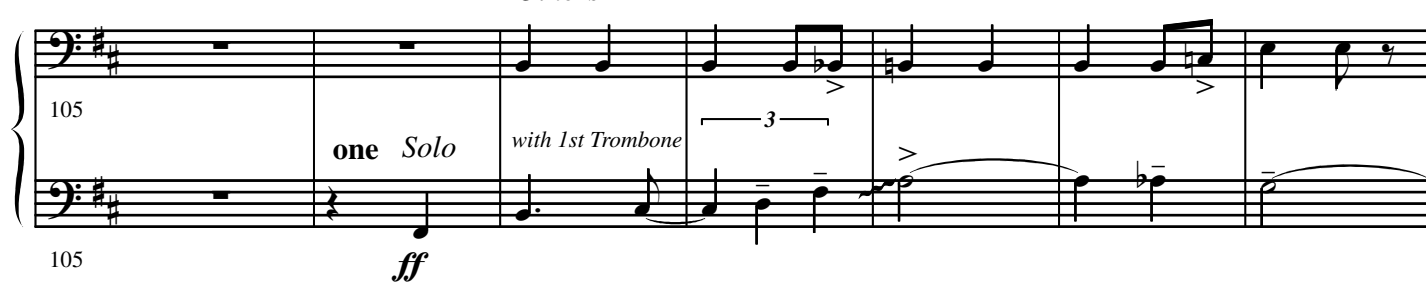
one

F



98

Others



105

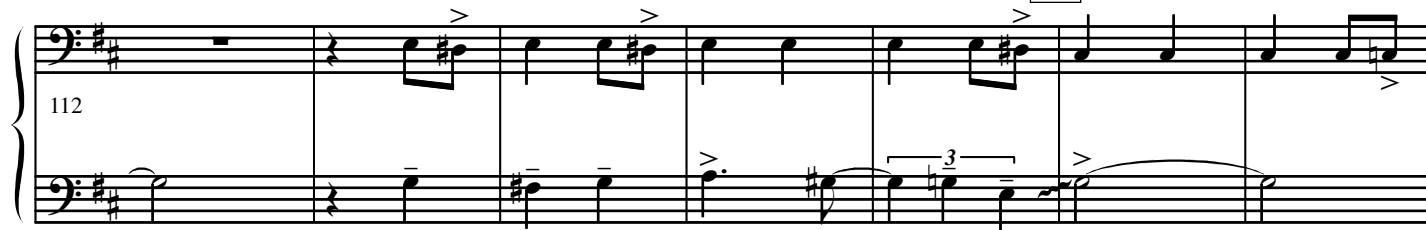
one Solo

with 1st Trombone

3

ff

G



112

112

Measures 119-126. Bass clef, key of B \flat . Measure 119 starts with a treble clef. The music features eighth and sixteenth notes with various articulations like accents and slurs. A triplet of eighth notes is marked in measure 124.

119

Measures 127-136. A box labeled 'H' is above measure 128. The music continues with eighth and sixteenth notes. A triplet of eighth notes is marked in measure 130. A crescendo hairpin is at the end of the system.

127

f

Measures 137-142. The music features eighth notes with slurs. Above measure 137 is the word 'All' with a triplet bracket. Above measure 141 is the word 'one' with a triplet bracket. Above measure 142 is the word 'All' with a triplet bracket. The system ends with a dashed line and the text '8^{vb}-ad lib.'.

137

ff 8^{vb}-ad lib.

8^{vb}-ad lib.

Measures 143-148. The music features eighth notes with slurs. Above measure 146 is the word 'one' with a triplet bracket. Above measure 147 is the word 'All' with a triplet bracket. The system ends with a dashed line and the text '8^{vb}-ad lib.'.

143

(8^{vb})

8^{vb}-ad lib.

Measures 149-156. The music features eighth notes with slurs. Above measure 149 is the word 'one' with a triplet bracket. Above measure 150 is the word 'All' with a triplet bracket. A box labeled 'I' is above measure 154. The system ends with a dashed line and the text '8^{vb}-ad lib.' followed by 'fff'.

149

8^{vb}-ad lib.

fff

Measures 157-165. The music features eighth notes with slurs. A crescendo hairpin is at the end of the system.

157

ff

Measures 166-174. A box labeled 'J' is above measure 168. The music features eighth notes with slurs.

166

Measures 175-182. The music features eighth notes with slurs. The system ends with a dashed line and the text 'mf ff mf ff mf' with hairpins indicating dynamics.

175

mf

ff

mf

ff

mf

Time to turn

4.

- B \flat Bass -

8 K

185 *f*

4

199

L

209

Others

216 *ff* *8^{vb} ad lib.*

M All

223

230 *marc.*



N

245

div.

245

Musical staff for B \flat Bass, measures 245-250. The staff is in B \flat major. The melody consists of eighth and quarter notes, ending with a half note G \flat tied to the next measure. The word "div." is written above the staff.

250

250

Musical staff for B \flat Bass, measures 250-255. The staff is in B \flat major. The melody consists of eighth and quarter notes, ending with a half note G \flat tied to the next measure.

unis.

256

fff

2

2

Musical staff for B \flat Bass, measures 256-263. The staff is in B \flat major. The melody consists of eighth and quarter notes, ending with a half note G \flat tied to the next measure. The word "unis." is written above the staff, and "fff" is written below the staff. The number "2" is written above the staff at measures 258 and 262.

O

264

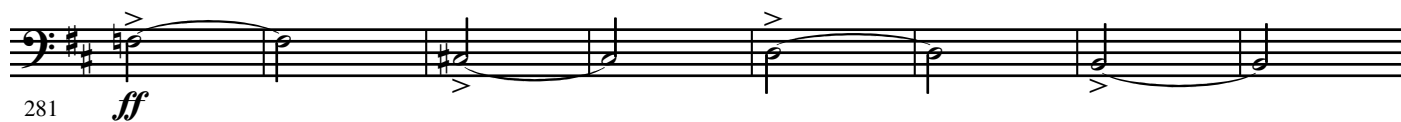
13

Musical staff for B \flat Bass, measures 264-272. The staff is in B \flat major. The melody consists of eighth and quarter notes, ending with a half note G \flat tied to the next measure. The number "13" is written above the staff at measure 272.

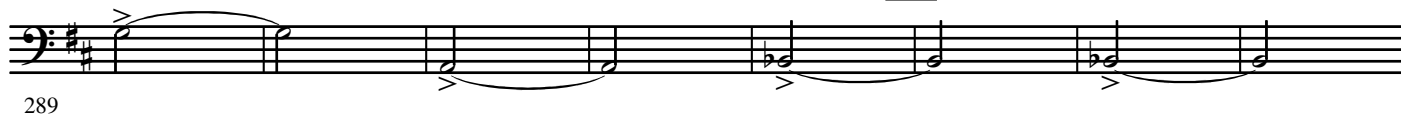
6.

- B \flat Bass -

P



Q



297

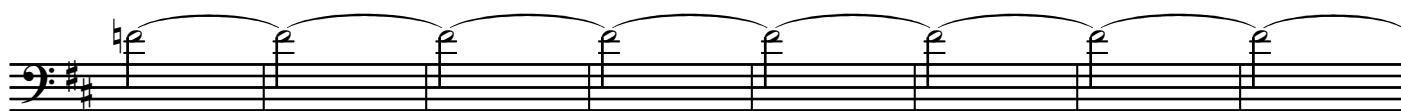


R

cue Organ Stagger breathing

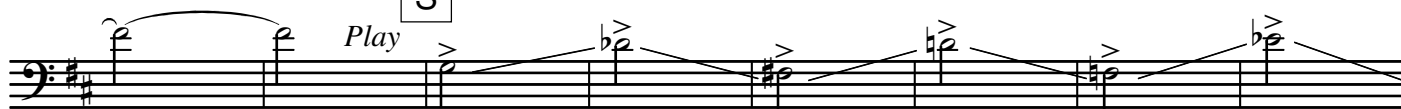


313

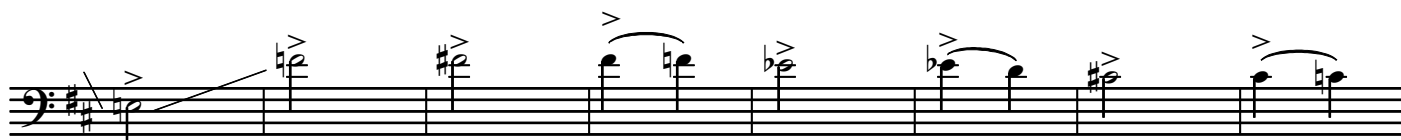


S

Play



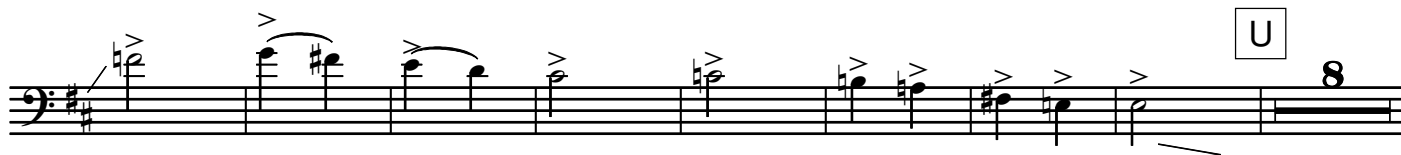
329



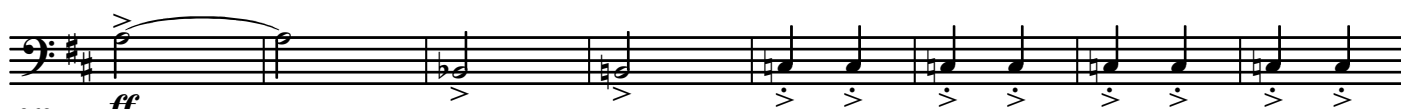
T



346



362



V



W

