

E♭ Bass

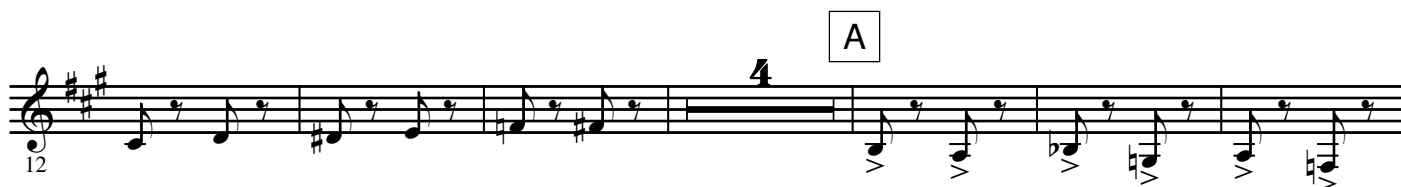
GALOP

from "RASPUTIN" - Ballet Suite

Yevhen STANKOVYCH

Arranged by José SCHYNS

Molto Presto ♩ = 160



© MMI - Harmony/RAO

Authorized Edition HAFABRA Music - Louis MARTINUS

84, Village / Dorp - B-3790 - FOURONS/VOEREN (Belgium)

Tel. ++32(0)4.381.23.28 - Fax. ++(0)4.381.23.52

www.hafabramusic.com

All rights reserved
for all countries

Sheet music for E♭ Bass, measures 68 to 138. The key signature is D major (two sharps). The music is divided into sections labeled D, E, F, G, and H.

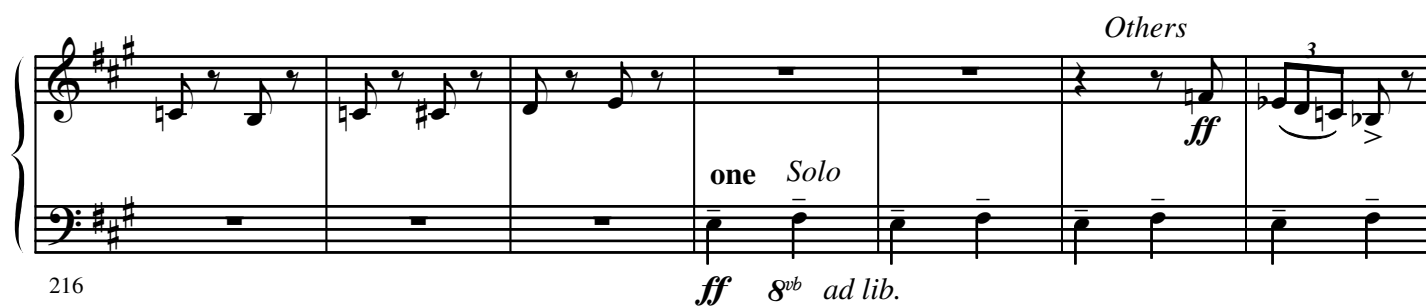
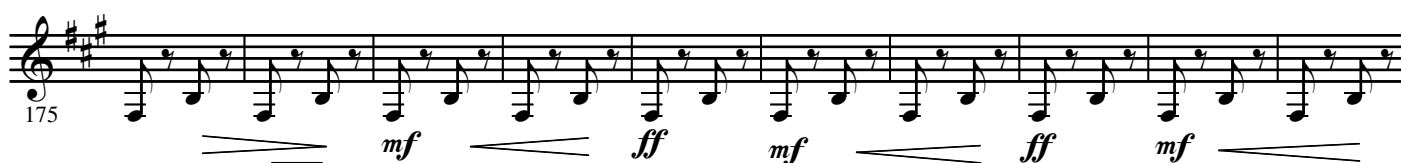
Section D (Measures 68-73): Starts with a **ff** dynamic. Features a series of eighth notes with accents and **sfz** (sforzando) markings.

Section E (Measures 74-85): Continues the eighth-note pattern with accents and **sfz** markings.

Section F (Measures 86-98): Includes a **4** (quadruple) measure at measure 92.

Section G (Measures 99-118): Continues the eighth-note pattern with accents.

Section H (Measures 119-138): Features a **2** (half note) measure at measure 127, followed by a **5** (half note) measure at measure 130, and a **3** (triple) measure at measure 133. The section concludes with a **ff** dynamic.



M All



223



230

marc.

238

N



245



251

fff

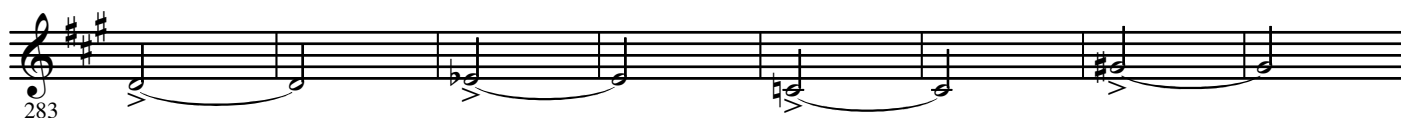
257

O



265

P

ff

283

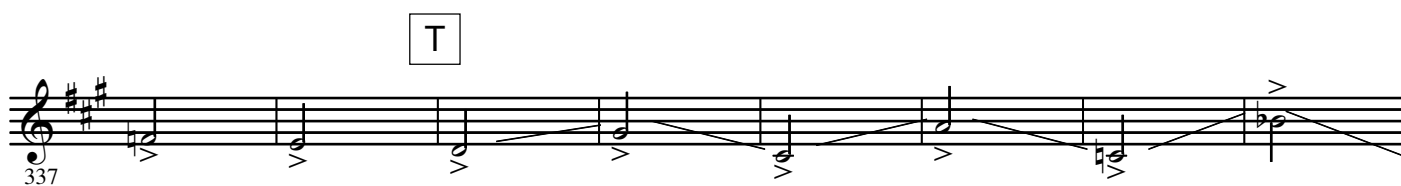
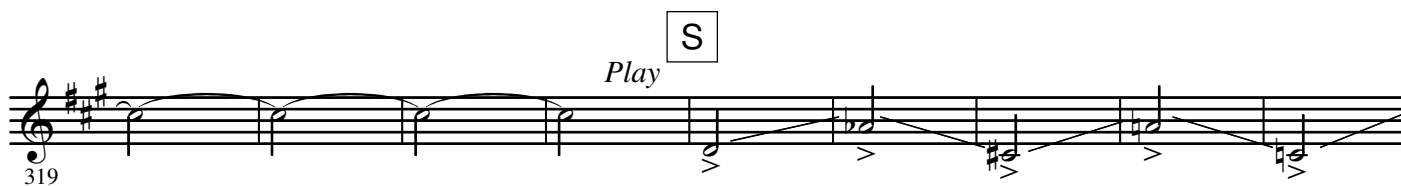
Q



291



R cue Organ Stagger breathing



6.

- E_b Bass -

W

379

385

391

397

The image shows a musical score for 'The Rose Tree' in G major, measures 379-397. The score is written on four staves, each with a treble clef and a key signature of one sharp (F#). The first staff (measures 379-384) features a melody of eighth notes and a bass line of eighth notes. The second staff (measures 385-390) continues the melody and bass line. The third staff (measures 391-396) continues the melody and bass line. The fourth staff (measures 397-402) concludes the melody and bass line. The melody is written in a treble clef, and the bass line is written in a bass clef. The key signature is one sharp (F#). The time signature is 4/4. The score is written in a standard musical notation style.