

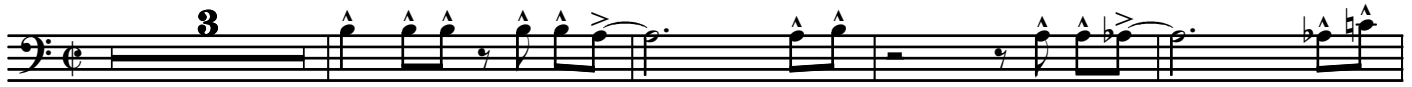
# JAZZICA

4th B $\flat$  Trombone  $\text{B}\flat$

- Wind Band -

Hardy MERTENS

Fast swing  $\text{♩} = \pm 120$



1

*ff*



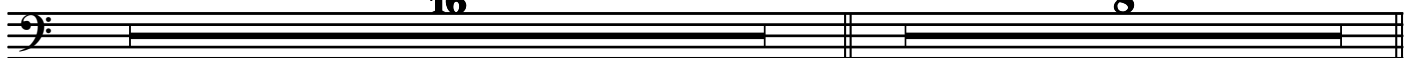
8

A

16

B

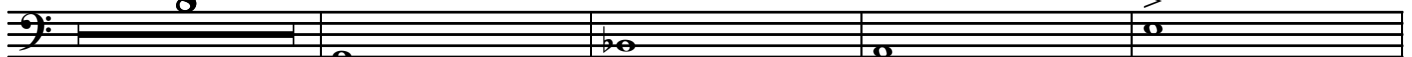
8



13

C

8



37

*p*

D



49

*f*

*ff*

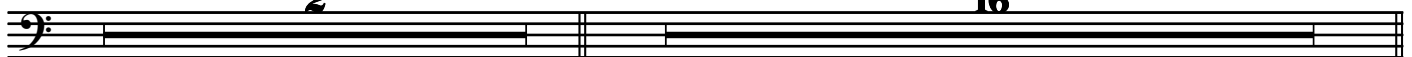


54

E

2

16



59

F

3

3

3



77

*ff*

G

SHOUT



82

BIL - LIE

87 EL - LA WATCH OUT FOR JES - SI - CA!

Measures 87-91: Bass clef staff. Measure 87: whole rest. Measure 88: quarter note G2, quarter rest. Measure 89: whole rest. Measure 90: quarter note G2, quarter note F2, quarter rest. Measure 91: eighth notes G2, F2, E2, marked with a triplet bracket.

92 *ff*

Measures 92-96: Bass clef staff. Measure 92: eighth notes G2, F2, E2, marked with an accent (^). Measure 93: eighth notes D2, C2, B1, marked with an accent (^). Measure 94: eighth notes A1, G2, F2, marked with an accent (^). Measure 95: eighth notes E2, D2, C2, marked with an accent (^). Measure 96: eighth notes B1, A1, G2, marked with an accent (^).

97

Measures 97-101: Bass clef staff. Measure 97: eighth notes G2, F2, E2, marked with an accent (^). Measure 98: eighth notes D2, C2, B1, marked with an accent (^). Measure 99: eighth notes A1, G2, F2, marked with an accent (^). Measure 100: eighth notes E2, D2, C2, marked with an accent (^). Measure 101: eighth notes B1, A1, G2, marked with an accent (^).

101

Measures 102-106: Bass clef staff. Measure 102: whole rest, marked with a box 'I' and '16'. Measure 103: whole rest, marked with a box 'J' and '8'. Measure 104: whole rest, marked with a box 'K' and '8'. Measure 105: whole rest. Measure 106: whole rest.

133 *p*

Measures 133-138: Bass clef staff. Measure 133: half note G2, marked with an accent (^). Measure 134: half note F2, marked with an accent (^). Measure 135: half note E2, marked with an accent (^). Measure 136: half note D2, marked with an accent (^). Measure 137: half note C2, marked with an accent (^). Measure 138: half note B1, marked with an accent (^).

139 *f*

Measures 139-143: Bass clef staff. Measure 139: eighth notes G2, F2, E2, marked with an accent (^). Measure 140: eighth notes D2, C2, B1, marked with an accent (^). Measure 141: eighth notes A1, G2, F2, marked with an accent (^). Measure 142: eighth notes E2, D2, C2, marked with an accent (^). Measure 143: eighth notes B1, A1, G2, marked with an accent (^).

144 *ff*

Measures 144-148: Bass clef staff. Measure 144: eighth notes G2, F2, E2, marked with an accent (^). Measure 145: eighth notes D2, C2, B1, marked with an accent (^). Measure 146: eighth notes A1, G2, F2, marked with an accent (^). Measure 147: eighth notes E2, D2, C2, marked with an accent (^). Measure 148: eighth notes B1, A1, G2, marked with an accent (^).