

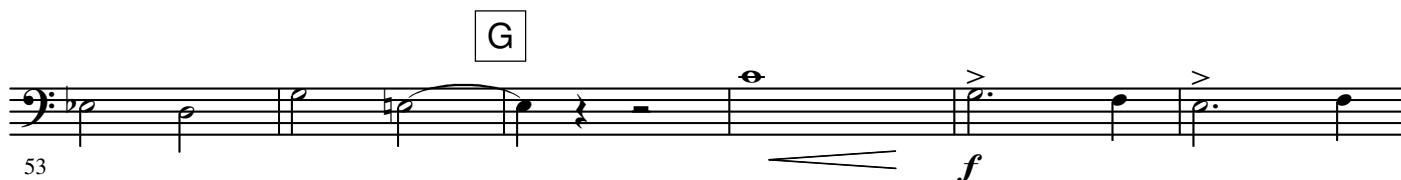
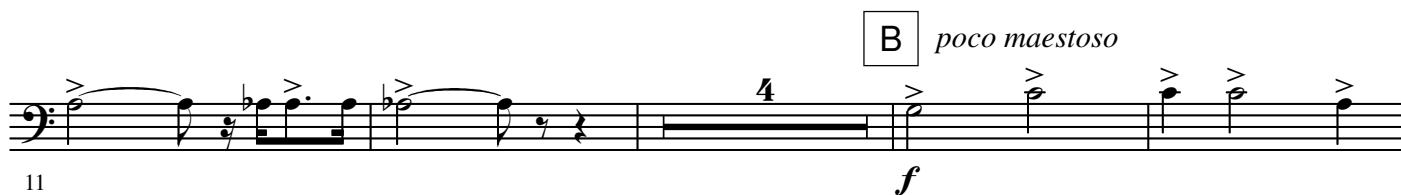
Welcome the Queen

2nd B \flat Trombone

Arthur BLISS

Arr. Yo KITANO

Moderato ma con brio $\text{♩} = 84$



H

64 *ff*

I

70 3

J L'istesso tempo **K** Tempo Andante (in 4) ♩ = 108

76 6 2 8 *rall.*

L **M**

92 9 3 *f*

N

106

O Moderato ma con brio ♩ = 84

112 3 *f* *rit.*

P

118 3 *f*

Q poco maestoso

123 3 4 *f*

R

128 4 *f*

S

137 2 *f*

144 *mf* *f* S

150

156 T 8 U 3 *mf*

171 V *f*

177 W

183 *ff*

189 X *rall. molto* - - - *al*

198 *mf* Y *Andante maestoso* (♩ = 96) *ff*

203 Z

209

AA **Con brio** (*in 2*) $\text{♩} = 84$

rall.

214

BB

219

Largo

224 **ff** *rall.*