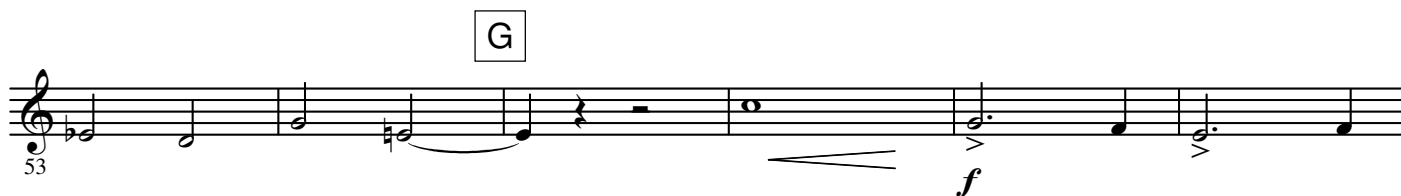
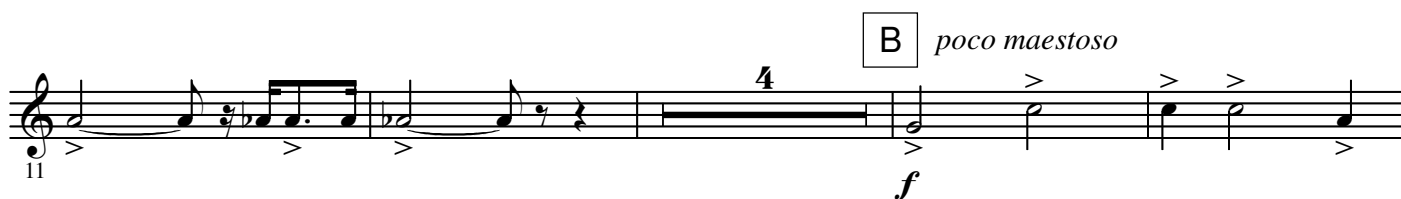


2nd B \flat Trombone

Welcome the Queen

Arthur BLISS

Arr. Yo KITANO

Moderato ma con brio $\text{♩} = 84$ 

H

64 *ff*

I

70

J L'istesso tempo

K Tempo Andante (in 4) ♩ = 108

76 6 2 8 *rall.*

L

92 *f*

M

N

106

O Moderato ma con brio ♩ = 84

112 *fz rit.*

P

118 *f*

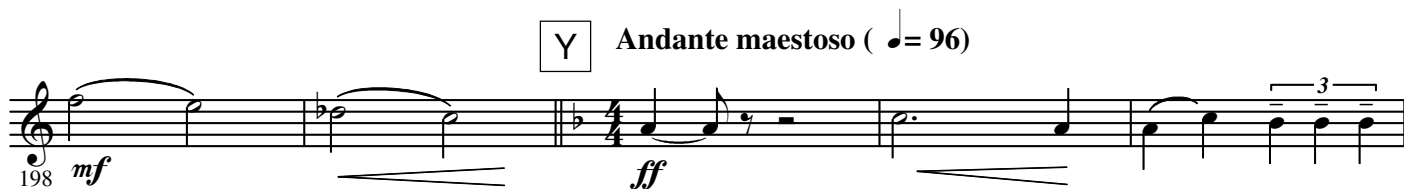
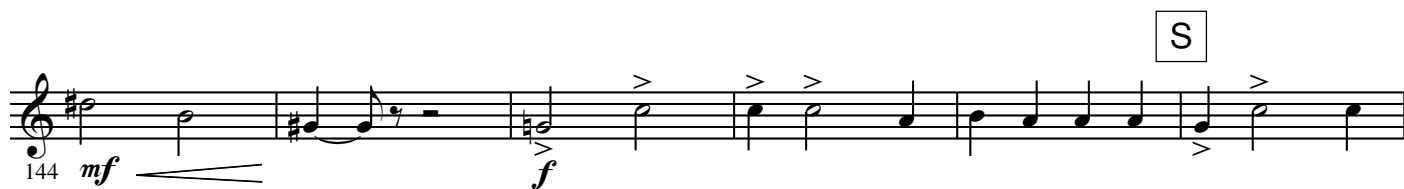
Q poco maestoso

123 3 4 *f*

R

128 2

137



AA **Con brio** (in 2) $\text{♩} = 84$

rall.

214

BB

219

Largo

224

ff *rall.*