

Welcome the Queen

E♭ Bass 9

Arthur BLISS

Arr. Yo KITANO

Moderato ma con brio ♩ = 84

1 *ff* 3 3 3

7 **A**

12 *f*

17 **B** *poco maestoso* *f*

23 **C** *mf* *f*

29 **D**

35 **E**

41

47 **F**

53 **G** *f* one

© 1954 Chapell Music Ltd., London W6 8BS

Reproduced by permission of International Music Publications Ltd.

Authorized Edition: HAFABRA Music - Louis MARTINUS

84, Village / Dorp B- 3790 FOURONS / VOEREN (Belgium)

Tel. ++32(0)4.381.23.28 - Fax. ++32(0)4.381.23.52

www.hafabramusic.com

All rights reserved
for all countries

59

H

66

All *ff*

72

I J L'istesso tempo

mf

78

one

rall.

84

K Tempo Andante (in 4) ♩ = 108

All *mp*

90

L

mf

96

mp

101

M

f

107

N

113

fz rit.

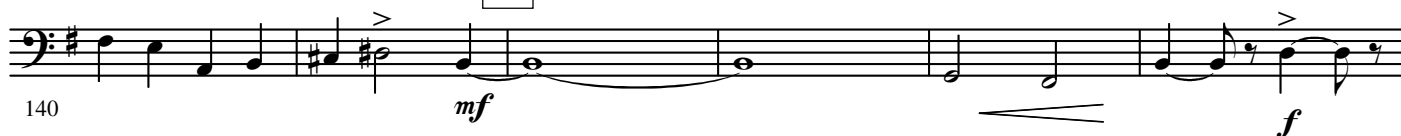
O Moderato ma con brio ♩ = 84



Q poco maestoso



R



S



T



U



V

one



176

W

183 *ff*

All

189

X

194

rall. molto - - - al

200 *ff*

Y Andante maestoso (♩ = 96)

206

Z

211

rall.

216

AA Con brio (in 2) ♩ = 84

221

BB

Largo

fz *ff* *rall.*